

The Kibbitzer

Congregation Beth Shalom

706 Bryan Road, Brandon, FL 33511

Phone (813) 681-6547

www.BethShalom-Brandon.org

July 2021
Volume 32, Issue 2

Cantorial Soloist

Sandy Santucci 813-681-6547

Executive Board:

President

Steve Billor 813-267-6585

Past President

Gerry Pliner 856-816-2178

1st VP

Gerry Pliner 856-816-2178

2nd VP

Toby Koch 813-654-0877

3rd VP

Sheryl Finke 813-380-3880

Treasurer

Suzie Baylis 808-561-8130

Secretary

David Friedman

Members at Large

Mitch Baylis 808-561-8130

Allan Weber 267-885-4806

Lynn Kaler 813-494-5163

Gabriel Lifschitz 571-277-1416

open

GUEST COLUMN - Steve Feldman

A Fond Farewell . . .

The June issue of *The Kibbitzer* was full of the usual helpful information and timely messages from our congregation's leaders, but there was one thing that was missing from its pages. Can you guess what it was?

For the past year we have been blessed with a marvelous rabbi who took us under his wing and showed us how uplifting, how sincere and how knowledgeable a great rabbi can be. And what did we do in return? We attended services, mostly online, we participated in his numerous and informative adult learning sessions, we celebrated with him all the many Jewish holidays, we baked matzah together, and after each of those cherished occasions and so many more, we thanked him. He thanked us for participating and we thanked him, individually, for leading us in such a diversity of happenings online and more recently at our temple.

But what we have not yet done as one entire congregation is to cordially and formally thank Reb Tuviah so much for all he has done during his all-too-brief tenure with us, and that is what I wanted to address in this column. Reb Tuviah has been a tremendous leader, teacher and facilitator who has inspired us to better understand ourselves and our Jewish religion and heritage perhaps better than anyone could have done in the course of the past year.

His tremendous enthusiasm and appreciation of Judaism and what it can do for each of us was truly inspirational as well as amazingly spiritual. We have been truly blessed to have been in the company of someone very special, who has shown us the way to improve ourselves and our temple community and to help us fulfill the ultimate mission of Judaism, Tikkun Olam.

On behalf of the entire family of Congregation Beth Shalom, may I take this opportunity to thank you, Reb Tuviah, for devoting an entire year to the betterment of our temple, for getting to know and love each of us and for helping us to grow in our faith and devotion to Judaism. You have helped us dearly during a period of great need and together, we cannot express enough appreciation for what you have done for each of us.

We wish every happiness that G-d can bestow on you for your extraordinary efforts to help us become better human beings and we applaud your heartfelt efforts to help in creating a more welcoming, caring, inclusive temple in which we can truly "be kind to one another." In your honor, let us all make a solemn pledge to continue working diligently on that endeavor.

Shalom!

Please see page 5
for a message
from our new
spiritual leader,
Rabbi Robert
Lefkowitz.

We are now OPEN for Friday night services. Events will also be live-streamed. Please check the eBlast for the latest information and details.

FROM THE PRESIDENT - Steve Billor

Shalom Everybody,

So, this month is a personal story that I am hoping people can relate to.

I brought my mother-in-law to the hospital on Memorial Day weekend for symptoms of a stroke. After testing, they found a tumor on her brain. She was immediately transferred to the Main Hospital and more tests were done. By Wednesday morning they were attempting to remove the mass. Long story short, it was stage 4 aggressive brain cancer.

She is the sweetest lady you could ever meet and the youngest 77 you will ever meet as well. She is my favorite mother-in-law (my only one as well). Then I find out my mother has a re-occurring cancer of the throat and they cannot operate on her again (She could not tolerate another surgery at 94). These two things happened within weeks of each other and without any notice.

What is my point of sharing these personal stories with the congregation? I have been in public service either in the military or law enforcement my entire adult life and I want to always help people whenever I can. So, my point is to remind everybody how fragile life is and to not waste it with negative and hateful thoughts. Live life to your fullest and without having to say at the end, I wish I would have done more. Take care of yourselves, your friends and most importantly, your family (In my opinion, your congregation is your extended family). We only have one shot at getting this right, don't procrastinate on things, make right your life and spiritual life as well.

I am writing this article quickly, as I have a lot on my plate

right now (and today is the "deadline" to get my article into *The Kibbitzer*.) I say this as I chuckle, with a smile on my face.

Let us take care of ourselves and everybody close to us and treat people with the respect that you would like. I once heard an expression; "you come into this world with only your name and, you only leave this world with your name and the reputation and love that goes along with it."

Thank you for your time.



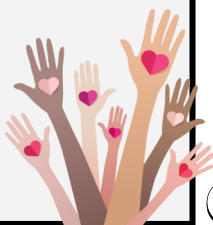
CARING COMMITTEE — Judith Pliner

Hi CBS members,

I am the new chair of the Caring community. If you are interested in joining our committee, we would love to have you. If you know of a member who is ill, hospitalized, in need of help, or just some cheering up, please contact me by email at bunnies94@aol.com or phone at 856-816-2174.

We will do our best to fulfill your expectations. Tikkun Olam begins right here at Congregation Beth Shalom with people helping people.

Judith Pliner
Caring Committee Chair



Congregation Beth Shalom provides a meaningful spiritual home for people of all ages and levels of knowledge, a place to learn and to question, a place to worship and to celebrate, and a place to find a community that cares.

We offer:

- ✧ **Friday worship services at 7:30 p.m.**
- ✧ **Religious school pre-k through 10th grade**
- ✧ **Complete B'nai Mitzvah preparation**
- ✧ **Youth group programming**
- ✧ **Adult Education classes**
- ✧ **Community-wide events, including Mitzvah Day**

Upcoming Dates To Remember

• **Saturday, July 3, 10 a.m.:** The Bat Mitzvah of Judy Lubin.

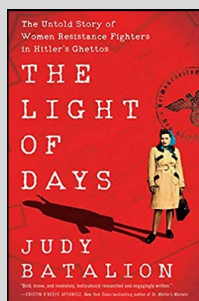
• **Monday, July 19, at 7 p.m.:** Page Turners. More information on page 5.

• **Wednesday, July 21, 6:30 p.m.:** Ladies Night Out. More information on page 8.

• **Saturday, July 24, 7:30 p.m.:** Dinner With The Tribe at The Vineyards Trattoria and Pizzeria. Details on page 4.



• **Sunday, Aug. 8, 11 a.m.:** Congregation open house. More information on page 6.



*Religious Education Calendar, page 9;
Full calendar, page 15*

MEMBERSHIP

The membership committee is delighted to welcome our new spiritual leader Rabbi Robert Lefkowitz.

We are excited to open our congregation family to this new opportunity for growth. Please keep an eye out for the date of our prospective member dinner in July.

– Sandee Pelk & Lea Garbett

Important Note

Our former congregation email account was compromised.

Please make a note that our new email is cbs-brandon@outlook.com. Don't forget to add us to your contacts so you do not miss any important information and updates.



July Oneg Schedule

There can be no joy without food and drink. — Talmud, Mo'ed Katan

We hope you and your family are doing well.

The Oneg Committee has not scheduled oneg hosts for the month of July.

Due to COVID-19 precautions, our in person services will only have challah and wine and juice, which will be provided by the congregation.

If you have any questions or are interested in hosting a future oneg, please contact at Judith 856-816-2174.

Judith Pliner

The Kibbitzer

Volume 32, Issue 2
Published Monthly by
Congregation Beth Shalom
706 Bryan Road
Brandon, FL 33511
Phone 813-681-6547
Email: CBS-brandon@outlook.com

Email and articles for publication:
TheKibbitzer@hotmail.com
For current news and events
see the congregation's website:
<http://www.bethshalom-brandon.org>

Congregation Contacts

813-681-6547 • CBS-brandon@outlook.com

Office hours:

By appointment.
Voicemails and emails will be monitored daily.
Office is closed on holidays

Weekly Email Blast submissions

bethshalominfo@gmail.com
eBlast deadline is Wednesday at 4 p.m.

A Special Thank You

The expression is “time is money,” has never been more appropriate as our congregation thanks both Gerry Pliner and Alan Weber for their time. When Alan was our treasurer, he set in motion the application to refinance our mortgage. This required a lot of time and effort going back and forth with the banks, phone calls and meetings. Gerry, as acting president, tirelessly went through the painstaking task of collecting signatures, reviewing and rewriting the mortgage agreement to our benefit. Congregation Beth Shalom was able to refinance the mortgage on excellent terms and was provided much needed revenue. Our entire congregation family applauds your efforts and thanks you for your devotion to CBS.



DINNER WITH THE TRIBE — Anita Clifford

Come enjoy some authentic Italian cuisine with Dinner With The Tribe. We are limited to 18 people so you must reserve your spot. To R.S.V.P. email Anita Clifford at niewdnarb@yahoo.com.

Saturday, July 24, 7:30 p.m.

The Vineyards Trattoria and Pizzeria
250 Apollo Beach Blvd., Apollo Beach

Anita Clifford
niewdnarb@yahoo.com
813-545-8769 (cell)



Committees/Chairpersons

Building/Capital Fund
open

Caring
Judith Pliner

Finance*
Gerald Pliner

Fundraising*
Mitch & Suzie Baylis

Life Long Learning*
open

Strategic Planning*
Steve Feldman

Membership*
Sandee Pelk, Lea Garbett

Retention
Judith Pliner

Oneg
Judith Pliner

Publicity
Toby Koch

Ritual*
open

Facility and Safety
Marvin Shienbaum, Gabe Lifschitz

Social Action*
Judith Pliner

Religious School*
open

BESTY—Youth Group*
open

* Ex-officio voting board member
(each committee only gets one vote)

Other Programs

CBS Singles Over 50
Anita Clifford

Chavurah
Anita Clifford

Dinner With the Tribe
Anita Clifford

Interfaith/Outreach
open

Kibbitzer Editor
Lea Garbett

Kolot Shalom — Choir
open

Library
Sandy Saviet

Men's Club
Seth Dugan

Page Turners
Anita Clifford

Web Administrator
Toby Koch



Got something to sell?

What's better than a garage sale?
A CLASSIFIED AD IN THE KIBBITZER!

A 5-line add is just \$9 for members or \$18 for non-members.

Your ad for selling household items benefits CBS and reaches hundreds of current and former members!
Please send your ad to: thekibbitzer@hotmail.com



and pay on our website:
www.bethshalom-brandon.org
Thank you!



FROM THE RABBI — Rabbi Robert Lefkowitz

Dear Congregants,

People are now realizing how important synagogues are in our lives. There is a craving for connection and community. We need to study together and share a great deal of laughter and tears. It will be my mission to enrich our Jewish Lives as well as the life of Congregation Beth Shalom. My challenge will be to impart to you the joys of Jewish tradition. Judaism is the fabric of our being. Being Jewish is not just doing the rituals and reciting the words but acting Jewishly and incorporating Judaism into our daily lives.



I hope to be open and attentive to all congregants, and to encourage you as you respond Jewishly to all of life's challenges. Let us all be motivated and soar beyond the words on a page in the prayer book, to enhance meaning into our melodies, and to unlock secrets found in the Torah.

What we all need from you is your presence, to find what the Israelites experienced at Sinai - that ecstasy which is the sure knowledge that we all have.

I welcome all of you with open arms. Chazak, Chazak v'nitchazek-from strength to strength, we are all strengthened.

Rabbi Robert Lefkowitz

Kudos & Mazels

Join with CBS in offering congratulations and recognition to the following members on their accomplishments:

KUDOS

- Kudos to the **rabbi search committee (Rachel Duncan, Toby Koch, and Mitch Baylis)** for doing a fantastic job on selecting our new rabbi, Robert Lefkowitz.
- Kudos to **Reb Tuviah** for his enjoyable and enlighten adult educational classes and his service to our congregation for the past year.

MAZELS

- Mazel tov to **Rabbi Robert Lefkowitz** for being our new spiritual leader.



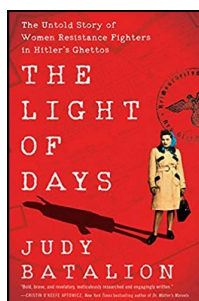
*Do you know a CBS member who should be congratulated for a special accomplishment?
If so, email the name and accomplishment to cbs-admin@hotmail.com.*

PAGE TURNERS

Join us Monday, July 19, at 7 p.m., as Page Turners discusses *The Light of Days*, by Judy Batalion.

We invite those who are intrigued by the contributions of Jewish women who were Resistant Fighters during the Holocaust to join us for our next meeting.

While little is known about these Jewish women's brave involvement as resistance fighters against the Nazis, Judy Batalion, author of *The Light of Days*, has done an amazing job retelling some of their harrowing experiences. At last, the true story of these little-known feats that have been eclipsed over time are finally being published for the public to read. Ba-



talion, a granddaughter of Polish Holocaust Survivors, takes the reader back to 1939 and introduces us to Renia Kukielka, a weapons smuggler and messenger who risked her life traveling across occupied Poland on foot and by train

Along with Renia there are other women who served as couriers, armed fighters, intelligence agents and saboteurs, all of whom endangered their lives to carry out their missions. Batalion follows these brave women through the savage destruction of the ghettos, arrests and internment in the Gestapo prisons, and concentration camps.

For the fortunate few women, such as Renia, who managed to orchestrate her own escape from a brutal Nazi jail, we now have their astonishing and remarkable stories thanks to Judy Batalion!

OPEN HOUSE

You are invited to the Congregation Beth Shalom Open House on Sunday, Aug. 8, from 11 a.m. until 2 p.m. Let your family get to know our family and make some new friends. We have lots in store – complimentary lunch, music, games and our new rabbi is eager to meet you.

This will also be a wonderful opportunity to acquaint yourself with our dynamic and varied educational and spiritual programming designed to address the wants and needs of the wide demographic that is representative of our family.

And, is our custom, this will be the time to learn about the religious school. Our religious school classes are designed to meet the educational needs of children kindergarten through Confirmation. We are continuing our cutting-edge religious school curriculum which has been specifically developed for Congregation Beth Shalom. During the open house, you will have an opportunity to preview the curriculum, review the text books, meet this year's teachers, and enroll your child(ren) in classes.

We are continuing with a once-a-week program beginning with Sunday, Aug. 15. For grades 2 through 7, school hours continue to be 9:30 a.m. until noon, but our day begins with our worship service at 9:30 a.m. The service is followed by a 1-hour Hebrew class and 1-hour Judaica class. For kindergarten and 1st grade, school commences Aug. 15, as well, and children will be meeting for 18 sessions during the school year. A calendar of classes will be available at the open house.

For those interested in just the religious school, our **Chai Program** allows your children under the age of five, the full religious school experience without becoming a partner in the congregation.

For Chai Program, the fee is \$325. Sign up at the open house and receive \$25 off your paid in full enrollment.

"L'Dor Vador" is a very successful program that has helped many of our families. Specifically designed for students age 11 - 16 who have not been Bar or Bat Mitzvah. It is our goal to pass on our traditions from generation to generation. This will be a special 2-year program culminating with the B'Nai Mitzvah. These students will be meeting during regular religious school hours. With the final 9 months of the program, the students will also attend private tutoring to specifically prepare for their B'Nai Mitzvah. Attendance in this program requires the family become a partner at Congregation Beth Shalom. The cost of this program is \$325 annually. There will also be a B'Nai Mitzvah fee prior to beginning the tutoring program. We believe every child should be afforded the Jewish experience despite any circumstances.

Our goal is to give every child, every opportunity. We can try and accommodate those parents who are in difficult situations. Our treasurer will be on hand to assist in any financial situations to ensure your children get every opportunity of a solid Jewish foundation.

CONGREGATION WISH LIST

Financially supporting the synagogue is the responsibility of the entire Jewish community so that it can continue to exist and grow for everyone, both now and in the future.

Items are often "wished" for to add to our spiritual home. Below are a few of our most frequently requested items that, while not deemed necessary, would certainly enhance our environment:

While monetary donations are welcomed, encouraged, and needed and can be used where the temple needs it most, we know sometimes people prefer



concrete gifts and look for opportunities to provide in other ways. We hope this list is helpful. Before making an in-kind contribution, due to limited storage space, please contact the temple first to be sure the item is still on the list.

Interior wish list:

- Large print copies of Mishkan HaNefesh
- Two 4-foot tall bookcases for classrooms
- 60 wine glasses and water glasses (plain not decorative)
- 8 white large round table cloths
- 3 large round tables (to replace the broken ones)
- 10 deadbolt door locks
- School supplies and crafts

Exterior wish list:

- 40 bags of red mulch
- Pavers for the path to the fire pit
- Awnings for office entrance

A Note About Pastoral Care

Please let us know when a congregant is in need of pastoral care.

This includes but is not limited to: when our congregants or their family members are in the hospital, recently lost a loved one, or otherwise may need his support.

If you hear about a congregant in need, please contact the temple office at 813-681-6547,



SOCIAL ACTION — Judith Pliner

Our community food pantry is open for all in need. If you or someone you know needs help, please contact Judith Pliner at gp@pliner-inc.com or Suzie Baylis at all4suzie@gmail.com.



We are currently seeking donations of the following for our pantry:

- bar soap
- body wash
- laundry detergent
- feminine hygiene products
- kid's cereals
- spaghetti sauce
- toilet paper

If you would like to donate any of these items, please contact us. Thank you.

The Social Action Committee



Your 100% Satisfaction is Absolutely Guaranteed!

Clarke Automotive Systems

If you have a problem with your car, let us give you our honest, expert & straightforward advice so the job is done right—the first time!

Bob Clarke
(813) 685-2939

131 Central Ave
Brandon, FL 33510



BEN FERNANDES & KEITH BALOT
OWNERS

phone: 813.657.6200
fax: 813.413.2045
Keith@krkvalrico.com

4321 Lynx Paw Trail
Valrico, FL 33596
Ben@krkvalrico.com

www.krkvalrico.com

Doogie Entertainment

DJ and Party Services

Weddings
Bar/Bat Mitzvahs
Children's parties
80's & 90's video parties
Office Parties
PA system rental/set-up



Phone: 813-400-3609
www.DoogieEntertainment.com
E-mail: Doogie@DoogieEntertainment.com

Pleased to offer a 10% discount on services to members of Congregation Beth Shalom

Roman Glass
ART & JEWELRY



Rachel Arbel
Tel. +972-4-6261114 | Cel. +972-544-592383
www.rachelarbel.com
cromanglass@gmail.com

LIFELONG LEARNING



We are now looking for a volunteer to become chairperson of Lifelong Learning. The Lifelong Learning committee is a creative group of dedicated individuals. Some of the programs they arrange are educational, some are just fun. The committee exists to get the members of Congregation Beth Shalom engaged and involved.

If you are interested in becoming chairperson or even becoming a committee member, please contact Toby Koch at tobykoch@hotmail.com.

Ladies Night OUT!!!



Finally let's have a casual dinner, snack and/or maybe even a drink!

Wednesday, July 21, 6:30 p.m.

Fuzzy's Taco Shop
2874 Providence Lakes Blvd., Brandon

Please R.S.V.P. by Friday, July 16 at noon so we can reserve our seating.

superrachel@att.net

469-774-8961

*Improving the health
of women every day.*

Our Doctors:

Stephen Zweibach, MD
Natasha Champion, MD
Mariel Rotundo-Patino, DO

Our Services:

- Gynecology & Obstetrics
- Bladder Problems
- Bleeding & Pain Problems
- Weight Management
- Botox

Now Accepting:
Tricare Members



Women's Care Florida offers obstetrics and gynecologic care for women through all phases of life, from your pre-teen years to post-menopausal years.
Call today to schedule an appointment!



515 S. Kings Ave., Suite 1300 • Brandon, FL
13148 Vail Ridge Dr., • Riverview, FL

813.571.2777 *Se Habla Espanol*

Important Note

Our former congregation email account was compromised. Please make a note that our new email is cbs-brandon@outlook.com. Don't forget to add us to your contacts so you do not miss any important information.



EDUCATION

Bar/Bat Mitzvah Information

TUTORING: Bar/Bat Mitzvah tutoring is available. Contact the temple office at 813-681-6547.

ANNOUNCEMENTS: If you would like to have information on your child's upcoming Bar or Bat Mitzvah listed in *The Kibbitzer*, please submit an article and picture (digital if possible) to thekibbitzer@hotmail.com by the second Friday of the month prior to your service.



CBS Seeking person for the following position
RELIGIOUS SCHOOL ADMINISTRATIVE DIRECTOR
 2021 – 2022 school year

- Teaching experience **Preferred**
- Volunteer position – A Mitzvah!
- Open to all CBS membership
- Requires in-person attendance during Sunday school year
- CBS member receives 30% discount on dues

Please direct inquiries to Toby Koch:
 (813) 407-2774 tobykoch@hotmail.com

Are You Supporting our Commercial Advertisers?

We urge all of our readers to patronize our commercial advertisers and, when you see them, to thank them! Their advertising dollars help support our many programs at CBS!



CBS ON FACEBOOK



- Congregation Beth Shalom
- Congregation Beth Shalom of Brandon Religious School Parent Association
- BESTY & BESTY Jr. Parents
- Congregation Beth Shalom of Brandon

Jewish? Need College \$?

Tip JELF provides interest-free, last dollar loans for higher ed.

Apply MAR 1 THROUGH APR 30 | SEPT 1 THROUGH SEPT 30

LEARN MORE AT JELF.ORG

Help us help you!

Thank You

If you are reading *The Kibbitzer* now and look forward to receiving it monthly, you have Lea Garbett to thank. Each month she makes sure that Congregation Beth Shalom members, friends and extended family know what is happening at our temple. For more than 6 years Lea has been the editor in chief. At one point we had to pay someone to edit *The Kibbitzer*. Not so with Lea. She spent time editing the newsletter on a voluntary basis. All Lea asked for was for from the contributors was to get the information to her by the due date and to be respectful. It is not easy to fit everything into the pages and make the layout look eye catching. There are 9 years of *Kibbitzers* available at our website. If you look through them, you will notice that the quality of it has improved over the years. That is because of Lea's diligence and talents.

In 2021 Lea was honored at the Women of Distinction awards. She was chosen to represent CBS, for all she has done for us over the years. This July Issue will be Lea's last issue. You will continue to receive the *Kibbitzer*. There will be a new editor in chief.

Lea, thank you for your hard work. We appreciate everything you did for us.



FOLLOW US ON TWITTER
@CBSBrandon

FOLLOW US ON INSTAGRAM
@cbsbrandon



CBS ON FACEBOOK

- Congregation Beth Shalom
- Congregation Beth Shalom of Brandon
- Religious School Parent Association
- BESTY & BESTY Jr. Parents
- Congregation Beth Shalom of Brandon

Congregation Beth Shalom - Donation Form

At times of sorrow & memory, as well as at times of joy, tradition teaches us that we honor others by giving of tzedakah. Please return your completed donation form to the temple office.

In Memory of _____

In Honor of _____

Donor's Name: _____

Address: _____

\$18_____ \$36_____ \$54_____ \$180_____ Other _____

Designated Fund:

- | | |
|---|--|
| <input type="checkbox"/> General Fund | <input type="checkbox"/> Youth Group Fund |
| <input type="checkbox"/> Endowment Fund | <input type="checkbox"/> Rabbi's Discretionary Fund |
| <input type="checkbox"/> Building Fund | <input type="checkbox"/> Religious School Scholarship Fund |

- ☐ My check is enclosed
☐ Please bill me

"Tzedakah weighs as much as all the other commandments combined" - Talmud

Congregation Beth Shalom 706 Bryan Rd. Brandon, FL 33511 813-681-6547

THANK YOU TO OUR HIGH HOLY DAYS BRIDGE BUILDERS 5781

BONIM BRIDGE ☆ \$3,600—\$7,500

- (1) Anonymous
- (2) Anonymous
- (3) Anonymous

MITZVAH BRIDGE ☆ \$360 - \$1,799

Mitchell & Suzie Baylis
Steve Billor
Anita Clifford
Caren Magdovitz
Stephen & Anna Feldman
Carol Roberts
Bruce & Janice Sperry
Allan & Denise Weber
Alan Weiss & Toby Koch
Michael & Gail Verlin
Neal & Janet Kavesh

CHAI BRIDGE ☆ \$180 - 359

Jon & Isabell Ellis
Randy & Danita Freedman
David & Carol Anne Friedman
Michael & Lea Garbett
Margaret Khan
Brian & Arlene Salter
Nathan & Fruma Tanzer

CHAVERIM BRIDGE ☆ \$36 - 179

Joan Frankel
Meral Ginsberg
Barbara Glaser
Michael & Cheryl Lubin
Maria Miranda
Mags Oldman
Janice Perelman
Joe & Carol Plesur
Sue Reckner
Arleen Sanders
Howard & Sandy Saviet

The High Holy Day Appeal for 5781 is open through the end of January 2021. To make a contribution, please contact the office. This does not include donations made through the Book of Remembrance or Adopt-a-Book Campaigns, nor does it include non-members. If there are any errors or omissions to this listing, please notify the office as well.

ROARING 20s GALA SPONSORS

When it's time to pick a vendor or hire a professional for services, keep in mind these generous businesses that support CBS. Thank you to the following businesses and friends for their participation in our Roaring 20s Gala.

SPONSORS

Segal Funeral Home
Colorado Health & Youth Dermatology
Hillsboro Memorial Funeral Home
St. Petersburg Opera Company
Stephen & Anna Feldman
Christopher Waite, DMD (Brandon Dental)
Zomesa
HUB
Keith Balot - Kids 'R' Kids
Mark & Sheryl Finke
Errol & Sheila Fishman
Diane & Peter Jacobson
Anonymous
Robert Clarke Industries
Allan & Denise Weber
Dave & Carol Anne Friedman
Gerry & Judith Pliner
Brandon Plastic Surgery
Advanced Oral Surgery of Tampa
Toby Koch & Allan Weiss
Dr. Stephen Zweibach -
Women's Health & Wellness
Gulfside Pool & Spa Inc.
Reed & Reed
Isabel & Jonathan Ellis
Danita & Randy Freedman
Jan & Bruce Sperry
Dr. Shawn & Sam Wallace
Melissa Golden
Meral Ginsberg
Joan Frankel
Mitch & Suzie Baylis
Steve & Sheila Slavkin
Dr. Jeremy Rogers - Florida ENT & Allergy
Gail & Michael Verlin

SPECIAL THANKS TO

David Morris, Entertainer
Brandon Elks Lodge
Blake Kennedy, Auctioneer
Mitch & Suzie Baylis and
our FUNdraising Committee

DONATIONS

Congregation Beth Shalom accepts donations for many purposes, with a variety of opportunities for donors to support the good works of the Temple. You may contact the office either by phone or email to make a contribution, or head to our website to make a secure online payment through a PayPal account or by using a credit card.

Funds:

- **General Fund** (unrestricted): An unrestricted gift to the General Fund allows the temple to use those funds wherever they may be needed most. This fund incorporates contributions received from our High Holy Day Appeal, Yahrzeit donations, Bricklets, Adopt-A-Book, Tree of Life (unless otherwise indicated) and other non-restricted gifts.
- **Building Fund:** A fund to ensure the continuing physical growth of our spiritual home. Intended for capital improvements and major building repairs.
- **Endowment Fund:** Gifts to this fund are placed in an investment account and temporarily restricted or can be defined/restricted by the donor. This fund ensures the future of our temple.
- **Religious School Scholarship Fund:** These funds will be made available to Religious School students who are in need of tuition assistance, as determined confidentially by the Treasurer.
- **Rabbi's Discretionary Fund:** a fund for assistance to families in need, scholarship assistance, interfaith council, Holocaust museum and other endeavors at the Rabbi's discretion.
- **Youth Group Fund:** a fund that supports the ongoing engagement of post b'nai mitzvah youth, providing meaningful and fun experiences for our teens, and keeping them connected to their Jewish community.

If you wish to designate a gift to a particular purpose, for example, Food Bank, Choir, Oneg, Social Action, etc., you may do so by noting as such on your payment method or with an accompanying note; otherwise, your gift will be used where it is needed most.

Opportunities:

- **Adopt-A-Book:** A dedication label will be placed in one of our prayer books, to commemorate a simcha or in honor or memory of a loved one for just \$54.
- **Bricklets:** For as little as \$9 you can send a Bricklet Card instead of buying a card for birthdays, condolences, etc. A Bricklet Card in your name will be sent to the person you wish stating that a donation has been made in his or her name to Beth Shalom to honor the occasion.
- **Tree of Life:** The Tree of Life is on the back wall of our Sanctuary. An engraved leaf or stone can commemorate many simchas, b'nai mitzvah, wedding, birth, graduations, etc. Leaves are \$180, and stones are \$1800.
- **Yahrzeit Plaque:** To honor the death of a loved one, you may purchase a plaque that will be cared for in perpetuity for \$350. The name of the deceased along with their date of death is included on the plaque.

*Unless otherwise noted by you, your gift will be acknowledged in The Kibbitzer the month following its receipt.
If your donation is incorrectly listed or omitted, please notify the temple office immediately.*

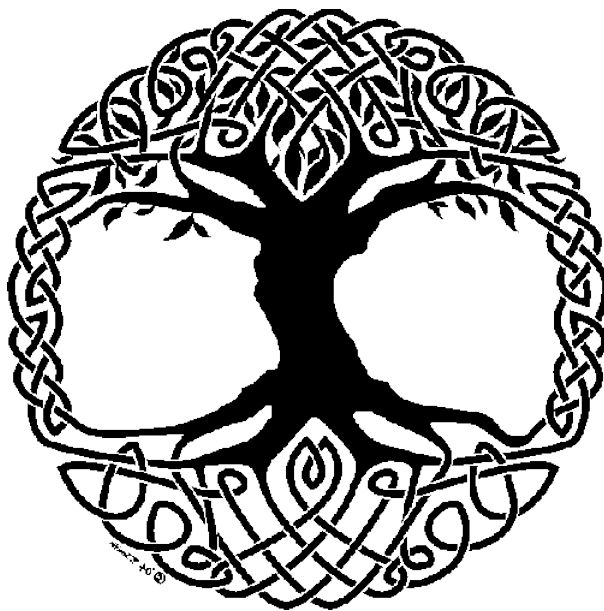
Donations listed below were received between May 16 and June 15.

GENERAL FUND

In Loving Memory of Beth Clare
Gail Verlin

In Loving Memory of Milton Newman
Stephen & Anna Feldman

In Loving Memory of Deborah & Gerald Goldberg
Rachel & Jimmy Duncan





Anniversaries

7/4 Seth & Paige Dugan
7/10 Sheryl & Mark Finke
7/24 Carol & Steven Hinden



Birthdays

7/3 R. Dugan
7/11 T. Koch
7/12 A. Clifford
7/16 J. Kavesch
7/19 M. Wyatt
7/20 L. Kaler
7/20 J. Sperry
7/24 J. Jacob



Yahrzeits

7/5	Nellie A.	Douglas	Grandmother	of	Jimmy	Duncan
7/6	Kenneth	Rosenbaum	Husband	of	Helene	Rosenbaum
7/9	Joseph	Gaba	Grandfather	of	Leslie	Boyar
7/10	Deborah	Glickman	Mother	of	Betsy	Glickman
7/10	Sandor	Winter	Grandfather	of	Gary	Ronay
7/12	Lia	Lifschitz	Mother	of	Gabriel	Lifschitz
7/16	Charlotte	Winter	Grandmother	of	Gary	Ronay
7/20	Robert	Miller	Father	of	Eric	Miller
7/20	Harry	Feldman	Father	of	Myron	Feldman
7/21	Lilyan	Gould	Mother	of	Sandra	Saviet
7/21	Dorothy	Ratner	Mother	of	Ira	Ratner
7/23	Chris	Shadowens	Brother	of	Lea	Garbett

The dates listed for the Yahrzeits are adjusted yearly according to the Jewish Calendar and may not necessarily coincide with the common date of death. Names are read for Kaddish at the Shabbat before the actual date. If you would like to have the common date listed, please contact the temple office.

Want to advertise in *The Kibbitzer*?

Ad Size	Monthly Rate	10% Discounted (Annual only)
Bus. Card	\$20	\$216
1/4 page	\$40	\$432
1/2 page	\$50	\$540
Full page	\$75	\$810

Special rate for CBS Members — 10% off
MONTHLY rate with 6-month commitment.

To reserve your place in the next issue, e-mail the
temple office at
cbs-brandon@outlook.com or call 813-681-6547.

Babysitters

Contact the temple office for a list of available
babysitters. Contact information, qualifications and
transportation details are available for each sitter. We
will not publish information about our younger
members online due to privacy concerns.



ATTENTION! We send *The Kibbitzer* out online. This change has been made to help decrease one of our expenses at Beth Shalom.

However, if you prefer receiving your *Kibbitzer* via the US Mail, please call the Temple at (813) 681-6547 or e-mail the Temple (cbs-brandon@outlook.com) to tell us you **do not** want to get your *Kibbitzer* online. Please help Beth Shalom cut its expenses and receive your *Kibbitzer* sooner.



Thank You.

Now when you shop at smile.amazon.com, your purchases will support Congregation Beth Shalom Of Brandon Inc.

[Change your charity](#)



Next, make it easy to return to smile.amazon.com.
Install the AmazonSmile shortcut in your browser.

Install now for Internet Explorer

Share your support: [f](#) [t](#)

Dismiss



Congregation Beth Shalom is now participating in Amazon Smile — it's an easy way for CBS members, family and friends to support the temple. Simply use the following link:

<http://smile.amazon.com/ch/59-3026396> and shop, shop, shop!

JOIN US

Become a CBS member at
<https://bethshalom-brandon.org/wp-content/uploads/sites/173/2020/06/Membership-Application-2020-2021-2.pdf>



FOLLOW US ON TWITTER
[@CBSBrandon](#)

FOLLOW US ON INSTAGRAM
[@cbsbrandon](#)



CBS ON FACEBOOK

- Congregation Beth Shalom
- Congregation Beth Shalom of Brandon Religious School Parent Association
- BESTY & BESTY Jr. Parents
- Congregation Beth Shalom of Brandon

July 2021

24	28	29 6:30pm Executive Meeting	30	1	2 7:30 PM Erev Shabbat Service-	3 10 AM The Bat Mitzvah of Judy Lubin
4	5	6 7:00pm Board Meeting	7	8 6:30pm Fundraising	9 7:30pm Erev Shabbat Service Kibbitzer deadline	10
11	12	13	14	15	16 7:30 PM Erev Shabbat Service	17
18	19 7:00 pm Page Turners	20	21 6:30 pm Ladies Night Out	22	23 Erev Shabbat Service	24 7:30 PM Dinner With The Tribe
25	26	27 6:30 pm Executive Committee	28	29	30 7:30pm Erev Shabbat Service	31

Inside Scoop

<i>Membership</i>	<i>3</i>
<i>Dinner With The Tribe</i>	<i>4</i>
<i>Social Action</i>	<i>7</i>
<i>Ladies Night Out</i>	<i>8</i>
<i>Religious School</i>	<i>9</i>
<i>Calendar</i>	<i>15</i>

**We Do Things Better
When We Do Them Together.**