

# The Kibbitzer

*Congregation Beth Shalom*

706 Bryan Road, Brandon, FL 33511

Phone (813) 681-6547

[www.BethShalom-Brandon.org](http://www.BethShalom-Brandon.org)

**June 2021**  
**Volume 32, Issue 1**

## **Rabbi**

**Paul Schreiber**

**Reb Tuviah** 813-681-6547

## **Cantorial Soloist**

**Sandy Santucci** 813-681-6547

## **Executive Board:**

### **President**

**Steve Billor** 813-267-6585

### **Past President**

**Gerry Pliner** 856-816-2178

### **1st VP**

**Gerry Pliner** 856-816-2178

### **2nd VP**

**Toby Koch** 813-654-0877

### **3rd VP**

**Sheryl Finke** 813-380-3880

## **Treasurer**

**Suzie Baylis** 808-561-8130

## **Secretary**

**David Friedman**

## **Members at Large**

**Mitch Baylis** 808-561-8130

**Allan Weber** 267-885-4806

**Lynn Kaler** 813-494-5163

**Gabriel Lifschitz** 571-277-1416

open

## **FROM THE RABBI** - Rabbi Paul Schreiber, Reb Tuviah

### **On a Final Note ...**

It is with some sadness that I write my very last article for *The Kibbitzer*. I came to Congregation Beth Shalom in July of 2020 with high hopes and expectations. Due to a number of factors, factors which certainly do not need to be mentioned here, things just didn't work out. I take solace in knowing that with the right leadership in place, both rabbinic and, most importantly, on the board, things can turn around and CBS can begin to see growth in membership along with a renewed sense of joy and kindness. Brandon needs Jewish representation and hopefully, CBS can be that beacon of light shining throughout Hillsborough County.



Over the course of the year, I have come to know many of you and have truly enjoyed your presence. We have spent Friday evenings together (albeit mostly virtual) celebrating Shabbat and meeting again every Tuesday evening for Adult Education classes. I was honored to celebrate every holiday that comprises our awesome Jewish calendar; Tashlich, the High Holidays, Sukkot and Chanukah, to name just a few. Additionally, we shared monthly Healing Circles, a few Havdalah services and even baked matzah together! Nancy and I have met some truly remarkable and kind-hearted people, and we will carry them in our hearts for the rest of our lives.

As for the Friday night services themselves, it brought me great joy sharing the bimah with Sandy Santucci. She is truly an amazing woman with a beautiful voice. I am so very grateful that we were finally able to open the doors of the sanctuary so that she and I could conduct services and sing together, even if it was only for a few months. Thank you Sandy for being the best cantorial soloist any rabbi could ask for!!!

I wish the CBS community all the best as you move forward and although I could say so much more, I feel the most important advice I can leave you with are five simple words ... be kind to one another.

*L'Shalom,  
Reb Tuviah, Nancy (and Junie)*

### **Important Note**

Our former congregation email account was compromised.

Please make a note that our new email is [cbs-brandon@outlook.com](mailto:cbs-brandon@outlook.com). Don't forget to add us to your contacts so you do not miss any important information and updates.

**We are now OPEN for Friday night services. Events will also be live-streamed. Please check the eBlast for the latest information and details.**

## FROM THE PRESIDENT - Steve Billor

Shalom Beth Shalom,

So, this is my first posting as president of Congregation Beth Shalom.

I have been a member since moving to Brandon in 1991. I started attending when we were using the Baptist Church for most Shabbat services as well as High Holidays. At times we even had our High Holiday services at a conference room at the Hard Rock Hotel.

We have had many ups and downs over the decades that I have been attending CBS, but we always prevailed. It was an amazing accomplishment when we opened our own synagogue and had our first High Holiday service in our new temple. We were a thriving congregation then and I am hoping to bring that back. I was always a quiet member over all those years, as my priority was raising my two children and I still have a very active role in their lives, even though they are now in their 20s. I am going to give some of my very valuable time to the temple in an attempt to restore it to its previous greatness, as I believe Congregation Beth Shalom deserves a fighting chance to thrive again.

My main goal is to bring people together and curb the "heated discussions." It is inevitable that people of the "Tribe" will engage in passionate debate, but my hope is to

end the debates with mutual respect and love. I will make myself available to anyone that has input into how we can accomplish the above stated goals, as I would like to lead us with a humble and openminded mentality. In the end, with my 15 years of experience in the U.S. Air Force and 30 years in law enforcement, as needed and when necessary, I will be a firm grounded leader.

I thank you in advance for your support. Let us get back to pre-covid activities and enjoy each other's company at Congregation Beth Shalom.



### CARING COMMITTEE — Judith Pliner

Hi CBS members,

I am the new chair of the Caring community. If you are interested in joining our committee, we would love to have you. If you know of a member who is ill, hospitalized, in need of help, or just some cheering up, please contact me by email at [bunnies94@aol.com](mailto:bunnies94@aol.com) or phone at 856-816-2174.

We will do our best to fulfill your expectations. Tikkun Olam begins right here at Congregation Beth Shalom with people helping people.

Judith Pliner  
Caring Committee Chair



### Important Note

Our former congregation email account was compromised.

Please make a note that our new email is [cbs-brandon@outlook.com](mailto:cbs-brandon@outlook.com). Don't forget to add us to your contacts so you do not miss any important information and updates.



UNION FOR **MEMBER**  
REFORM JUDAISM

האיחוד ליהדות רפורמית

SERVING REFORM CONGREGATIONS IN NORTH AMERICA

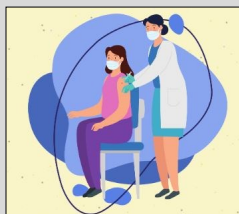
**Congregation Beth Shalom provides a meaningful spiritual home for people of all ages and levels of knowledge, a place to learn and to question, a place to worship and to celebrate, and a place to find a community that cares.**

#### **We offer:**

- ✧ **Friday worship services at 7:30 p.m.**
- ✧ **Religious school pre-k through 10th grade**
- ✧ **Complete B'nai Mitzvah preparation**
- ✧ **Youth group programming**
- ✧ **Adult Education classes**
- ✧ **Community-wide events, including Mitzvah Day**

## Upcoming Dates To Remember

• **Wednesday, June 2, 10 a.m. – 6 p.m.:** Free covid vaccines. Please see page 10 for details and more information.



• **Tuesday, June 8, 7:30 p.m.:** Adult education.

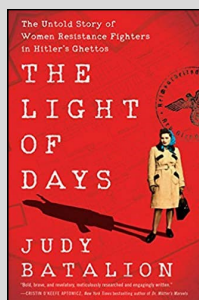
• **Wednesday, June 9, 6:30 p.m.:** Healing circle. Details on page 8.

• **Saturday, June 12, 7 p.m.:** Dinner With the Tribe. More information on page 4.

• **Tuesday, June 15, 7:30 p.m.:** Adult education.

• **Tuesday, June 29, 7:30 p.m.:** Adult education.

• **Monday, July 19, at 7 p.m.:** Page Turners. More information on page 5.



• **Saturday, July 3, 10 a.m.:** The Bat Mitzvah of Judy Lubin.

• **Wednesday, July 21, 6:30 p.m.:** Ladies Night In. More information on page 7.

• **Sunday, Aug. 8, 11 a.m.:** Congregation open house. More information on page 6.

*Religious Education Calendar, page 9;  
Full calendar, page 15*

## MEMBERSHIP

The membership committee encourages all of our members to reach out and post our congregation events on your neighborhood message and social media boards. Our events are open to the public and we welcome all to join us.

– Sandee Pelk & Lea Garbett

## June Oneg Schedule

*There can be no joy without food and drink. — Talmud, Mo'ed Katan*

We hope you and your family are doing well.

The Oneg Committee has not scheduled oneg hosts for the month of June.

Due to COVID-19 precautions, our in person services will only have challah and wine and juice, which will be provided by the congregation.

If you have any questions or are interested in hosting a future oneg, please contact at Judith 856-816-2174.

*Judith Pliner*

## The Kibbitzer

Volume 32, Issue 1  
Published Monthly by  
Congregation Beth Shalom  
706 Bryan Road  
Brandon, FL 33511  
Phone 813-681-6547  
Email: CBS-brandon@outlook.com

Email and articles for publication:  
TheKibbitzer@hotmail.com  
For current news and events  
see the congregation's website:  
<http://www.bethshalom-brandon.org>  
\*\*\*\*\*

### Congregation Contacts

813-681-6547 • CBS-brandon@outlook.com

### Office hours:

By appointment.  
Voicemails and emails will be monitored daily.  
Office is closed on holidays

### Weekly Email Blast submissions

[bethshalominfo@gmail.com](mailto:bethshalominfo@gmail.com)  
eBlast deadline is Wednesday at 4 p.m.



## SPECIAL RECOGNITIONS

### Judy Mari Lubin



Cheryl and Michael Lubin invite you to share a proud and special moment as we celebrate with joy the Bat Mitzvah of our daughter, Judy Mari. Judy will be called to the Torah on Saturday, July 3, at Congregation Beth Shalom at 10 a.m. A luncheon will follow the ceremony.

Judy recently graduated 8th grade at Bell Creek Academy and will be starting 9th grade at Bell Creek Academy High School in the fall. She is a member of the cross-country team and the track & field team. The girls middle school team is currently #1 in the region. Judy is also a member of the Girl/Boy Scouts of America. She enjoys swimming, singing at synagogue, dancing, gymnastics, reading, writing essays, traveling, and

playing with her pets. She recently earned her orange-striped belt in karate.

For her Bat Mitzvah project, Judy participated in volunteer work and beautification of our synagogue. This included preparing apples and honey that was handed out to our congregants last Rosh Hashana, setting up tables and chairs for our open house and outside Shabbat and holiday services, and washing the sidewalks around the synagogue. She plans to continue helping by tutoring younger students with songs and kariat Torah.

## DINNER WITH THE TRIBE — Anita Clifford

Dinner With the Tribe will do it again! Our last dinner at Yummy House was a huge success! Check out some of our photos.

**Saturday,  
June 12, 7 p.m.**  
Bonefish Grill,  
1015 Providence  
Road, Brandon



They require masks.

Join us as we get together for a relaxed dinner with friends. This place is a favorite of many with a healthy seafood-centric menu but also with steaks and cocktails if you desire.

Reserve your spot by sending me an email saying you will attend.

Anita Clifford  
[niewdnarb@yahoo.com](mailto:niewdnarb@yahoo.com)  
813-545-8769 (cell)



## Committees/Chairpersons

### Building/Capital Fund

Peter Jacobson

### Caring

Judith Pliner

### Finance\*

Gerald Pliner

### Fundraising\*

Mitch & Suzie Baylis

### Life Long Learning\*

open

### Strategic Planning\*

Steve Feldman

### Membership\*

Sandee Pelk, Lea Garbett

### Retention

Judith Pliner

### Oneg

Judith Pliner

### Publicity

Toby Koch

### Ritual\*

open

### Facility and Safety

Marvin Shienbaum, Gabe Lifschitz

### Social Action\*

Judith Pliner

### Religious School\*

Reb Tuviah

### BESTY—Youth Group\*

open

*\* Ex-officio voting board member  
(each committee only gets one vote)*

## Other Programs

### CBS Singles Over 50

Anita Clifford

### Chavurah

Anita Clifford

### Dinner With the Tribe

Anita Clifford

### Interfaith/Outreach

open

### Kibbitzer Editor

Lea Garbett

### Kolot Shalom — Choir

open

### Library

Sandy Saviet

### Men's Club

Seth Dugan

### Page Turners

Anita Clifford

### Web Administrator

Toby Koch



**Join with CBS in offering congratulations and recognition to the following members on their accomplishments:**

### KUDOS

- Kudos to **Janet Kavesh** for volunteering to send out our congregation bricklets and yahrzeit letters.
- Kudos to **Toby Koch, Mitch Baylis, and Rachel Duncan** for the many hours spent on the search for our next rabbi.
- Kudos to **Suzie Baylis** and **all those who helped** with the brunch for Rabbi Lefkowitz.



### MAZELS

- Mazel tov to **all our students** for their hard work and success in this difficult school year.
- Mazel tov to **Jacob Garbett** for winning the 2020 Anne Frank Humanitarian Award for Spoto High School from The Florida Holocaust Museum.
- Mazel tov to **Lea Garbett** for her Woman of Distinction award.
- Mazel tov to all our **new board members**. Thank you for your service to our congregation.

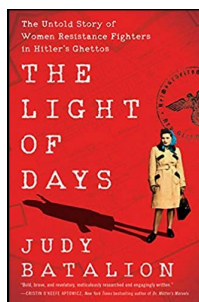
*Do you know a CBS member who should be congratulated for a special accomplishment?  
If so, email the name and accomplishment to [cbs-admin@hotmail.com](mailto:cbs-admin@hotmail.com).*

## PAGE TURNERS

Join us Monday, July 19, at 7 p.m., as Page Turners discusses *The Light of Days*, by Judy Batalion.

We invite those who are intrigued by the contributions of Jewish women who were Resistant Fighters during the Holocaust to join us for our next meeting.

While little is known about these Jewish women's brave involvement as resistance fighters against the Nazis, Judy Batalion, author of *The Light of Days*, has done an amazing job retelling some of their harrowing experiences. At last, the true story of these little-known feats that have been eclipsed over time are finally being published for the public to read. Ba-



talion, a granddaughter of Polish Holocaust Survivors, takes the reader back to 1939 and introduces us to Renia Kukielka, a weapons smuggler and messenger who risked her life traveling across occupied Poland on foot and by train.

Along with Renia there are other women who served as couriers, armed fighters, intelligence agents and saboteurs, all of whom endangered their lives to carry out their missions. Batalion follows these brave women through the savage destruction of the ghettos, arrests and internment in the Gestapo prisons, and concentration camps.

For the fortunate few women, such as Renia, who managed to orchestrate her own escape from a brutal Nazi jail, we now have their astonishing and remarkable stories thanks to Judy Batalion!

## THE LIBRARY CORNER — Sandy Saviet



Following a year of being closed due to COVID, the Congregation Beth Shalom library is still getting organized. We appreciate your patience while our helpers and volunteers work on this process.

In the meantime, if you are looking for some suggestions, feel free to look at past issues of The Kibbitzer for my recommendations.

- Sandy Saviet

## OPEN HOUSE

You are invited to the Congregation Beth Shalom Open House on Sunday, Aug. 8, from 11 a.m. until 2 p.m. Let your family get to know our family and make some new friends. We have lots in store – complimentary lunch, music, games and our new rabbi is eager to meet you.

This will also be a wonderful opportunity to acquaint yourself with our dynamic and varied educational and spiritual programming designed to address the wants and needs of the wide demographic that is representative of our family.

And, is our custom, this will be the time to learn about the religious school. Our religious school classes are designed to meet the educational needs of children kindergarten through Confirmation. We are continuing our cutting-edge religious school curriculum which has been specifically developed for Congregation Beth Shalom. During the open house, you will have an opportunity to preview the curriculum, review the text books, meet this year's teachers, and enroll your child(ren) in classes.

We are continuing with a once-a-week program beginning with Sunday, Aug. 15. For grades 2 through 7, school hours continue to be 9:30 a.m. until noon, but our day begins with our worship service at 9:30 a.m. The service is followed by a 1-hour Hebrew class and 1-hour Judaica class. For kindergarten and 1st grade, school commences Aug. 15, as well, and children will be meeting for 18 sessions during the school year. A calendar of classes will be available at the open house.

For those interested in just the religious school, our **Chai Program** allows your children under the age of five, the full religious school experience without becoming a partner in the congregation.

**For Chai Program**, the fee is \$325. Sign up at the open house and receive \$25 off your paid in full enrollment.

**"L'Dor Vador"** is a very successful program that has helped many of our families. Specifically designed for students age 11 - 16 who have not been Bar or Bat Mitzvah. It is our goal to pass on our traditions from generation to generation. This will be a special 2-year program culminating with the B'Nai Mitzvah. These students will be meeting during regular religious school hours. With the final 9 months of the program, the students will also attend private tutoring to specifically prepare for their B'Nai Mitzvah. Attendance in this program requires the family become a partner at Congregation Beth Shalom. The cost of this program is \$325 annually. There will also be a B'Nai Mitzvah fee prior to beginning the tutoring program. We believe every child should be afforded the Jewish experience despite any circumstances.

Our goal is to give every child, every opportunity. We can try and accommodate those parents who are in difficult situations. Our treasurer will be on hand to assist in any financial situations to ensure your children get every opportunity of a solid Jewish foundation.

## A Note About Pastoral Care

Reb Tuviah wants to know when congregants are in need of pastoral care.



This includes but is not limited to: when our congregants or their family members are in the hospital, recently lost a loved one, or otherwise may need his support.

If you hear about a congregant in need, please contact Reb Tuviah directly at [rebtuviah@gmail.com](mailto:rebtuviah@gmail.com)



Your 100% Satisfaction is Absolutely Guaranteed !

**Clarke Automotive Systems**

*If you have a problem with your car, let us give you our honest, expert & straightforward advice so the job is done right—the first time !*

**Bob Clarke**  
(813) 685-2939

**131 Central Ave**  
**Brandon, FL 33510**

## Doogie Entertainment

DJ and Party Services

Weddings  
Bar/Bat Mitzvahs  
Children's parties  
80's & 90's video parties  
Office Parties  
PA system rental/set-up



Phone: 813-400-3609  
[www.DoogieEntertainment.com](http://www.DoogieEntertainment.com)  
E-mail: [Doogie@DoogieEntertainment.com](mailto:Doogie@DoogieEntertainment.com)

Pleased to offer a 10% discount on services to members of Congregation Beth Shalom

## *Ladies Night In*

Rescheduled for Wednesday, July 21, 6:30 p.m.  
Due to your facilitator is missing —  
Can you guess where Jimmy and I went???

See you'all next month,  
Rachel  
[superrachel@att.net](mailto:superrachel@att.net)  
469-774-8961



## **SOCIAL ACTION — Judith Pliner**

Our community food pantry is open for all in need. If you or someone you know needs help, please contact Judith Pliner at [gp@pliner-inc.com](mailto:gp@pliner-inc.com) or Suzie Baylis at [all4suzie@gmail.com](mailto:all4suzie@gmail.com).



We are currently seeking donations of the following for our pantry:

- bar soap
- body wash
- laundry detergent
- feminine hygiene products
- kid's cereals
- spaghetti sauce
- toilet paper

If you would like to donate any of these items, please contact us. Thank you.

*The Social Action Committee*



**BEN FERNANDES & KEITH BALOT**  
OWNERS

phone: 813.657.6200  
fax: 813.413.2045  
[Keith@krkvalrico.com](mailto:Keith@krkvalrico.com)

4321 Lynx Paw Trail  
Valrico, FL 33596  
[Ben@krkvalrico.com](mailto:Ben@krkvalrico.com)

[www.krkvalrico.com](http://www.krkvalrico.com)

*Roman Glass*  
ART & JEWELRY



Rachel Arbel

Tel. +972-4-6261114 | Cel. +972-544-592383

[www.rachelarbel.com](http://www.rachelarbel.com)

[cromanglass@gmail.com](mailto:cromanglass@gmail.com)



## LIFELONG LEARNING



We are now looking for a volunteer to become chairperson of Lifelong Learning. The Lifelong Learning committee is a creative group of dedicated individuals. Some of the programs they arrange are educational, some are just fun. The committee exists to get the members of Congregation Beth Shalom engaged and involved.

If you are interested in becoming chairperson or even becoming a committee member, please contact Toby Koch at [tobykoch@hotmail.com](mailto:tobykoch@hotmail.com).

### Important Note

Our former congregation email account was compromised. Please make a note that our new email is [cbs-brandon@outlook.com](mailto:cbs-brandon@outlook.com). Don't forget to add us to your contacts so you do not miss any important information.



### Jewish Healing Circle

As humans, we are all in need of healing.

As friends, caregivers, family members, and planetary citizens,  
we can pray for ourselves and all those in need of healing.

Let us come together to form a healing community through  
prayer, reflection and song in our tradition.

**Wednesday, June 9th at 6:30pm  
via Zoom**

Please join Reb Tuviah and special guest  
Sue Gurland for an evening of "Healing Through Song & Chant."

Now more than ever,  
we need to find that space of healing...  
for ourselves, for our country and for our planet.

Please bring a candle to this gathering.

*Improving the health  
of women every day.*

*Our Doctors:*

Stephen Zweibach, MD

Natasha Champion, MD

Mariel Rotundo-Patino, DO

*Now Accepting:*

Tricare Members



*Our Services:*

- Gynecology & Obstetrics
- Bladder Problems
- Bleeding & Pain Problems
- Weight Management
- Botox

Women's Care Florida offers obstetrics and  
gynecologic care for women through all phases of life,  
from your pre-teen years to post-menopausal years.  
*Call today to schedule an appointment!*



515 S. Kings Ave., Suite 1300 • Brandon, FL  
13148 Vail Ridge Dr., • Riverview, FL

**813.571.2777** *Se Habla Espanol*





## EDUCATION

### Bar/Bat Mitzvah Information

**TUTORING:** Bar/Bat Mitzvah tutoring is available. Contact Reb Tuviah to make an appointment and set a date.

**ANNOUNCEMENTS:** If you would like to have information on your child's upcoming Bar or Bat Mitzvah listed in *The Kibbitzer*, please submit an article and picture (digital if possible) to [thekibbitzer@hotmail.com](mailto:thekibbitzer@hotmail.com) by the second Friday of



We are so excited to begin another school year at Congregation Beth Shalom and we hope the children are just as excited! Our religious school will meet on Sundays at 10 a.m.

For now, and in the interest of everyone's safety, we will be meeting virtually via Zoom. Let's get ready for a great year at CBS!

If you are interested in enrolling your child in our religious school program, please contact Reb Tuviah directly at [rebtuviah@gmail.com](mailto:rebtuviah@gmail.com).

**Due to COVID-19, please check the eblast for the most current information and details.**

### Are You Supporting our Commercial Advertisers?

We urge all of our readers to patronize our commercial advertisers and, when you see them, to thank them! Their advertising dollars help support our many programs at CBS!



### CBS ON FACEBOOK



- Congregation Beth Shalom
- Congregation Beth Shalom of Brandon Religious School Parent Association
- BESTY & BESTY Jr. Parents
- Congregation Beth Shalom of Brandon

### CONFIRMATION

**Calling all teens who want to continue to explore their growth and knowledge of Judaism, Jewish thought, and Jewish life!**

Plans are now under way with Reb Tuviah to meet with our confirmation students, youth group members, and any interested teens ages 13-16 effective with the 2020-21 school year. We are considering meeting monthly, but no specific dates have been identified.

Topics being considered for these meetings could include:

- how to address modern issues within the text of Jewish law,
- ethical practices,
- the place of Israel in our lives,
- anti-Semitism and racism, and
- other religions.



However, we welcome any suggestions from our youth or their parents.

With your help, the curriculum can be exciting and interesting –and we hope to provide further conversations within families about Judaism and Jewish life.

If you have any suggestions for this program, please reach out to Reb Tuviah at [rebtuviah@gmail.com](mailto:rebtuviah@gmail.com) or the temple office.

## **Take Your Shot at Beating the Virus**

Wednesday, June 2, from 10 a.m.- 6 p.m., the State of Florida Health Department will be administering the one-shot Johnson & Johnson COVID-19 vaccine at Congregation Beth Shalom of Brandon. Several tents will be out front the temple and health care professionals will be providing the.

There is no fee for the vaccine. This service will be available to those who are 18 and up and who have not been vaccinated

If you need further information regarding this event, please refer to <https://www.floridadisaster.org/covid19/vaccine/>. If you need further information regarding the COVID-19 vaccine, please refer to <https://www.cdc.gov/cdc-info/ask-cdc.html>.

**STATE-SUPPORTED  
COVID-19 VACCINATION EVENT**

**FREE COVID-19 VACCINES | WEDNESDAY, JUNE 2 | WALK-UPS ACCEPTED**

**CONGREGATION BETH SHALOM OF BRANDON**  
**706 Bryan Rd**  
**Brandon, FL 33511**

**10 A.M. - 6 P.M. | JOHNSON AND JOHNSON**

**COVID-19 VACCINES AVAILABLE**  
**PFIZER VACCINE – 12 YRS OLD AND UP (2 shots)**  
**JOHNSON & JOHNSON – 18 YRS AND UP (1 shot)**

**FDEM**  
DIVISION OF EMERGENCY MANAGEMENT  
OFFICE OF THE GOVERNOR

## THANK YOU TO OUR HIGH HOLY DAYS BRIDGE BUILDERS 5781

### BONIM BRIDGE ☆ \$3,600—\$7,500

- (1) Anonymous
- (2) Anonymous
- (3) Anonymous

### MITZVAH BRIDGE ☆ \$360 - \$1,799

Mitchell & Suzie Baylis  
Steve Billor  
Anita Clifford  
Caren Magdovitz  
Stephen & Anna Feldman  
Carol Roberts  
Bruce & Janice Sperry  
Allan & Denise Weber  
Alan Weiss & Toby Koch  
Michael & Gail Verlin  
Neal & Janet Kavesh

### CHAI BRIDGE ☆ \$180 - 359

Jon & Isabell Ellis  
Randy & Danita Freedman  
David & Carol Anne Friedman  
Michael & Lea Garbett  
Margaret Khan  
Brian & Arlene Salter  
Nathan & Fruma Tanzer

### CHAVERIM BRIDGE ☆ \$36 - 179

Joan Frankel  
Meral Ginsberg  
Barbara Glaser  
Michael & Cheryl Lubin  
Maria Miranda  
Mags Oldman  
Janice Perelman  
Joe & Carol Plesur  
Sue Reckner  
Arleen Sanders  
Howard & Sandy Saviet

*The High Holy Day Appeal for 5781 is open through the end of January 2021. To make a contribution, please contact the office. This does not include donations made through the Book of Remembrance or Adopt-a-Book Campaigns, nor does it include non-members. If there are any errors or omissions to this listing, please notify the office as well.*

## ROARING 20s GALA SPONSORS

*When it's time to pick a vendor or hire a professional for services, keep in mind these generous businesses that support CBS. Thank you to the following businesses and friends for their participation in our Roaring 20s Gala.*

### SPONSORS

Segal Funeral Home  
Colorado Health & Youth Dermatology  
Hillsboro Memorial Funeral Home  
St. Petersburg Opera Company  
Stephen & Anna Feldman  
Christopher Waite, DMD (Brandon Dental)  
Zomesa  
HUB  
Keith Balot - Kids 'R' Kids  
Mark & Sheryl Finke  
Errol & Sheila Fishman  
Diane & Peter Jacobson  
Anonymous  
Robert Clarke Industries  
Allan & Denise Weber  
Dave & Carol Anne Friedman  
Gerry & Judith Pliner  
Brandon Plastic Surgery  
Advanced Oral Surgery of Tampa  
Toby Koch & Allan Weiss  
Dr. Stephen Zweibach -  
Women's Health & Wellness  
Gulfside Pool & Spa Inc.  
Reed & Reed  
Isabel & Jonathan Ellis  
Danita & Randy Freedman  
Jan & Bruce Sperry  
Dr. Shawn & Sam Wallace  
Melissa Golden  
Meral Ginsberg  
Joan Frankel  
Mitch & Suzie Baylis  
Steve & Sheila Slavkin  
Dr. Jeremy Rogers - Florida ENT & Allergy  
Gail & Michael Verlin

### SPECIAL THANKS TO

David Morris, Entertainer  
Brandon Elks Lodge  
Blake Kennedy, Auctioneer  
Mitch & Suzie Baylis and  
our FUNdraising Committee



## DONATIONS

Congregation Beth Shalom accepts donations for many purposes, with a variety of opportunities for donors to support the good works of the Temple. You may contact the office either by phone or email to make a contribution, or head to our website to make a secure online payment through a PayPal account or by using a credit card.

### Funds:

- **General Fund** (unrestricted): An unrestricted gift to the General Fund allows the temple to use those funds wherever they may be needed most. This fund incorporates contributions received from our High Holy Day Appeal, Yahrzeit donations, Bricklets, Adopt-A-Book, Tree of Life (unless otherwise indicated) and other non-restricted gifts.
- **Building Fund:** A fund to ensure the continuing physical growth of our spiritual home. Intended for capital improvements and major building repairs.
- **Endowment Fund:** Gifts to this fund are placed in an investment account and temporarily restricted or can be defined/restricted by the donor. This fund ensures the future of our temple.
- **Religious School Scholarship Fund:** These funds will be made available to Religious School students who are in need of tuition assistance, as determined confidentially by the Treasurer.
- **Rabbi's Discretionary Fund:** a fund for assistance to families in need, scholarship assistance, interfaith council, Holocaust museum and other endeavors at the Rabbi's discretion.
- **Youth Group Fund:** a fund that supports the ongoing engagement of post b'nai mitzvah youth, providing meaningful and fun experiences for our teens, and keeping them connected to their Jewish community.

*If you wish to designate a gift to a particular purpose, for example, Food Bank, Choir, Oneg, Social Action, etc., you may do so by noting as such on your payment method or with an accompanying note; otherwise, your gift will be used where it is needed most.*

### Opportunities:

- **Adopt-A-Book:** A dedication label will be placed in one of our prayer books, to commemorate a simcha or in honor or memory of a loved one for just \$54.
- **Bricklets:** For as little as \$9 you can send a Bricklet Card instead of buying a card for birthdays, condolences, etc. A Bricklet Card in your name will be sent to the person you wish stating that a donation has been made in his or her name to Beth Shalom to honor the occasion.
- **Tree of Life:** The Tree of Life is on the back wall of our Sanctuary. An engraved leaf or stone can commemorate many simchas, b'nai mitzvah, wedding, birth, graduations, etc. Leaves are \$180, and stones are \$1800.
- **Yahrzeit Plaque:** To honor the death of a loved one, you may purchase a plaque that will be cared for in perpetuity for \$350. The name of the deceased along with their date of death is included on the plaque.

*Unless otherwise noted by you, your gift will be acknowledged in The Kibbitzer the month following its receipt.  
If your donation is incorrectly listed or omitted, please notify the temple office immediately.*

---

**Donations listed below were received between April 16 and May 15.**

---

### GENERAL FUND

**In Loving Memory of Joe Plesur**  
Carol Plesur

**In Loving Memory of Simon Freedman**  
Dave & Carol Anne Friedman

**In Loving Memory of Oliver Workman**  
Anna Feldman





## Anniversaries

6/11 William & Jackie Kalbas



## Birthdays



## Yahrzeits

6/2	Irwin	Shaw	Cousin	of	Toby	Koch
6/6	Rose	Steinberg	Grandmother	of	Joanne	Ronay
6/6	Mary	Finkelstein	Great Aunt	of	Joanne	Ronay
6/6	Moses	Finkelstein	Great Uncle	of	Joanne	Ronay
6/7	Anita	Bortson	Cousin	of	Carol	Wagner
6/8	Chaya	Pliner	Grandmother	of	Gerald	Pliner
6/8	Louis	Silverstein	Husband	of	Blossom	Grimm Silverstein
6/9	Michael	Plesur	Father-in-Law	of	Carole	Plesur
6/11	Beth	Clare	Friend	of	Gail	Verlin
6/11	Betty	Hunt	Mother	of	Joan	Frankel
6/12	Agnes	Antonak	Grandmother	of	Lee	Schwartz
6/14	Michael Arthur	Kivel	Ex Husband	of	Carol	Wagner
6/21	Rose	Billet	Grandmother	of	Nancy	Landfish
6/24	Gertrude	Siegel	Grandmother	of	Eric	Miller
6/24	Debbie	Jacob	Sister	of	Jeffrey	Jacob
6/25	May	Licht	Mother	of	Janet	Kavesh
6/25	Mimi	Evans	Aunt	of	Alan	Weiss
6/26	Esther	Lubonne	Mother	of	Carole	Plesur
6/28	Renee	Epstein	Mother	of	Fred	Epstein
6/28	Phyllis	Linden	Mother	of	Ron	Boyer

6/4	G. Verlin
6/5	T. Feldman
6/10	C. Magdovitz
6/12	S. Santucci
6/14	M. Dugan
6/16	J. Garbett
6/23	L. Schwartz
6/25	D. Feldman
6/25	S. Finke
6/30	J. Wyatt

The dates listed for the Yahrzeits are adjusted yearly according to the Jewish Calendar and may not necessarily coincide with the common date of death. Names are read for Kaddish at the Shabbat before the actual date. If you would like to have the common date listed, please contact the temple office.

## Want to advertise in *The Kibbitzer*?

Ad Size	Monthly Rate	10% Discounted (Annual only)
Bus. Card	\$20	\$216
1/4 page	\$40	\$432
1/2 page	\$50	\$540
Full page	\$75	\$810

Special rate for CBS Members — 10% off  
MONTHLY rate with 6-month commitment.

To reserve your place in the next issue, e-mail the  
temple office at  
[cbs-brandon@outlook.com](mailto:cbs-brandon@outlook.com) or call 813-681-6547.

## Babysitters

Contact the temple office for a list of available  
babysitters. Contact information, qualifications and  
transportation details are available for each sitter. We  
will not publish information about our younger  
members online due to privacy concerns.



**ATTENTION!** We send *The Kibbitzer* out online. This change has been made to help decrease one of our expenses at Beth Shalom.

However, if you prefer receiving your *Kibbitzer* via the US Mail, please call the Temple at (813) 681-6547 or e-mail the Temple ([cbs-brandon@outlook.com](mailto:cbs-brandon@outlook.com)) to tell us you **do not** want to get your *Kibbitzer* online. Please help Beth Shalom cut its expenses and receive your *Kibbitzer* sooner.



### Thank You.

Now when you shop at [smile.amazon.com](https://smile.amazon.com), your purchases will support Congregation Beth Shalom Of Brandon Inc.

[Change your charity](#)



Next, make it easy to return to [smile.amazon.com](https://smile.amazon.com).  
Install the AmazonSmile shortcut in your browser.

Install now for Internet Explorer

Share your support: [f](#) [t](#)

Dismiss



Congregation Beth Shalom is now participating in Amazon Smile — it's an easy way for CBS members, family and friends to support the temple. Simply use the following link:

<http://smile.amazon.com/ch/59-3026396> and shop, shop, shop!

## JOIN US

Become a CBS member at  
<https://bethshalom-brandon.org/wp-content/uploads/sites/173/2020/06/Membership-Application-2020-2021-2.pdf>



FOLLOW US ON TWITTER  
[@CBSBrandon](#)

FOLLOW US ON INSTAGRAM  
[@cbsbrandon](#)



### CBS ON FACEBOOK

- Congregation Beth Shalom
- Congregation Beth Shalom of Brandon Religious School Parent Association
- BESTY & BESTY Jr. Parents
- Congregation Beth Shalom of Brandon



# June 2021

**Sun Mon Tue Wed Thu Fri Sat**

	31 Memorial Day	1 7pm Board Meeting	2 Men's Club	3	4 7:30 pm Erev Shabbat Service	5
6	7	8 7:30 pm Adult Education	9 6:30 pm Healing Circle	10	11 7:30 pm Erev Shabbat Service Kibbitzer Deadline	
13	14	15 7:30 pm Adult Education	16	17	18 7:30 pm Erev Shabbat Service	19
20 Father's Day	21	22	23	24	25 7:30 pm Erev Shabbat Service	26
27	28	29 6:30 pm Executive Committee	30	1	2 7:30 pm Erev Shabbat Service	3

---

### ***Inside Scoop***

<i><b>Membership</b></i>	<i><b>3</b></i>
<i><b>Special Recognitions</b></i>	<i><b>4</b></i>
<i><b>Dinner With The Tribe</b></i>	<i><b>4</b></i>
<i><b>Social Action</b></i>	<i><b>6</b></i>
<i><b>Ladies Night In</b></i>	<i><b>7</b></i>
<i><b>Religious School</b></i>	<i><b>9</b></i>
<i><b>Calendar</b></i>	<i><b>15</b></i>

**We Do Things Better  
When We Do Them Together.**