

The Kibbitzer

Congregation Beth Shalom

706 Bryan Road, Brandon, FL 33511

Phone (813) 681-6547

www.BethShalom-Brandon.org

As of presstime, CBS will be live-streaming most events due to COVID-19. Please check the eblast for the most current information and details.

January 2021 Volume 31, Issue 8

Rabbi

Paul Schreiber

Reb Tuviah 813-681-6547

Cantorial Soloist

Sandy Santucci 813-681-6547

Executive Board:

President

Gerry Pliner 856-816-2178

Past President

Jon Ellis 813-240-4078

1st VP

Gerry Pliner 856-816-2178

2nd VP

Toby Koch 813-654-0877

3rd VP

Sheryl Finke 813-380-3880

Treasurer

Suzie Baylis 808-561-8130

Secretary

Michael Lubin 813-362-1367

Members at Large

Mitch Baylis 808-561-8130

David Friedman 813-417-3088

Lea Garbett 813-672-9383

Gabriel Lifschitz 571-277-1416

Caren Magdovitz 813-389-9613

Murray Dimant 774-526-2008

FROM THE RABBI - Rabbi Paul Schreiber, Reb Tuviah

A New Year's Resolution!

January always brings with it a sense of newness. We're turning the calendar and writing "2021" on our documents. I saw a clever post the other day: "May your joy last longer than your New Year's resolutions." They say, "Nothing succeeds like success"; progress inspires and motivates. Of course, that also means nothing is more discouraging than when we fall short. It's often quite easy to measure how well we've lived up to our goals, because there is a number attached: pounds lost, days at the gym, new friends made, clients engaged, money invested, etc. Perhaps, if we were to find success in some of the less tangible goals, it would brighten the year in a different way.



While I think of myself as a positive person, hardly a day goes by when I can't find some kind of complaint. Bothersome, annoying things stand out and sometimes can ruin otherwise wonderful experiences. I know thinking more positively will add to my happiness. If more of us looked first for what's going right than what's going wrong, we would all be happier. Not only would we feel better inside, but more people would be inspired to also see the good side of things. Complaining, we know, can be contagious; so can compliments.

I sometimes wonder if people would feel better about religion if the terminology didn't seem so restrictive. The Ten Commandments, our most recognizable teaching, are filled with "don'ts" and "Thou Shalt Nots" (especially the second five). What if the last five of the Ten Commandments emphasized what to DO rather than what NOT to do? For instance:

- 6] "Thou Shalt Not Commit Murder" could be ... "Honor and Respect Human Life"
- 7] "Thou Shalt Not Commit Adultery" could be ... "Be Faithful to Your Promises"
- 8] "Thou Shalt Not Steal" could be ... "Respect Other People's Property"
- 9] "Thou Shalt Not Bear False Witness" could be ... "Be Truthful"
- 10] "Thou Shalt Not Covet" could be ... "Be Happy With What You Have"

Many find the last commandment the most difficult because it legislates a feeling: jealousy. Our Talmudic sages in Pirkei Avot 4:1 address that by saying "Who is rich? The one who is happy with his lot." From the time we left Egypt and were called by God "a stiff-necked people," we've certainly been used to complaining. But the New Year gives us an opportunity to think differently. I believe when we replace complaining with positive thinking, it will make a difference to us and those around us. Am I sure? I'm positive!

And so, as the month of Kislev and the festival of lights are behind us, let us not allow that light to diminish. Actually, there is great symbolism in the Chanukah menorah as we begin the new year. What's the symbolism? As we leave 2020 (and what a year it's been!) and head into the new year of 2021, let us find new ways to share the light of Judaism with all we come in contact with; family, friends... even strangers we meet in our daily walk. Nancy and I wish you a most healthy and joyous new year!

*L' shalom,
Reb Tuviah*

FROM THE 2ND VICE PRESIDENT - *Toby Koch*

Greetings everyone and Happy New Year. It goes without saying that we are all excited to see 2021. Think positive thoughts and they will all come true. I wish everyone a healthy and happy year.

In March of 2020 we were forced to close our doors and stop worship services in our sanctuary. So, what do you do on Friday nights? Do you go out to dinner? Do you go to the movies or a show? How about visiting friends and family? Maybe you just stay home and watch TV. I like to spend of my Friday evenings with Sandy Santucci. Sandy is one of the most positive people I know. Sandy has a stressful job, working at a children's clinic, yet every Shabbat she brings her energy and positive attitude to our services. She brings us joy by choosing songs and melodies to sing at our services. For the past 10 months we joined Sandy using technology, Zoom and Facebook. For a little over an hour each Friday night we connect with Sandy. Then Reb Tuviah joined us in July. He contributed his talents: his voice, his guitar playing and his knowledge of Judaism. Together they up lift us as individuals and as a group.

Many of you did not like looking at squares on a computer screen or an iPad; even though Sandy and Reb Tuviah worked hard to bring us together. Some of you wanted more. Following the CDC guidelines, we have to keep our doors closed. We found a way to connect with members that were looking for "in person" services. Starting Friday, Jan. 8, and every other Friday night following, we will be holding service in our backyard. CDC guidelines will be strictly followed. Masks are required. We will have a special parking area for those who wish to stay in their cars. Now you can enjoy Sandy's lovely voice in person and Reb Tuviah's rabbinic guidance. As long as the temperature is above 55 de-

grees, we can worship Shabbat together (bring a flashlight and a blanket). If you need transportation, please call the temple office at 813-681-6547.

We are supposed to social distance so you cannot go out to dinner or see a show or visit with friends but now you have two ways to enjoy Sandy and Reb Tuviah, either online or in our back yard. No excuses. I guarantee you will enjoy the services. I will be looking for you each Shabbat.



UNION FOR **MEMBER**
REFORM JUDAISM

האיחוד ליהדות רפורמית

SERVING REFORM CONGREGATIONS IN NORTH AMERICA

Congregation Beth Shalom provides a meaningful spiritual home for people of all ages and levels of knowledge, a place to learn and to question, a place to worship and to celebrate, and a place to find a community that cares.

We offer:

- ☆ **Friday worship services at 7:30 p.m.**
- ☆ **Religious school pre-k through 10th grade**
- ☆ **Complete B'nai Mitzvah preparation**
- ☆ **Youth group programming**
- ☆ **Adult Education classes**
- ☆ **Community-wide events, including Mitzvah Day**



ILENE R. SCHWARTZ
Realtor®
(813) 625-2942

ileneRschwartz@gmail.com
Fax: (813) 655-1057
www.realtorilene.com
316 E Bloomingdale Ave, Brandon, FL 33511

HomeXpress
Realty, Inc.



Each Office is Independently Owned And Operated



Upcoming Dates To Remember

- **Sunday, Jan 3, 1:30 p.m.:** Purim spiel tryouts. More information on page 5.
- **Wednesday, Jan 6:** Men's Club (tentative.)
- **Friday, Jan. 8, 7:30 p.m.:** Outdoor services on the back lawn. More information on page 5.
- **Tuesday, Jan. 12, 6:30 p.m.:** Ladies Night In. Details on page 5.
- **Thursday, Jan. 14, 6 p.m.:** Healing circle service. Details on page 10.
- **Monday, Jan 18, 7 p.m.:** Page Turners. More information on page 8.
- **Friday, Jan. 22, 7:30 p.m.:** Outdoor services on the back lawn. More information on page 5.
- **Saturday, Jan. 20, 7:30 p.m.:** Dinner With the Tribe. More information on page 4.
- **Friday, Feb. 5, 7:30 p.m.:** Outdoor services on the back lawn. More information on page 5.
- **Tuesday, Feb. 9, 6:30 p.m.:** Ladies Night In. Details on page 5.
- **Friday, Feb. 19, 7:30 p.m.:** Outdoor services on the back lawn. More information on page 5.
- **Saturday, Feb. 27:** Purim spiel performance. More information on page 5.
- **Friday, March 5, 7:30 p.m.:** Outdoor services on the back lawn. More information on page 5.
- **Tuesday, March 9, 6:30 p.m.:** Ladies Night In. Details on page 5.

Due to COVID-19, please check the eblast for the most current information and details on all our events.



BEN FERNANDES & KEITH BALOT
OWNERS

phone: 813.657.6200
fax: 813.413.2045
Keith@krkvalrico.com.

4321 Lynx Paw Trail
Valrico, FL 33596
Ben@krkvalrico.com

www.krkvalrico.com

January Oneg Schedule

There can be no joy without food and drink. — Talmud, Mo'ed Katan

We hope you and your family are doing well.

The Oneg Committee has not scheduled oneg hosts for the month of January.

Since the temple has been closed for more than three months, we are waiting for our executive board to notify us as soon as they are able to determine at which time they feel it is safe to re-open the synagogue.

We are considering a plan to have "virtual oneg hosts." Please let us know if you are interested in this opportunity to honor a special person or date in your life.

If you have any questions or are interested in hosting an oneg, please contact us (Judith 856-816-2174, and Anna 707-628-5399).

Anna Feldman & Judith Pliner

The Kibbitzer

Volume 31, Issue 8
Published Monthly by
Congregation Beth Shalom
706 Bryan Road
Brandon, FL 33511
Phone 813-681-6547
Email: cbs-admin@hotmail.com

Email and articles for publication:
TheKibbitzer@hotmail.com
For current news and events
see the congregation's website:
<http://www.bethshalom-brandon.org>

Congregation Contacts

813-681-6547 • cbs-admin@hotmail.com

Office hours:

By appointment.
Voicemails and emails will be monitored daily.
Office is closed on holidays

Weekly Email Blast submissions

bethshalominfo@gmail.com
eBlast deadline is Wednesday at 4 p.m.

RITUAL — Michael Lubin

Outdoor Services Beginning

Beginning in January, Congregation Beth Shalom is please to announce we will be holding two outdoor services per month.

Join us Friday, Jan. 8, and Friday, Jan. 22, for Shabbat on the back lawn. Services begin promptly at 7:30 p.m. Please arrive by 7:15 p.m. for parking.

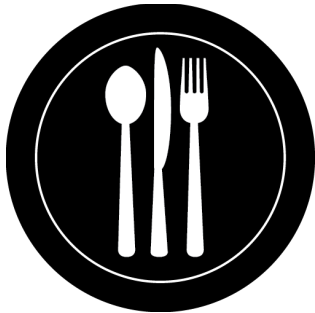
We will have a special section for those who prefer to stay in their vehicle during the service.

All services will be weather permitting. Please contact Michael Lubin at (813) 362-1367 if you have any questions.

The ritual committee meets the last Wednesday every month at 6:30 p.m. Please contact Michael Lubin at mike.8.11.2007@gmail.com for a link or more information.



DINNER WITH THE TRIBE — Anita Clifford



**.Saturday, Jan. 30
7:30 p.m.**

Grab a glass of wine, have some dessert, and schmooze with friends.

Save the date for our first virtual Dinner With the Tribe of 2021.
Tell us about your New Year's celebration this year.
Stay healthy and be well.

Anita Clifford
niewdnarb@yahoo.com

SOCIAL ACTION — Judith Pliner

Our community food pantry is open for all in need. If you or someone you know needs help, please contact Judith Pliner at gp@pliner-inc.com or Suzie Baylis at all4suzie@gmail.com.

We are currently seeking donations of the following for our pantry:

- bar soap
- body wash
- laundry detergent
- feminine hygiene products
- kid's cereals
- spaghetti sauce
- toilet paper

If you would like to donate any of these items, please contact us. Thank you.

The Social Action Committee

Committees/Chairpersons

Building/Capital Fund

Peter Jacobson

Caring

Christine Stockelman, Anna Feldman

Finance*

Gerald Pliner

Fundraising*

Mitch & Suzie Baylis

Life Long Learning*

Janice Perelman

Strategic Planning*

Steve Feldman

Membership*

Sandee Pelk, Lea Garbett

Retention

Judith Pliner

Oneg

Anna Feldman, Judith Pliner

Publicity

Toby Koch

Ritual*

Michael Lubin

Facility and Safety

Marvin Shienbaum, Gabe Lifschitz

Social Action*

Judith Pliner

Religious School*

Reb Tuviah

BESTY—Youth Group*

open

** Ex-officio voting board member
(each committee only gets one vote)*

Other Programs

CBS Singles Over 50

Anita Clifford

Chavurah

Anita Clifford

Dinner With the Tribe

Anita Clifford

Interfaith/Outreach

Sheila Slavkin

Kibbitzer Editor

Lea Garbett

Kolot Shalom — Choir

open

Library

Sandy Saviet

Men's Club

Seth Dugan

Page Turners

Anita Clifford

Web Administrator

Toby Koch

Join with CBS in offering congratulations and recognition to the following members on their accomplishments:

KUDOS

- Kudos to all who attended the holiday vendor fair to support our congregation and area businesses.
- Kudos to **Rachel and Jimmy Duncan** for finding a file cabinet to be donated for our congregation office.
- Kudos to **Suzie Baylis** for graciously opening up her home for the religious school Hanukah celebration. And kudos to **Cheryl Lubin** and **Suzie Baylis** for sponsoring and organizing the event. The children made menorahs, chocolate treats, played bingo, the giant dreidel game, and worked on crosswords.
- Kudos to **Suzie Baylis** and **the ritual committee** for planning our Veteran's Day Shabbat Service.



Do you know a CBS member who should be congratulated for a special accomplishment? If so, email the name and accomplishment to cbs-admin@hotmail.com.

Ladies Night In

Enjoy a virtual night out with the ladies of CBS!

2nd Tuesday of each month

6:30pm

Join us for a Zoom get-together
to connect with friends near & far.

January 12
February 9
March 9

Zoom link will be posted on the CBS Facebook page

Sandee Pelk // sandeepelk@verizon.net // 813.390.5056

MEMBERSHIP

The membership committee would like to wish all of our Congregation Beth Shalom families a happy, healthy 2021.

Please reach out to us if you have any friends or neighbors who would like more information or are interested in joining our temple.

– Sandee Pelk & Lea Garbett



Calling all Players and Set Designers

Sunday, Jan. 3, from 12 noon until 1:30 p.m. Congregation Beth Shalom will host tryout for the annual Purim Spiel. This year's theme "The Jungle Book," will be directed by Michael Lubin. Practice will follow every Sunday from noon to 2:30 p.m. beginning Sunday, Jan. 10.



Please contact Michael Lubin at (813) 362-1367 for more information.

JEWISH COOKING

Wake-Up Chocolate Fruit Kicks

By Deborah R. Prinz

As posted on www.ReformJudiiasm.org

These energizing chocolate chunks have a kick to them! These chocolate-coated dried fruit chunks celebrate the seven species of the land of Israel – two grains and five fruits. This recipe uses six of those foods.

Hiker Steve Rock concocted these easy-to-make, healthy treats for starting the day in the outdoors. He cautions that they'll "kick you down the trail a bit."

INGREDIENTS

1 pound dark chocolate, chips or broken into pieces
1 cup almonds
½ cup raisins, dates, figs, pomegranate, and/or other dried fruit
⅛ cup coffee beans
2 teaspoons cayenne pepper, to taste
½ cup unsweetened cocoa powder
Wheat cereal, barley cereal, granola, oatmeal, or other cereal (optional)

DIRECTIONS

- Line a large baking sheet with parchment paper, aluminum foil, or waxed paper. Melt the chocolate in a large heatproof bowl set over a pan of simmering water. Remove from the heat.
- In a food processor with the chop blade, combine the almonds, raisins, coffee beans, and cayenne. Pulse until coarsely chopped.
- Stir the cocoa into the melted chocolate. Once the mixture is even and getting stiff, add the chopped nuts and fruits; keep stirring. Taste to check the spice level.
- If the mixture is too moist and sticky, add more nuts, granola, or chopped cereal, or wait until firm enough to handle. [Note: Cooling in the refrigerator will firm the mixture faster.]
- Roll the mixture into balls and place on the prepared baking sheet. Cool completely. Dust with cocoa powder or roll in cocoa nibs. Remove from the baking sheet and store in a covered container.

Yield: Approximately 20 chunks

Reprinted with permission from *On the Chocolate Trail: A Delicious Adventure Connecting Jews, Religions, History, Travel, Rituals and Recipes to the Magic of Cacao* (2nd Edition) by Rabbi Deborah R. Prinz.

Rabbi Deborah R. Prinz speaks about chocolate and Jews around the world. The newly released 2nd Edition of her book, *On the Chocolate Trail: A Delicious Adventure Connecting Jews, Religions, History, Travel, Rituals and Reci-*



pes to the Magic of Cacao, (Jewish Lights) contains 25 historical and contemporary recipes. She blogs at *The Forward*, *The Huffington Post* and www.onthechocolatetrail.org. The book is used in adult study, classroom settings, book clubs and chocolate tastings

A promotional graphic for the Jewish Educational Loan Fund (JELF). It features a blue background with handwritten-style text in orange, green, and white. The text includes "Jewish? Need College \$?", "Tip JELF provides interest-free, last dollar loans for higher ed.", "Apply MAR 1 THROUGH APR 30 SEPT 1 THROUGH SEPT 30", "LEARN MORE AT JELF.ORG", and "Help us help you!". There is also a small icon of a graduation cap.

HIGH HOLIDAYS

High Holiday Appeal Drive Ongoing Thru January

Our annual High Holiday pledge drive is ongoing.

Our annual High Holiday appeal is a vital component in supporting Congregation Beth Shalom and its mission to provide a historic center of Jewish Life serving Eastern Hillsborough County.

This past year we have been financially challenged by the cost of our new roof and COVID-19, and we need your help.

A few anonymous donors have already stepped up. They have agreed to match dollar for dollar every amount pledged in this year's Kol Nidre Appeal up to \$15,000. If you have not made a meaningful pledge, please consider making one, and if you have already made your pledge

We are still also accepting donations for our congregation food bank. Please bring your non-perishable items or pet food to Simchat Torah or Sukkot, or call the temple office to arrange a time to drop off your items.

please give some thought to increasing it.

Every dollar pledged will raise two dollars toward our \$30,000 goal. You can click here to donate <https://secure.acceptiva.com/?cst=4w4Z6D>.

Thank you for your support.

COLLEGE CONNECTION

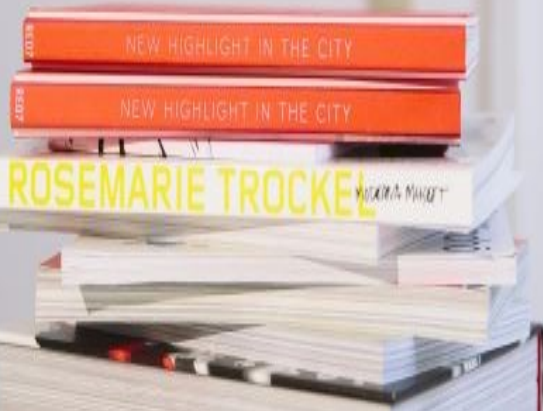
Congregation Beth Shalom wants to wish all of our college students a successful year!

Whether this is their first year away from home or they are ready to graduate, CBS wants our college students to know we are thinking of them throughout the year.

College Connection is open to all former and current members with students 18-23 years old.

To participate, please complete the form below for each college-age student in your family and email it to CBSMembership@hotmail.com.

https://docs.google.com/document/d/1_38Jn-hIU3_bHJzFjuMSKPdpHQM_1D6gH-UqE8d44vo/edit



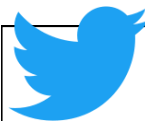
A Note About Pastoral Care

Reb Tuviah wants to know when congregants are in need of pastoral care.



This includes but is not limited to: when our congregants or their family members are in the hospital, recently lost a loved one, or otherwise may need his support.

If you hear about a congregant in need, please contact Reb Tuviah directly at rebtuviah@gmail.com



FOLLOW US ON TWITTER
@CBSBrandon

FOLLOW US ON INSTAGRAM
@cbsbrandon



LIFELONG LEARNING — Janice Perelman

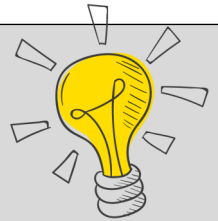


Yes, you're correct in observing that things have been slower than usual in Lifelong Learning at Congregation Beth Shalom. The highlight of the fall and early winter has been Reb Tuvia's wonderful Midrash presentations and the discussions they have evoked from the participants. I for one had not been educated in the source of Mid-

rash, tales and explanations of Torah, which provide so many possibilities and supplemental historical happenings.

As the coronavirus vaccine approaches reality and distribution, I hope that we will be able to provide educational opportunities in a real live setting. Meantime, we are in the process of organizing zoom cooking classes. So please bear with us as we segue back into normalcy.

The Lifelong Learning Committee currently consists of the following members: Sheryl Finke, Steven Feldman, Gerald Pliner, Caren Magdovitz, Anita Clifford, and Christine Stockelman. Please feel free to add your name to this list. To join, please write to chinadolljp@verizon.net or call (813) 748-8042.



We always welcome your suggestions for occasions to learn together. Feel free to contact me at chinadolljp@verizon.net or (813) 748-8042.

Janice Perelman
Chairperson, Life Long Learning

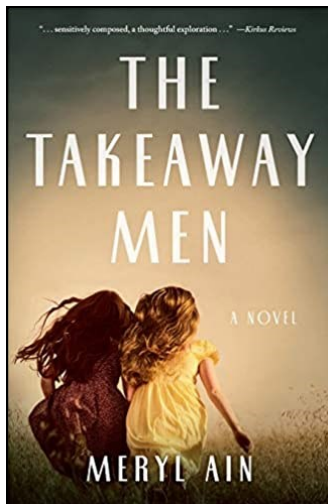
PAGE TURNERS

Monday, Jan. 18, at 7 p.m., Page Turners will meet to discuss *The Takeaway Men* by Meryl Ain.

With the cloud of the Holocaust still looming over them, twin sisters Bronka and Johanna Lubinski and their parents arrive in the U.S. from a Displaced Persons Camp. In the years after World War II, they experience the difficulties of adjusting to American culture as well as the burgeoning fear of the Cold War. Years later, the discovery of a former Nazi hiding in their community brings the Holocaust out of the shadows. As the girls get older, they start to wonder about their parents' pasts, and they begin to demand answers. But it soon becomes clear that those memories will be more difficult and painful to uncover than they could have anticipated.

Poignant and haunting, *The Takeaway Men* explores the impact of immigration, identity, prejudice, secrets, and lies on parents and children in mid-Twentieth-Century America.

Watch the eBlast for a Zoom link for this event.



*Improving the health
of women every day.*

Our Doctors:

Stephen Zweibach, MD
Natasha Champion, MD
Mariel Rotundo-Patino, DO

Now Accepting:
Tricare Members



Our Services:

- Gynecology & Obstetrics
- Bladder Problems
- Bleeding & Pain Problems
- Weight Management
- Botox

Women's Care Florida offers obstetrics and gynecologic care for women through all phases of life, from your pre-teen years to post-menopausal years.
Call today to schedule an appointment!



515 S. Kings Ave., Suite 1300 • Brandon, FL
13148 Vail Ridge Dr., • Riverview, FL

813.571.2777 Se Habla Espanol



EDUCATION

CBS Adult Education

Are You Smarter Than a Hebrew Schooler Level 1, 2, and 3?

This eight-week course is only \$18!

We will be meeting in person and at the congregation. Day and times will be announced after CBS reopens our doors.

Sign up by contacting Jenny, our CBS administrator. You can reach the temple office at 813-681-6547 or email cbs-admin@hotmail.com.

We are so excited to begin another school year at Congregation Beth Shalom and we hope the children are just as excited! Our religious school will meet on Sundays at 10 a.m.

For now, and in the interest of everyone's safety, we will be meeting virtually via Zoom. Let's get ready for a great year at CBS!

If you are interested in enrolling your child in our religious school program, please contact Reb Tuviah directly at rebtuviah@gmail.com.

Due to COVID-19, please check the eblast for the most current information and details.

Bar/Bat Mitzvah Information

TUTORING: Bar/Bat Mitzvah tutoring is available. Contact Reb Tuviah to make an appointment and set a date. Michael Lubin is available for all your tutoring requests.



ANNOUNCEMENTS: If you would like to have information on your child's upcoming Bar or Bat Mitzvah listed in *The Kibbitzer*, please submit an article and picture (digital if possible) to thekibbitzer@hotmail.com by the second Friday of the month prior to your service.

CONFIRMATION

Calling all teens who want to continue to explore their growth and knowledge of Judaism, Jewish thought, and Jewish life!

Plans are now under way with Reb Tuviah to meet with our confirmation students, youth group members, and any interested teens ages 13-16 effective with the 2020-21 school year. We are considering meeting monthly, but no specific dates have been identified.

Topics being considered for these meetings could include:

- how to address modern issues within the text of Jewish law,
- ethical practices,
- the place of Israel in our lives,
- anti-Semitism and racism, and
- other religions.



However, we welcome any suggestions from our youth or their parents.

With your help, the curriculum can be exciting and interesting –and we hope to provide further conversations within families about Judaism and Jewish life.

If you have any suggestions for this program, please reach out to Reb Tuviah at rebtuviah@gmail.com or the temple office.

CBS ON FACEBOOK



- Congregation Beth Shalom
- Congregation Beth Shalom of Brandon Religious School Parent Association

- BESTY & BESTY Jr. Parents
- Congregation Beth Shalom of Brandon

CONGREGATION COVID-19 DONATION DRIVE

By Mitch Baylis, Fundraising and Toby Koch 2nd VP

Uncle Sam has given most Americans another COVID-19 relief gift. Most of us have already received the direct deposit into our bank accounts. Thank you, Uncle Sam.

During this pandemic, your Congregation Beth Shalom family has been steadily providing help to many of our members and even non-members. We recently helped a mother and her son. She was given food, told how to get clothing for her son and most of all we gave her friendly support. We don't just provide help several times a year, we provide support and care all year long.

Whether it is handing out food from our pantry or a call of comfort from Reb Tuviah, CBS provides care for our community 24/7. From the first days of the pandemic nearly a year ago, we have gone shopping for members, we have de-

livered needed supplies to those who are home bound, and we improved our ability to provide religious services and Jewish learning safely in our own homes.

WHETHER OR not you receive a stimulus check from the government, we suggest a small donation to support CBS. Any amount is appreciated. As a special incentive, the first 20 members who donate \$118 or more to our CBS COVID-19 donation drive will receive a special Judaic gift hand-made in Israel as a show of appreciation. This gift is individually made exclusively for CBS from silver and 2,000-year-old Roman glass. Each one will have a certificate of authenticity. This rare and unique piece of Jewish history is our way to show appreciation for your support. We hope it will share a special place in your home as CBS shares a special place in your heart. We will be adding some pictures of the gift on our Facebook page. You can donate using this link at <https://secure.acceptiva.com/?cst=4w4Z6D>.



Jewish Healing Circle

As humans, we are all in need of healing.

As friends, caregivers, family members, and planetary citizens, we can pray for ourselves and all those in need of healing.

Let us come together to form a healing community through prayer, reflection and song in our tradition.

Thursday, Jan. 14th at 6:00pm
A link will be emailed to all members and friends.

Please join Reb Tuviah and special guest
Sue Gurland for an evening of "Healing Through Song & Chant."

Now more than ever,
we need to find that space of healing...
for ourselves, for our country and for our planet.



Your 100% Satisfaction is Absolutely
Guaranteed !

Clarke Automotive Systems

*If you have a problem with your car, let us give you our honest, expert
& straightforward advice so the job is done right—the first time !*

Bob Clarke
(813) 685-2939

131 Central Ave
Brandon, FL 33510

Doogie Entertainment

DJ and Party Services

Weddings
Bar/Bat Mitzvahs
Children's parties
80's & 90's video parties
Office Parties
PA system rental/set-up



Phone: 813-400-3609
www.DoogieEntertainment.com
E-mail: Doogie@DoogieEntertainment.com

Pleased to offer a 10% discount on services to members of Congregation Beth Shalom

THANK YOU TO OUR HIGH HOLY DAYS BRIDGE BUILDERS 5781

BONIM BRIDGE ☆ \$3,600—\$7,500

- (1) Anonymous
- (2) Anonymous
- (3) Anonymous

MITZVAH BRIDGE ☆ \$360 - \$1,799

Mitchell & Suzie Baylis
Steve Billor
Anita Clifford
Caren Magdovitz
Stephen & Anna Feldman
Carol Roberts
Bruce & Janice Sperry
Allan & Denise Weber
Alan Weiss & Toby Koch
Michael & Gail Verlin
Neal & Janet Kavesh

CHAI BRIDGE ☆ \$180 - 359

Jon & Isabell Ellis
Randy & Danita Freedman
David & Carol Anne Friedman
Michael & Lea Garbett
Margaret Khan
Brian & Arlene Salter
Nathan & Fruma Tanzer

CHAVERIM BRIDGE ☆ \$36 - 179

Joan Frankel
Meral Ginsberg
Barbara Glaser
Michael & Cheryl Lubin
Maria Miranda
Mags Oldman
Janice Perelman
Joe & Carol Plesur
Sue Reckner
Arleen Sanders
Howard & Sandy Saviet

The High Holy Day Appeal for 5781 is open through the end of January 2021. To make a contribution, please contact the office. This does not include donations made through the Book of Remembrance or Adopt-a-Book Campaigns, nor does it include non-members. If there are any errors or omissions to this listing, please notify the office as well.

ROARING 20s GALA SPONSORS

When it's time to pick a vendor or hire a professional for services, keep in mind these generous businesses that support CBS. Thank you to the following businesses and friends for their participation in our Roaring 20s Gala.

SPONSORS

Segal Funeral Home
Colorado Health & Youth Dermatology
Hillsboro Memorial Funeral Home
St. Petersburg Opera Company
Stephen & Anna Feldman
Christopher Waite, DMD (Brandon Dental)
Zomesa
HUB
Keith Balot - Kids 'R' Kids
Mark & Sheryl Finke
Errol & Sheila Fishman
Diane & Peter Jacobson
Anonymous
Robert Clarke Industries
Allan & Denise Weber
Dave & Carol Anne Friedman
Gerry & Judith Pliner
Brandon Plastic Surgery
Advanced Oral Surgery of Tampa
Toby Koch & Allan Weiss
Dr. Stephen Zweibach -
Women's Health & Wellness
Gulfside Pool & Spa Inc.
Reed & Reed
Isabel & Jonathan Ellis
Danita & Randy Freedman
Jan & Bruce Sperry
Dr. Shawn & Sam Wallace
Melissa Golden
Meral Ginsberg
Joan Frankel
Mitch & Suzie Baylis
Steve & Sheila Slavkin
Dr. Jeremy Rogers - Florida ENT & Allergy
Gail & Michael Verlin

SPECIAL THANKS TO

David Morris, Entertainer
Brandon Elks Lodge
Blake Kennedy, Auctioneer
Mitch & Suzie Baylis and
our FUNdraising Committee

DONATIONS

Congregation Beth Shalom accepts donations for many purposes, with a variety of opportunities for donors to support the good works of the Temple. You may contact the office either by phone or email to make a contribution, or head to our website to make a secure online payment through a PayPal account or by using a credit card.

Funds:

- **General Fund** (unrestricted): An unrestricted gift to the General Fund allows the temple to use those funds wherever they may be needed most. This fund incorporates contributions received from our High Holy Day Appeal, Yahrzeit donations, Bricklets, Adopt-A-Book, Tree of Life (unless otherwise indicated) and other non-restricted gifts.
- **Building Fund:** A fund to ensure the continuing physical growth of our spiritual home. Intended for capital improvements and major building repairs.
- **Endowment Fund:** Gifts to this fund are placed in an investment account and temporarily restricted or can be defined/restricted by the donor. This fund ensures the future of our temple.
- **Religious School Scholarship Fund:** These funds will be made available to Religious School students who are in need of tuition assistance, as determined confidentially by the Treasurer.
- **Rabbi's Discretionary Fund:** a fund for assistance to families in need, scholarship assistance, interfaith council, Holocaust museum and other endeavors at the Rabbi's discretion.
- **Youth Group Fund:** a fund that supports the ongoing engagement of post b'nai mitzvah youth, providing meaningful and fun experiences for our teens, and keeping them connected to their Jewish community.

If you wish to designate a gift to a particular purpose, for example, Food Bank, Choir, Oneg, Social Action, etc., you may do so by noting as such on your payment method or with an accompanying note; otherwise, your gift will be used where it is needed most.

Opportunities:

- **Adopt-A-Book:** A dedication label will be placed in one of our prayer books, to commemorate a simcha or in honor or memory of a loved one for just \$54.
- **Bricklets:** For as little as \$9 you can send a Bricklet Card instead of buying a card for birthdays, condolences, etc. A Bricklet Card in your name will be sent to the person you wish stating that a donation has been made in his or her name to Beth Shalom to honor the occasion.
- **Tree of Life:** The Tree of Life is on the back wall of our Sanctuary. An engraved leaf or stone can commemorate many simchas, b'nai mitzvah, wedding, birth, graduations, etc. Leaves are \$180, and stones are \$1800.
- **Yahrzeit Plaque:** To honor the death of a loved one, you may purchase a plaque that will be cared for in perpetuity for \$350. The name of the deceased along with their date of death is included on the plaque.

*Unless otherwise noted by you, your gift will be acknowledged in The Kibbitzer the month following its receipt.
If your donation is incorrectly listed or omitted, please notify the temple office immediately.*

Donations listed below were received between November 16 and December 15.

GENERAL FUND

In Loving Memory of Richard Oldman
Lea & Michael Garbett
Stephen & Anna Feldman
Gerald & Judith Pliner

In Honor of Samantha Feldman and Ashby & Robert Fuerer for Their Birthdays
Stephen & Anna Feldman

In Loving Memory of Stephen Greenfield
Stephen & Anna Feldman

In Loving Memory of Berne Lubbone
Carole Plesur

In Loving Memory of Gertrude and Phillip Sklar
Carol Wagner

BRICKLET

In Honor of John Mistretta
Lois Mistretta

In Loving Memory of Harold Schindler
Brian & Arlene Slater





Anniversaries

1/5 Sandy & Lee Schwartz
1/25 Jerilyn & Murray Dimant
1/31 Isabel & Jonathan Ellis



Yahrzeits

1/1	Fred	Sklar	Cousin	of	Carol	Wagner
1/3	Anna	Pearlsten	Relative	of	Christina	Frye
1/4	David	Sanders	Step Father	of	Sheila	Slavkin
1/4	Tatyana	Gudz	Grandmother	of	Lana	Goldfarb
1/4	Marilyn	Kaplan Seidman	Mother	of	Susan	Reckner
1/5	David Jay	Olshina	Father	of	Jodi	Olshina-Quintanilla
1/6	Seth	Weiner	Friend	of	Errol	Fishman
1/6	Sidney	Seidman	Father	of	Susan	Reckner
1/7	Marilyn	Stockelman	Mother in Law	of	Christine	Stockelman
1/7	Virginia	Finke	Mother	of	Mark	Finke
1/8	Marilyn	Gordon	Mother	of	Jane	Hertzberg
1/9	Sally	Bloom	Mother	of	Gail	Verlin
1/9	Harvey	Jacobson	Brother	of	Peter	Jacobson
1/9	Lazar	Gold	Father	of	Marty	Gold
1/10	William David	Roberts	Father	of	Carol	Roberts
1/11	Louis	Verlin	Father in Law	of	Gail	Verlin
1/12	Aline	Brandwein	Mother	of	Anita	Clifford
1/12	Bob	Finkel	Cousein	of	Steve	Feldman
1/12	Aaron	Ferman	Grandfather	of	Joel	Edelson
1/13	Robert	Northrop	Father	of	Rob	Northrop
1/13	Elayne	Raiskin	Mother	of	David	Raiskin
1/14	Thomas J.	Schwab	Uncle	of	Carol	Hindin
1/15	Amada "Amy"	Ferman	Grandmother	of	Joel	Edelson
1/16	Myna	Kalbas	Mother	of	Bill	Kalbas
1/16	Rhoda	Warg	Mother	of	Suzie	Baylis
1/18	Selma	Sperry	Mother	of	Bruce	Sperry
1/20	David	Brill	Grandfather	of	Myron	Feldman
1/21	Lawrence	Gould	Brother	of	Sandra	Saviet
1/22	Betty	Schwab	Mother	of	Carol	Hindin
1/22	Samuel	Raiskin	Father	of	David	Raiskin
1/22	meyer	Bloom	Father	of	Gail	Verlin
1/24	Jack	Vandeventer	Step Father	of	Christina	Frye
1/24	Pearl	Brill	Grandmother	of	Myron	Feldman
1/24	Sol	Zweibach	Father	of	Stephen	Zweibach
1/24	Marshall	Goldberg	Son	of	Ruth	Goldberg
1/26	Solomon	Gudz	Grandfather	of	Lana	Goldfarb
1/27	Irving	Dinnerman	Father	of	Tammie	Hebert
1/29	Abraham	Levine	Father	of	Marcia	Weiner
1/29	Sarah	Cohen	Grandmother	of	Sandra	Roberts
1/29	Joseph	Licht	Father	of	Janet	Kavesh
1/30	Vivian	Kay	Grandmother	of	Iylene	Miller
1/31	Vincent	Garafola	Father	of	Christina	Frye
1/31	Florence	Workman	Mother	of	Anna	Feldman
1/31	Anna	Rogovin	Mother	of	Richard	Rogovin



Birthdays

1/1 Sophia Savitt
1/2 Jodi Olshina-Quintanilla
1/2 Shirley Ratner
1/3 Ben Miller
1/4 Sharon Aronson
1/12 Carol Wagner
1/13 Susan Reckner
1/17 Diane Jacobson
1/19 Danita Freedman
1/20 Christina Frye
1/23 Clara Barnett
1/24 Stephen Yavelow
1/30 Errol Fishman
1/31 Jacob Wyatt

Simchat Shabbat!

Come celebrate your birthday or anniversary with us! A special Shabbat service is held every month to honor all our joys for that month. For this month it will be:

Jan. 22

The dates listed for the Yahrzeits are adjusted yearly according to the Jewish Calendar and may not necessarily coincide with the common date of death. Names are read for Kaddish at the Shabbat before the actual date. If you would like to have the common date listed, please contact the temple office.

Want to advertise in *The Kibbitzer*?

Ad Size	Monthly Rate	10% Discounted (Annual only)
Bus. Card	\$20	\$216
1/4 page	\$40	\$432
1/2 page	\$50	\$540
Full page	\$75	\$810

Special rate for CBS Members — 10% off MONTHLY rate with 6-month commitment.

To reserve your place in the next issue, e-mail the temple office at cbs-admin@hotmail.com or call 813-681-6547.

Babysitters

Contact the temple office for a list of available babysitters. Contact information, qualifications and transportation details are available for each sitter. We will not publish information about our younger members online due to privacy concerns.



ATTENTION! We send *The Kibbitzer* out online. This change has been made to help decrease one of our expenses at Beth Shalom.

However, if you prefer receiving your *Kibbitzer* via the US Mail, please call the Temple at (813) 681-6547 or e-mail the Temple (cbs-admin@hotmail.com) to tell us you **do not** want to get your *Kibbitzer* online. Please help Beth Shalom cut its expenses and receive your *Kibbitzer* sooner.



Thank You.

Now when you shop at smile.amazon.com, your purchases will support Congregation Beth Shalom Of Brandon Inc.

[Change your charity](#)



Next, make it easy to return to smile.amazon.com.
Install the AmazonSmile shortcut in your browser.

Install now for Internet Explorer

Share your support: [f](#) [t](#)

Dismiss



Congregation Beth Shalom is now participating in Amazon Smile — it's an easy way for CBS members, family and friends to support the temple. Simply use the following link:

<http://smile.amazon.com/ch/59-3026396> and shop, shop, shop!

JOIN US

Become a CBS member at
<https://bethshalom-brandon.org/wp-content/uploads/sites/173/2020/06/Membership-Application-2020-2021-2.pdf>



FOLLOW US ON TWITTER
[@CBSBrandon](#)

FOLLOW US ON INSTAGRAM
[@cbsbrandon](#)



CBS ON FACEBOOK

- Congregation Beth Shalom
- Congregation Beth Shalom of Brandon Religious School Parent Association
- BESTY & BESTY Jr. Parents
- Congregation Beth Shalom of Brandon



Congregation Beth Shalom
of Brandon

January 2021

Sun	Mon	Tue	Wed	Thu	Fri	Sat
					1 7:30 PM Erev Shabbat Service	2
3 10:00 AM Religious School 1:30 PM Purim Spiel tryouts	4	5 Board Mtg	6 Men's Club	7 TRA Meeting @ Rodeph Sholom	8 7:30 PM Erev Shabbat Service outside on the lawn Kibbitzer Deadline	9
10 10:00 AM Religious School 12 PM Purim spiel practice	11	12 6:30 Ladies Night In	13	14 Fundraising Mtg	15 7:30 PM Erev Shabbat Shabbat Service	16
17 No Religious School 12 PM Purim spiel practice	18 Page Tuners 7PM MLK JR Day	19	20	21	22 7:30 PM Simcha Shabbat Service outside on the lawn	23
24 10 AM Religious School 12 PM Purim spiel practice 31 10 AM Religious School 12 PM Purim spiel practice	25	26	27 6:30 PM Ritual Mtg 6:30 PM LLL Mtg	28	29 7:30 PM Erev Shabbat Service	30 7:30 PM Dinner With The Tribe

Inside Scoop

<i>Dinner With The Tribe</i>	<i>4</i>
<i>Social Action</i>	<i>4</i>
<i>Membership</i>	<i>5</i>
<i>Life Long Learning</i>	<i>8</i>
<i>Page Turners</i>	<i>8</i>
<i>Religious School</i>	<i>9</i>
<i>Calendar</i>	<i>15</i>

**We Do Things Better
When We Do Them Together.**