

# The Kibbitzer

*Congregation Beth Shalom*

706 Bryan Road, Brandon, FL 33511

Phone (813) 681-6547

[www.BethShalom-Brandon.org](http://www.BethShalom-Brandon.org)

As of presstime, CBS will be live-streaming most events due to COVID-19. Please check the eblast for the most current information and details.

## June 2020 Volume 31, Issue 1

### **Rabbi**

Bryan Mann 681-6547

### **Administrative Director**

Jenny Allen 681-6547

### **Cantorial Soloist**

Sandy Santucci 681-6547

### **Executive Board:**

#### **President**

Jon Ellis 240-4078

#### **Past President**

David Friedman 417-3088

#### **1st VP: Beit K'Nesset**

##### **House of Meeting**

Gerry Pliner 436-0080

#### **2nd VP: Beit Am**

##### **House of People**

Toby Koch 654-0877

#### **3rd VP: Beit Kehillat**

##### **House of Community**

David Friedman 417-3088

#### **Treasurer**

Allan Weber 867-885-4806

#### **Secretary**

Sheila Fishman 833-7843

### **Members at Large**

Mitch Baylis 808-561-8130

Steve Slavkin 323-0541

Sheryl Finke 654-4142

Julie Enszer 530-4349

Lea Garbett 672-9383

Gabriel Lifschitz 571-277-1416

## FROM THE RABBI - Rabbi Bryan Mann

### **Saying Goodbye**

Dear Congregation Beth Shalom,

What an incredible two years it has been serving as your rabbi. You entrusted me to lead your services, teach you and your students, counsel you, lead end-of-life ceremonies for your loved ones, name your grandchildren, guide you in conversion, bless your homes, and so many other things.

When the Tree of Life Shooting in Pittsburgh, PA, happened, we came together to mourn, share our fears, and gather to sing songs of hope. During this pandemic, we have dreamed and created a virtual Jewish community together. You have entrusted me to guide you spiritually during these intense times of fear, uncertainty, and vulnerability.

We laughed together at Purim spiels, shared sweet stories and memories (as well as food) at onegs, we have sung, laughed, prayed, and grown together.

As I shared in my dvar at the annual meeting, "All I can say is I hope somewhere along the way, whether a conversation, a Shabbat service, a life-cycle event, a Purim spiel, a Shavuot sunrise service, a Taste of Tanakh, a Let's Chat, a one-on-one conversation I brought a little more meaning into your lives. A little more Jewish knowledge and experience. A little more ritual. It has been an honor to be your rabbi these last two years."

As of writing this, I cannot make any public announcements about what is next for me professionally, but I do know I will be moving out of Florida toward the end of June or beginning of July.

My last Shabbat service Friday June 19, and my final Let's Chat session will be Sunday June 21. Throughout this month there will be other opportunities to say goodbye, but in the event we do not get the chance to see each other before I leave let me just say once again thank you for entrusting me to serve as your rabbi.

Sincerely,  
Rabbi Bryan



For a complete list of celebrations and thanks to Rabbi Bryan, please see pages 8 and 10.

## FROM THE PRESIDENT - Jon Ellis

It has been a pleasure to serve as president of Congregation Beth Shalom this past year. It is with great confidence that I turn over this position to Steven Slavkin, whose term will begin on July 1. When I agreed to be president, it was conditioned on Shelia Fishman assisting me, attending meetings, etc. While I put in a number of hours, I know Shelia put in substantially more and for that, I want to give her special thanks. Her diligence, competency and love for Congregation Beth Shalom remains unsurpassed.

We are hopeful that all are making it through this pandemic. We are beginning to look at how to reopen the synagogue and have formed a committee to determine the best manner in which to proceed. We are reviewing the CDC guidelines and other governmental mandates, suggestions by the Tampa Rabbinical Association and actions being taken by other area synagogues. We know CBS provides both a spiritual and social center from a number of members and our physical closing has affected both. Notwithstanding, Shabbat and other services are proceeding forward, even while we are closed.

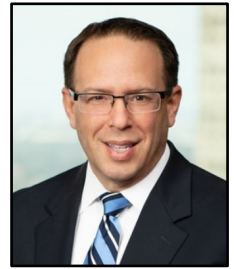
We have accomplished a lot this year. We have stemmed the loss of members and our membership remains in the low 80s. And while our members are committed, attracting back lost members and gaining new members has been a substantial problem. Increasing our membership will need to be the biggest priority for next year. Most importantly, we cannot look at membership and membership needs through our own eyes but through the eyes of younger families and those that have left. We need to strive to become a more thoughtful and caring congregation. This begins at the board level and must permeate all that we do.

Our finances are also not strong. And while we would have had a breakeven year had we not been hit with substantial building and grounds projects, we were. We are replacing the roof at substantial expense, in excess of the amount provided by insurance. We have had expenses related to trees in the back of the property and excessive water fees related to the sprinkler system. While none of this is exciting, they are critical expenses if we are to maintain our building.

This will be Rabbi Mann's last month with us. We were Rabbi Mann's first congregation after graduation. And while we do not yet know where Rabbi Mann will be next year, I do know he will be missed here. As president, I have had the pleasure of getting to know Rabbi Mann, working with Rabbi Mann and learning from Rabbi Mann. And for all of that, on behalf of Congregation Beth Shalom, I want to thank Rabbi Mann for all he has done while he has been here. Thank you!!! Announcements as to an appropriate goodbye to Rabbi Mann will be forthcoming shortly.

And as Rabbi Mann leaves, Rabbi Schreiber, will be joining us. Julie Enszer had been gracious enough to chair the Rabbi Transition Committee. Announcements will be forthcoming shortly. I do request each member work to meet Rabbi Schreiber and form a relationship with him. We look forward to this new chapter.

I do not believe you can be president of a congregation without offending a few. I want to take a moment and apologize to all that I may have offended during my presidency, especially those who I may have offended unknowingly. Normally I would do this during Yom Kippur, but my last column in *The Kibbitzer* is also an appropriate venue. Please accept my apologies.



... and lastly, THANK YOU. Thank you for allowing me to serve as president. Thank you for assisting me, thank you for what I have learned as president. And thank you for helping make me a better person. It has been an honor.



**Congregation Beth Shalom provides a meaningful spiritual home for people of all ages and levels of knowledge, a place to learn and to question, a place to worship and to celebrate, and a place to find a community that cares.**

### We offer:

- ✧ **Friday worship services at 7:30 p.m.**
- ✧ **Religious school pre-k through 10th grade**
- ✧ **Complete B'nai Mitzvah preparation**
- ✧ **Youth group programming**
- ✧ **Adult Education classes**
- ✧ **Community-wide events, including Mitzvah Day**

## Upcoming Dates To Remember

- **Saturday, June 6, 10 a.m.:** Taste of Tanakh, (Parshat Naso): The Priestly Blessing. More information on page 6.
- **Tuesday, June 9, 6:30 p.m.:** Ladies' Night Out. More details on page 8.
- **Monday, June 15, 7 p.m.:** Page Turners. For more information on page 9.
- **Friday, June 19, 7:30 p.m.:** "Drive In" Shabbat. Details on page 10.
- **Sunday, June 21, 3 p.m.:** Let's Chat! More information on page 6.
- **Monday, July 20, 7 p.m.:** Page Turners. More information on page 9.
- **Sunday, Aug. 9, 9:30 a.m.:** Congregation Beth Shalom open house.



*Religious Education Calendar, page 7;  
Full calendar, page 15*

**Due to COVID-19, please check the eblast for the most current information and details on all our events.**

## June Oneg Schedule

*There can be no joy without food and drink. — Talmud, Mo'ed Katan*

Should we still be live streaming services in June, oneg hosts will be contacted for hosting a future date.

• **June 5: Sheila & Steve Slavkin** have agreed to host the oneg in honor of their 23rd anniversary.

• **June 12: Lea & Mike Garbett** are hosting the oneg in honor of their son, **Jacob**, who will be celebrating his 16th birthday.

• **June 19:** The Ritual and Transitions Committees will host the oneg in honor of Rabbi Bryan's service and time at Congregation Beth Shalom.

• **June 26th:** This date is open.

Thanks to everyone who volunteered to be an oneg host!

If you have any questions or are interested in hosting an oneg, please contact us (Judith 856-816-2174, and Anna 707-628-5399).

Anna Feldman & Judith Pliner

## The Kibbitzer

Volume 31, Issue 1  
Published Monthly by  
Congregation Beth Shalom  
706 Bryan Road  
Brandon, FL 33511  
Phone 813-681-6547  
Email: cbs-admin@hotmail.com

Email and articles for publication:  
TheKibbitzer@hotmail.com  
For current news and events  
see the congregation's website:  
<http://www.bethshalom-brandon.org>  
\*\*\*\*\*

**Jenny Allen, Administrative Director**  
813-681-6547 • [cbs-admin@hotmail.com](mailto:cbs-admin@hotmail.com)

### Office hours:

subject to change without notice, please refer to eBlast  
Tues., Wed., and Friday: 9:30 a.m.—2:30 p.m.  
Voicemails and emails will be monitored daily.  
Office is closed on holidays

### Weekly Email Blast submissions

[bethshalominfo@gmail.com](mailto:bethshalominfo@gmail.com)  
eBlast deadline is Wednesday at 4 p.m.



Your 100% Satisfaction is Absolutely  
Guaranteed!

**Clarke Automotive Systems**

*If you have a problem with your car, let us give you our honest, expert  
& straightforward advice so the job is done right—the first time!*

**Bob Clarke**  
(813) 685-2939

**131 Central Ave**  
**Brandon, FL 33510**



## **Virtual Jewish Rituals, Learning, and Other Opportunities**

As we at Congregation Beth Shalom continue to work on our own virtual opportunities for ritual, learning and gathering we want to make sure you know about the plethora of opportunities from other places as well.

▪ **jewishLive:** <https://www.facebook.com/groups/jewishlivegroup> or <https://www.jewishlive.org/> is one of the best places to find daily services/meditation/singing geared both to adults and youth, Jewish learning opportunities and other ways to connect with Jewish life at home.

▪ **Sefarai:** <https://www.sefaria.org/texts> is a virtual Jewish library. It includes the full Tanakh (Hebrew Bible) and Babylonian Talmud with English translation. It has dedicated pages for the weekly torah portion, the daily page of Talmud (Daf Yomi), and other amazing resources.

▪ **BimBam (formerly Godcast):** <https://www.bimbam.com/> This is a great resource for youth/families and those interested in intro to Judaism resources. There are videos focusing on major holidays, themes, and Hebrew Bible stories. There is also a Jewish kids show called ShaBoom!

▪ **SVARA Daily Mishna at 1:30 p.m. (except for Shabbat):** <https://svara.org/drop-in-mishnah-chaburah-collective/>. SVARA, the folks who bring you Queer Talmud Camp, are offering a Daily Mishnah Chaburah (collective). It lasts for a half hour. You can drop in once, or drop in daily. This is taught by LGBTQ teachers with the aim of creating a learning community specifically by, for, and with LGBTQ Jews.

▪ **Jewish Women's Archive and jewishLive's Quarantine Book Club in Partnership Jewish Women's Archive:** [bit.ly/Jewishbooks](http://bit.ly/Jewishbooks) is a weekly virtual book club. In this time of predominately virtual Jewish life we invite you to check out these offerings along with the ones provided by Rabbi Bryan and the Congregation Beth Shalom community. We also remind you to check in on each other. You might take this opportunity to even study in virtual chevruta (pairs).

## **Committees/Chairpersons**

### **Building/Capital Fund**

Peter Jacobson

### **Caring**

Christine Stockelman

### **Finance\***

Allan Weber

### **Fundraising\***

Mitch & Suzie Baylis

### **Life Long Learning\***

Janice Perelman

### **Strategic Planning\***

Open

### **Membership\***

Gail Verlin, Judith Pliner

### **Oneg**

Anna Feldman, Judith Pliner, and

Sue Reckner

### **Publicity**

Andrea Chassen

### **Ritual\***

Steve Slavkin

### **Facility and Safety**

Mitch & Suzie Baylis

### **Social Action\***

open

### **Religious School\***

Sheila Fishman

### **BESTY—Youth Group\***

Advisor — open

President —open

*\* Ex-officio voting board member  
(each committee only gets one vote)*

## **Other Programs**

### **CBS Singles Over 50**

Anita Clifford

### **Chavurah**

Sheila Fishman

### **Dinner With the Tribe**

Anita Clifford

### **Interfaith/Outreach**

Sheila Slavkin

### **Kibbitzer Editor**

Lea Garbett

### **Kolot Shalom — Choir**

open

### **Library**

Sandy Saviet

David Richter

### **Men's Club**

Seth Dugan

### **Page Turners**

Sheila Fishman

### **Web Administrator**

Jenny Allen

## **A Note About Pastoral Care**

Rabbi Bryan wants to know when congregants are in need of pastoral care.

This includes but is not limited to: when our congregants or their family members are in the hospital, recently lost a loved one, or otherwise may need his support.

If you hear about a congregant in need, please contact Rabbi Bryan directly at [rabbibryanmann@gmail.com](mailto:rabbibryanmann@gmail.com) and/or 857 728 4792.



## **CBS FINANCIALS**

In an effort to be transparent to all of our congregants, Congregation Beth Shalom will be publishing its monthly financials for all to see, and they can be found in the link below.

<https://bethshalom-brandon.org/wp-content/uploads/sites/173/2020/05/CBS-May-2020-PL-vs-Budget.pdf>

With this transparency, we welcome all to note areas of need, and we welcome any suggestions or contributions to keep CBS on firm financial footing.



**Join with CBS in offering congratulations and recognition to the following members on their accomplishments:**



### MAZELS

- Mazel tov to high school graduates **Micah Dugan, Ari Cantrell, Clara Barnett, Kelsey Birnholz, and Ava Criden!**
- Mazel tov to all our **CBS students, educators, and families** for finishing the school year successfully and making it thru distance learning.

*Do you know a CBS member who should be congratulated for a special accomplishment? If so, email the name and accomplishment to [cbs-admin@hotmail.com](mailto:cbs-admin@hotmail.com).*

## Torah Readers Needed

There has been a changing of the guard ...

With the recent temple election, Steve Slavkin has been named president of the congregation. As such, he has stepped down as chair of the Ritual Committee, after serving for almost 5 years in that capacity. He did an amazing job during that time.

Sheila Fishman has now been appointed chair of that committee. Several members of that committee continue to serve, but we have so much work ahead of us. We need to address the departure of Rabbi Bryan who has served us well for the past two years, plan for the arrival of Reb Tuviah on July 1, and begin the work of orchestrating the High Holy Day services. All of these tasks take time and the help of many congregants. Additionally, we must learn to provide services and programming in a new environment. We must learn to work with new technologies as we determine how and when to reopen our temple in this new world.

We are also hoping that our previous Torah readers for the High Holy Days will, again read their portions with the upcoming holidays. However, we need additional readers. Whether you have done this in the past or wish to do so for the first time, we have a program in place to receive a small Torah portion and to study with Michael Lubin, a religious school teacher and Haftarah reader in advance of the High Holy Days.

If you are interested in serving on the Ritual Committee or to become a Torah reader, please contact Sheila Fishman at 813-833-7843, or [gold17@verizon.net](mailto:gold17@verizon.net).

## MEMBERSHIP

Summer starts the beginning of the Congregation Beth Shalom membership drive, culminating with our August open house event. The membership committee has several promotions and publicity to generate interest and welcome Rabbi Schreiber.



There is still opportunity to join the Membership Committee and share your ideas and experience to open CBS to the community at large.

We are continuing with our calls to congregants to just say hello and to see if we can help them with any unmet needs. If you are in need of food or supplies or know of any congregant in need please reach out to Judith Pliner at [gp@pliner-inc.com](mailto:gp@pliner-inc.com), or to Suzie Baylis at [all4suzie@gmail.com](mailto:all4suzie@gmail.com).

The membership committee

– Judith Pliner, Gail Verlin, and Sheryl Finke



**FOLLOW US ON  
TWITTER  
@CBSBrandon**

## LIFELONG LEARNING — Janice Perelman



• **Saturday, June 6, at 10 a.m.,** join us for Taste of Tanakh. (Parshat Naso): The Priestly Blessing Parshat Naso contains the words to the Priestly Blessing. We will look at the biblical context of the Priestly Blessing and look at how this blessing is used in many different Jewish rituals today.

• **Sunday, June 21, at 3 p.m.,** join us for Let's Chat! and a Memory Book and Presentation to Rabbi Mann. Rabbi Mann's last Let's Chat session will be Sunday, June 21, at 3 p.m. This celebration will be on Zoom (link will be distributed in the eblasts).

For a full list of goodbye activities and celebrations, please see page 10.

Let's Chat will be the very last event the rabbi does with Congregation Beth Shalom, so login and share a special memory and a special moment with Rabbi Mann before he leaves.

...

As a child, my mother described the influenza pandemic of 1918 as she experienced it. Never did I imagine I would live through a similar experience 102 years after she did. The world is now a foreign place, and I can liken it only to being in an aircraft, circling an airport in a holding pattern, waiting for the tower to give permission for us to land. So too our plans are on hold, waiting for the go-ahead signal to

### Are You Smarter Than a Hebrew Schooler Level 2?

We will be starting the next level of this special program soon.

Please contact the Jenny, our CBS administrator, if you would like to sign up. You can reach the temple office at 813-681-6547 or email [cbs-admin@hotmail.com](mailto:cbs-admin@hotmail.com).

### Doogie Entertainment

DJ and Party Services

Weddings  
Bar/Bat Mitzvahs  
Children's parties  
80's & 90's video parties  
Office Parties  
PA system rental/set-up



Phone: 813-400-3609

[www.DoogieEntertainment.com](http://www.DoogieEntertainment.com)

E-mail: [Doogie@DoogieEntertainment.com](mailto:Doogie@DoogieEntertainment.com)

Pleased to offer a 10% discount on services to members of Congregation Beth Shalom

**Due to COVID-19, please check the eblast for the most current information and details.**

plan for our future.

In spite of many changes at CBS and a reduction in membership, Lifelong Learning was able to sustain a meaningful series about aging issues, as well as a "Celebration of Goodness" by Howard Kerner, his second at CBS, to a sizeable number of participants.

If you are interested in helping to plan and enact meaningful learning experiences for our congregants, please join the Lifelong Learning committee and help. We can use ideas, suggestions, and assistance in order to make the 2020-21 congregational year one which will be interesting and vital. Simply call me at (813) 748-8042, or e-mail [chinadolljp@verizon.net](mailto:chinadolljp@verizon.net).

### Women's Health & Wellness Individualized OB/Gyn Care



- Better Care from Adolescent Age to Geriatric Age
- Fertility to In Office Birth Control Procedures
- Personalized One-on-One Care
- Outpatient Procedures with Little or No Downtime
- Weight-Loss Program
- 3-D & 4-D Ultrasound

Stephen Zweibach, M.D.  
Natasha Champion, M.D.  
Mariel Rotundo-Patino, D.O.  
Heidi DiSalvo, D.O.

#### 2 Locations to Serve You

815 S. Parsons Avenue, Brandon  
13148 Vail Ridge Drive, Riverview  
813-571-2777 [whnw.net](http://whnw.net)

**Se habla español**



## EDUCATION— Sheila Fishman

Our religious school year ended May 17, under unusual conditions. Onsite classes had been moved to online classes due to the COVID-19 pandemic. From April until the end of the school year, we regularly met via Zoom with Rabbi Bryan, Sandy and our teachers. Every effort was made to provide a Jewish education. However, we were limited in our ability to provide extensive Hebrew studies. Accordingly, over the summer, we will be offering study guides to each student and one-on-one instruction to enhance their Hebrew skills. More will be forthcoming over the next several weeks.

**Due to COVID-19, please check the eblast for the most current information and details.**

Now, I wish to thank you, the parents, for ensuring that your children joined us online. I want to thank our teachers, Anna Feldman, Christine Stockelman, Sandy Santucci, Rudina Richter, and Michael Lubin, for their knowledge, dedication and good deeds. Our assistant teacher, Davina Feldman, was so helpful throughout the year. And of course, a thank you to Rabbi Bryan for his insightful worship services, special programming, and online classes.

**Jewish? Need College \$?**

**Tip** JELF provides interest-free, last dollar loans for higher ed.

**Apply** MAR 1 THROUGH APR 30 SEPT 1 THROUGH SEPT 30

**LEARN MORE AT JELF.ORG**

**Help us help you!**

### BESTY BEAT

For more information about our Jewish youth group, please visit our congregation website at <https://bethshalom-brandon.org/community/youth/> or call the congregation office at 813-681-6547 and speak to our administrator.



Additionally, through the summer, I will be meeting with our incoming rabbi, Reb Tuviah, to discuss improvements to the religious school including curriculum enhancements. The rabbi, teachers and myself will meet to determine how we will proceed in the 2020-21 school year should the pandemic still be an issue. All safeguards will be put into place.

The Congregation Beth Shalom Open House is tentatively scheduled for Sunday, August 9, from 9:30 a.m. until noon. This will be the time to learn about the religious school for 2020-21, view our curriculum and textbooks, and meet the teachers. Our religious school classes are designed to meet the educational needs of children kindergarten through confirmation.

We are continuing with a once-a-week program beginning with Sunday, August 16, for all students. School hours continue to be 9:30a.m. until noon, and our day begins with our worship service at 9:30a.m. The service is followed by a 1- hour Hebrew class and 1- hour Judaica class. For kindergarten and 1st-grade students, the two hours following the worship service will follow a different pattern given the students' attention span. A calendar of classes will be available at the Open House.

Information regarding our Confirmation program will be forthcoming in future publications.

### Bar/Bat Mitzvah Listings

- If you would like to have information on your child's upcoming Bar or Bat Mitzvah listed in *The Kibbitzer*, please submit an article and picture (digital if possible) to [thekibbitzer@hotmail.com](mailto:thekibbitzer@hotmail.com) by the second Friday of the month prior to your service.



## A THANK YOU TO RABBI BRYAN MANN

Rabbi Bryan Mann became the senior rabbi at Congregation Beth Shalom of Brandon in August of 2018 and is now leaving to continue his spiritual leadership and growth.

When Rabbi Bryan arrived, he brought with him a youthful exuberance which was infectious throughout our congregational family. His love of Torah was quite evident, and he quickly established himself. He eagerly engaged the congregants on interpretations of scripture and opened our eyes to new views and alternatives which would challenge us to learn.



Upon his arrival, he began working closely with the lay leadership at Congregation Beth Shalom to prepare for the High Holy Days. He quickly adapted to the religious school setting and provided special programming and led the students in morning services, sharing the meaning of each prayer chanted.

Rabbi Bryan worked with students preparing for their bar and bat mitzvahs, watching their transition from childhood into young adults. During religious school, he presented the concept of tzedakah to students who prepared a thermometer for fundraising in preparation for the High Holidays.

Rabbi Bryan surprised many with his quick wit and humor, even stealing the show as a judge on our "CBS Got Talent" evenings and singing along to Purim songs set to the music of rock bands and Broadway shows. He even honed his investigative skills during our Murder Mystery Dinners.

Well known in the Tampa community, Rabbi Bryan was frequently requested to prepare thought-provoking articles for *The Jewish Press*, attend and lead several events in the area, and be a guest rabbi at several congregations.

Rabbi Bryan has developed informative and thought-provoking programming for our confirmation students. Additionally, he has provided educational opportunities for adults. His "Taste of Tanakh," "Let's Chat," and other programs were well received.

He has united our community while we celebrated baby namings and our departed members, family and friends. He has reached out to those who need healing spiritually, emotionally, and physically.

Most recently, Rabbi Bryan has been called on to lead us

### ***Contribute To Our Memory Book***

We are planning a congregational memory book to give to Rabbi Bryan as part of his farewell.

All congregants are encouraged to contribute a message for this book.

Please contribute any special experiences you have shared with the rabbi, including photographs you have with him. **The deadline for submissions is Monday, June 8.**

There are two ways to contribute:

- Email your story/experience/wishes. If you want to include a picture, please send them as a jpeg to [all4suzie@gmail.com](mailto:all4suzie@gmail.com)
- You can also provide a handwritten note, a poem and/or pictures. These can be dropped off at CBS. Please place in envelop with attention to Suzie Baylis (we can return pictures if you want them back.)

Please also comment on the ways in which rabbi strengthened your sense of Jewish affiliation and practice. Your contribution will be most warmly appreciated.

through a time never before experienced. The COVID-19 pandemic required a lock-down of our community and a new way of doing business. During this trying time, he has continued to reach out to congregants to offer solace and has introduced the congregants to online services and study sessions. Despite the challenges presented by only online communication, he has continued to meet with and provide weekly classes to our religious school students. We have remained united through this unusual time with the help of Rabbi Bryan.

We approached Rabbi Bryan to ask how we could thank him for leading our congregation through the past two years, and, in particular, the difficult times associated with the pandemic. Rabbi responded it has been his honor and joy to serve us and has asked that, in lieu of gifts, donations be made in his name to Congregation Beth Shalom.

We are asking our congregation family and the community to express their love and gratitude with a heartfelt donation. The first \$1,800 will go toward a custom brick on the Tree of Life that will honor his time with our Congregation and be an everlasting tribute to Rabbi Bryan Mann. Follow this link to contribute to this lasting gift. <https://secure.acceptiva.com/?cst=oLtJc2>



## DINNER WITH THE TRIBE — Anita Clifford

Ladies and Gentlemen,

With a note of caution, our Dinner With The Tribe has been postponed. We skew older, more likely to have problems if we come down with COVID-19. While some businesses have begun opening, in my opinion there's no use tempting fate while numbers are still rising. I'd rather see everyone next time happy and healthy!

Best,  
Anita Clifford  
[niewdnarb@yahoo.com](mailto:niewdnarb@yahoo.com)

## Ladies Night Out

2nd Tuesday of each month  
6:30pm

### Enjoy a night out with the ladies of CBS!

We will dine at local restaurants, attend cooking demos, get creative with art/craft classes, play bunco, enjoy pot luck dinners, and more!



**April 14      May 12      June 9**

Restaurants / activities will be announced  
in the weekly eblast.



RSVP by the Sunday prior:

<https://www.signupgenius.com/go/30E094BA5A62AA64-ladies>

<https://www.signupgenius.com/go/30e094ba5a62aa64-ladies>  
Sandeep Pelk // [sandeepelk@verizon.net](mailto:sandeepelk@verizon.net) // 813.390.5056

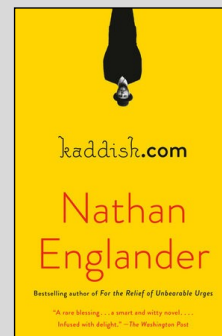
## PAGE TURNERS



• **Monday, June 15, at 7 p.m.,** Page Turners will meet to discuss our May book, *The Handmaid's Tale*. Since libraries were closed and many could not get a copy of the book, this is our rescheduled date. Thank you for your understanding.

• **Monday, July 20, at 7 p.m.,** please join us as Page Turners discusses *Kaddish.com*, by Nathan Englander

Larry is the secular son in a family of Orthodox Brooklyn Jews. When his father dies, it's his responsibility to recite the Kaddish every day for eleven months. To the horror and dismay of his sister, Larry, an atheist, refuses — imperiling the fate of his father's soul. To appease her, Larry hatches an ingenious if cynical plan, hiring a stranger through a website called kaddish.com to recite the prayer and shepherd his father's soul safely to rest but complications arise. This is a satire that touches lightly and with humor on the conflict between the religious and secular worlds. It is a novel about atonement, spiritual redemption and the temptations of the internet.



**ILENE R. SCHWARTZ**  
Realtor®  
(813) 625-2942

[ileneRschwartz@gmail.com](mailto:ileneRschwartz@gmail.com)

Fax: (813) 655-1057

[www.realtorilene.com](http://www.realtorilene.com)

316 E Bloomingdale Ave, Brandon, FL 33511

**HomeXpress**  
Realty, Inc.



Each Office is Independently Owned And Operated

## CBS ON FACEBOOK

Our congregation has a few places to find us on Facebook!  
All three of the following groups require approval to join:

- ✓ **Congregation Beth Shalom of Brandon**
- ✓ **Congregation Beth Shalom of Brandon Religious School Parent Association**
- ✓ **Youth Group**

Then there is our page:

**Congregation Beth Shalom of Brandon**  
that anyone can follow.

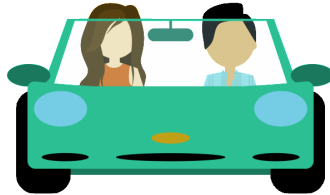


## WE SAY GOODBYE

### ***Say Goodbye at the “Drive In” Shabbat!***

**Friday, June 19, 7:30 p.m. (8:30 p.m.)**

Just because our moment calls for social distances, doesn't mean that we cannot be creative with saying goodbye to Rabbi Mann as he heads to his next life adventure. Congregation Beth Shalom will host a drive in shabbat Friday, June 19, for Rabbi Mann's final shabbat services at CBS.



Rabbi Mann and Sandy Santucci will be in the sanctuary broadcasting the shabbat service on zoom and Facebook. Folks can stream the services from their homes OR drive up to CBS and watch from their telephones in the parking lot, just like an old-fashioned drive in.

When services are over, socially distance “car hops” will bring you an individually wrapped challah roll and something sweet (also individually wrapped) for an oneg. Then sustained by bread and dessert, everyone present will line up and drive by and say goodbye to Rabbi Mann from their car, observing the very best social distancing practices while still getting a 6-foot face to face goodbye.

### ***Memory Book and Presentation***

**Sunday, June 21, 3 p.m.**

Rabbi Mann's last Let's Chat session will be Sunday, June 21, at 3 p.m. As of the newsletter deadline the plan is for the Let's Chat session to happen on zoom, but that will not hinder the further celebrations of Rabbi Mann as he departs. During the first 20 minutes of the Let's Chat session, Rabbi Mann will be presented with the memory book compiled by members of the congregation.

Join us for this celebration of Rabbi Mann at 3 p.m. on Zoom (link will be distributed in the eblasts). Let's Chat will be the very last event the rabbi does with Congregation Beth Shalom, so login and share a special memory and a special moment with Rabbi Mann before he leaves.

We hope you will join us for this special “Drive In” Shabbat on Friday, June 19, at 7:30 p.m., for services or 8:30 p.m. if you just want to do a drive by goodbye!

## WE SAY HELLO!

### ***Video Welcome for Reb Tuviah!***

The Rabbi Transition Task Force is spear-heading a welcome video compilation for Reb Tuviah for him to have an opportunity to “meet” and see all of the beautiful faces of Congregation Beth Shalom families.

Between now and Monday, June 15, wrangle together all of your family members to make a virtual greeting for Reb Tuviah using the video function of your phones! A brief video is fine, ideally 30 seconds to 3 minutes. In the video, introduce yourself and your family members and share one hope and one dream you have for Reb Tuviah at Con-

gregation Beth Shalom.

When you are done with the video, upload it to dropbox here: <https://www.dropbox.com/sh/trukbnpl5ryc9co/AAAACDBLZqBBlqq8imKGm4FWa?dl=0>

Mags Oldman will be compiling them into one large video to share with Reb Tuviah to welcome him to our congregational community!

Remember, **Monday, June 15, is the deadline**, so start filming now!

## THE LIBRARY CORNER — Sandy Saviet & David Richter

Though our temple library was closed in April, thank you to those of you who contributed books in early and late March. We do ask that when you contribute books to our library, you leave a note as to who contributed so that you may receive a personal acknowledgment. We hope the library will reopen soon. I am currently reading *The Jew Store* by Stella

Suberman. I am finding it very insightful as to what my paternal grandparents may have experienced in the early 20th century when they owned a small department store in Beloit, Wisconsin. Stay safe and well.

- Sandy

**The ESCAPE ROOMS that COME TO YOU!**

ADULTS & KIDS GAMES HIGH TECH DEVICES IN-GAME HOST SPECIAL EFFECTS

**HAUNTED HURRICANE BEACH HOUSE**

**THE GREEN ROOM**

**Serving Most of Florida**  
1/3<sup>rd</sup> the price of avg. esc. rooms

**The Ultimate Team Building Experience**  
All we need is 300sf of space...any room to set up  
Offices - Home - Schools - Hotels - Clubhouse  
[PuzzleRoomEscape.com](http://PuzzleRoomEscape.com) Call 754-252-3477

**Kids R Kids**  
Learning Academy

**BEN FERNANDES & KEITH BALOT**  
OWNERS

phone: 813.657.6200  
fax: 813.413.2045  
Keith@krkvalrico.com.

4321 Lynx Paw Trail  
Valrico, FL 33596  
Ben@krkvalrico.com

[www.krkvalrico.com](http://www.krkvalrico.com)

**Are You Supporting our Commercial Advertisers?**

Since revenue from our commercial advertisers helps to defray the cost of printing and distributing *The Kibbitzer*, **we urge all of our readers to patronize our commercial advertisers and, when you see them, to thank them.** Without them, Congregation Beth Shalom of Brandon would not be able to publish *The Kibbitzer* in print and online.



## ROARING 20s GALA SPONSORS

*When it's time to pick a vendor or hire a professional for services, keep in mind these generous businesses that support CBS. Thank you to the following businesses and friends for their participation in our Roaring 20s Gala.*

### SPONSORS

Segal Funeral Home  
Colorado Health & Youth Dermatology  
Hillsboro Memorial Funeral Home  
St. Petersburg Opera Company  
Stephen & Anna Feldman  
Christopher Waite, DMD (Brandon Dental)

Zomesa

HUB

Keith Balot - Kids 'R' Kids

Mark & Sheryl Finke

Errol & Sheila Fishman

Diane & Peter Jacobson

Anonymous

Robert Clarke Industries

Allan & Denise Weber

Dave & Carol Anne Friedman

Gerry & Judith Pliner

Brandon Plastic Surgery

Advanced Oral Surgery of Tampa

Toby Koch & Allan Weiss

Dr. Stephen Zweibach -

Women's Health & Wellness

Gulfside Pool & Spa Inc.

Reed & Reed

Isabel & Jonathan Ellis

Danita & Randy Freedman

Jan & Bruce Sperry

Dr. Shawn & Sam Wallace

Melissa Golden

Meral Ginsberg

Joan Frankel

Mitch & Suzie Baylis

Steve & Sheila Slavkin

Dr. Jeremy Rogers - Florida ENT & Allergy

Gail & Michael Verlin

### SPECIAL THANKS TO

David Morris, Entertainer

Brandon Elks Lodge

Blake Kennedy, Auctioneer

Mitch & Suzie Baylis and

our FUNdraising Committee



## DONATIONS

Congregation Beth Shalom accepts donations for many purposes, with a variety of opportunities for donors to support the good works of the Temple. You may contact the office either by phone or email to make a contribution, or head to our website to make a secure online payment through a PayPal account or by using a credit card.

### Funds:

- **General Fund** (unrestricted): An unrestricted gift to the General Fund allows the temple to use those funds wherever they may be needed most. This fund incorporates contributions received from our High Holy Day Appeal, Yahrzeit donations, Bricklets, Adopt-A-Book, Tree of Life (unless otherwise indicated) and other non-restricted gifts.
- **Building Fund:** A fund to ensure the continuing physical growth of our spiritual home. Intended for capital improvements and major building repairs.
- **Endowment Fund:** Gifts to this fund are placed in an investment account and temporarily restricted or can be defined/restricted by the donor. This fund ensures the future of our temple.
- **Religious School Scholarship Fund:** These funds will be made available to Religious School students who are in need of tuition assistance, as determined confidentially by the Treasurer.
- **Rabbi's Discretionary Fund:** a fund for assistance to families in need, scholarship assistance, interfaith council, Holocaust museum and other endeavors at the Rabbi's discretion.
- **Youth Group Fund:** a fund that supports the ongoing engagement of post b'nai mitzvah youth, providing meaningful and fun experiences for our teens, and keeping them connected to their Jewish community.

*If you wish to designate a gift to a particular purpose, for example, Food Bank, Choir, Oneg, Social Action, etc., you may do so by noting as such on your payment method or with an accompanying note; otherwise, your gift will be used where it is needed most.*

### Opportunities:

- **Adopt-A-Book:** A dedication label will be placed in one of our prayer books, to commemorate a simcha or in honor or memory of a loved one for just \$54.
- **Bricklets:** For as little as \$9 you can send a Bricklet Card instead of buying a card for birthdays, condolences, etc. A Bricklet Card in your name will be sent to the person you wish stating that a donation has been made in his or her name to Beth Shalom to honor the occasion.
- **Tree of Life:** The Tree of Life is on the back wall of our Sanctuary. An engraved leaf or stone can commemorate many simchas, b'nai mitzvah, wedding, birth, graduations, etc. Leaves are \$180, and stones are \$1800.
- **Yahrzeit Plaque:** To honor the death of a loved one, you may purchase a plaque that will be cared for in perpetuity for \$350. The name of the deceased along with their date of death is included on the plaque.

*Unless otherwise noted by you, your gift will be acknowledged in The Kibbitzer the month following its receipt.  
If your donation is incorrectly listed or omitted, please notify the temple office immediately.*

**Donations listed below were received between April 16 and May 15.**

### GENERAL FUND

**In Loving Memory of Simon Freedman**  
Dave & Carol Anne Friedman

**In Loving Memory of Bernie Friedman**  
Dave & Carol Anne Friedman

**In Loving Memory of Marvin Slavkin**  
Steve & Sheila Slavkin

**In Loving Memory of Marilyn G. Rowen**  
Judith & Gerry Pliner

**In Loving Memory of Paul D. Goldstein**  
Judith & Gerry Pliner

### TREE OF LIFE

**In Honor of Sheila Fishman and all she does for CBS**

Jenny Allen, Mitch & Suzie Baylis, Andrea Chassen, Anita Clifford, Jonathan & Isabel Ellis, Julie Enszer, Anna & Stephen Feldman, Dave & Carol Anne Friedman, Lea & Michael Garbett, Janice Perelman, Gerry & Judith Pliner, David & Rudina Richter, Steven & Sheila Slavkin, Toby Koch & Alan Weiss

**In Honor of Rabbi Bryan Mann**  
Gerry & Judith Pliner, Denise & Allan Weber, Howard & Sandy Saviet, Joan Frankel, Lynn & Larry Kaler, Maya and Jacob Wyatt, Jonathan & Isabel Ellis

### YAHARZEIT PLAQUE

**In Loving Memory of Bree Phoenix**  
Anna & Stephen Feldman, Judith & Gerry Pliner, Alan & Denise Weber, Michael & Virginia Barnett, Adam & Natalie Carmona Watson, Howard & Sandy Saviet, Carol Wagner, Lea & Michael Garbett, Neal & Janet Kavesh, Polly & Ira Armon

**In Loving Memory of Wendy Weiss**  
Alan Weiss & Toby Koch







## Anniversaries

6/6	Diane & Peter Jacobson
6/11	Jacqueline & William Kalbas
6/12	Carole & Joe Plesur
6/14	Sheila & Steve Slavkin
6/20	Rudina & David Richter
6/25	Rita & Alan Tiller



## Yahrzeits

6/1	George	Barron Huber	Father	of	MarDee	Buchman
6/4	Robert	Hirshenson	Father	of	Steve	Billor
6/5	Rose	Friedman	Grandmother	of	Dave	Friedman
6/5	Jack	Lubin	Father	of	Michael	Lubin
6/7	Anita	Bortson	Cousin	of	Carol	Wagner
6/7	David	Edelson	Grandfather	of	Joel	Edelson
6/8	Louis	Silberstein	Husband	of	Blossom	Grimm Silverstein
6/8	Rose	Edelson	Mother	of	Joel	Edelson
6/12	Oliver	Workman	Father	of	Anna	Feldman
6/14	Irwin	Shaw	Cousin	of	Toby	Koch
6/18	Mary	Finkelstein	Great Aunt	of	Joanne	Ronay
6/18	Rose	Steinberg	Grandmother	of	Joanne	Ronay
6/18	Moses	Finkelstein	Great Uncle	of	Joanne	Ronay
6/20	Chaya	Pliner	Grandmother	of	Gerald	Pliner
6/21	Michael	Plesur	Father	of	Joe	Plesur
6/23	Clare	Beth	Friend	of	Gail	Verlin
6/23	Betty	Hunt	Mother	of	Joan	Frankel
6/24	Debbie	Jacob	Sister	of	Jeffrey	Jacob
6/24	Agnes	Antonak	Grandmother	of	Lee	Schwartz
6/26	Michael Arthur	Kivel	Ex Husband	of	Carol	Wagner
6/28	Renee	Epstein	Mother	of	Fred	Epstein
6/28	Lillian	Chassen	Mother	of	Andrea	Chassen
6/29	Joseph	Taratoot	Grandfather	of	Sandra	Roberts
6/30	Kalman	Feinstein	Husband	of	Ethel	Feinstein



## Birthdays

6/2	Zohar Elazer
6/4	Gail Verlin
6/4	Karen Weber
6/4	Joseph Ellis
6/5	Tiffany Feldman
6/5	Kelley Ellis
6/8	Paul Cantrell
6/10	Caren Magdovitz
6/11	Mathew Billor
6/12	Sandy Santucci
6/14	Micah Dugan
6/16	Jacob Garbett
6/23	Stephanie Ferry
6/23	Lee Schwartz
6/24	Michael Verlin
6/24	Lisa Cantell
6/25	Davina Feldman
6/25	Sheryl Finke
6/26	Isabel Ellis
6/27	Jamie Freedman
6/30	Judah Wyatt

## Simchat Shabbat!

Come celebrate your birthday or anniversary with us! A special Shabbat service is held every month to honor all our joys for that month. For this month it will be:

**June 19**

The dates listed for the Yahrzeits are adjusted yearly according to the Jewish Calendar and may not necessarily coincide with the common date of death. Names are read for Kaddish at the Shabbat before the actual date. If you would like to have the common date listed, please contact the temple office.

## Want to advertise in *The Kibbitzer*?

Ad Size	Monthly Rate	10% Discounted (Annual only)
Bus. Card	\$20	\$216
1/4 page	\$40	\$432
1/2 page	\$50	\$540
Full page	\$75	\$810

Special rate for CBS Members — 10% off MONTHLY rate with 6-month commitment.

To reserve your place in the next issue, e-mail the temple office at [cbs-admin@hotmail.com](mailto:cbs-admin@hotmail.com) or call 813-681-6547.

## Babysitters

Contact the temple office for a list of available babysitters. Contact information, qualifications and transportation details are available for each sitter. We will not publish information about our younger members online due to privacy concerns.



**ATTENTION!** We send *The Kibbitzer* out online. This change has been made to help decrease one of our expenses at Beth Shalom.

However, if you prefer receiving your *Kibbitzer* via the US Mail, please call the Temple at (813) 681-6547 or e-mail the Temple ([cbs-admin@hotmail.com](mailto:cbs-admin@hotmail.com)) to tell us you **do not** want to get your *Kibbitzer* online. Please help Beth Shalom cut its expenses and receive your *Kibbitzer* sooner.



### Thank You.

Now when you shop at [smile.amazon.com](http://smile.amazon.com), your purchases will support **Congregation Beth Shalom Of Brandon Inc.**

[Change your charity](#)



Next, make it easy to return to [smile.amazon.com](http://smile.amazon.com).  
Install the AmazonSmile shortcut in your browser.

[Install now for Internet Explorer](#)

Share your support: [f](#) [t](#)

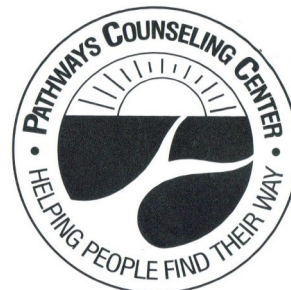
[Dismiss](#)



Congregation Beth Shalom is now participating in Amazon Smile — it's an easy way for CBS members, family and friends to support the temple. Simply use the following link:

<http://smile.amazon.com/ch/59>

-3026396 and shop, shop, shop!



Marriage, Family, & Individual Counseling



Adolescents 13 Yrs Old to Adults



Evening & Weekend Hours



Most Major Insurance Accepted

**813-681-7441**

108 Mason St., Brandon, FL

## Brandon Foot Care Center

Larry A Kaler, DPM  
Foot and Ankle Specialist

**BrandonFoot.com**

Lumsden Executive Park

669-A W Lumsden Rd  
Brandon, FL 33511

Phone: (813) 654-3354  
Fax: (813) 653-9177



**Congregation Beth Shalom**  
**of Brandon**

# June 2020

Sun	Mon	Tue	Wed	Thu	Fri	Sat
	1	2 7 PM Board Meeting	3	4	5 7:30 PM Erev Shabbat Service-	6 10 AM Taste of Tanakh
7	8	9	10	11	12 7:30 PM Erev Shabbat Service	13
14	15	16	17	18	19 7:30 PM Simcha Shabbat Service	20
21 3 PM Let's Chat	22	23	24 LLL Meeting 6:30 PM Ritual Meeting 7:30 PM	25	26 7:30 PM Erev Shabbat Service	27
28	29	30				

---

***Inside Scoop***

<b><i>Membership</i></b>	<b><i>5</i></b>
<b><i>Life Long Learning</i></b>	<b><i>6</i></b>
<b><i>Religious School</i></b>	<b><i>7</i></b>
<b><i>Page Turners</i></b>	<b><i>9</i></b>
<b><i>Ladies Night Out</i></b>	<b><i>9</i></b>
<b><i>Dinner With The Tribe</i></b>	<b><i>9</i></b>
<b><i>Calendar</i></b>	<b><i>15</i></b>

**Welcome the Stranger...**  
**Stranger No More.**