

The Kibbitzer

Congregation Beth Shalom

706 Bryan Road, Brandon, FL 33511

Phone (813) 681-6547

www.BethShalom-Brandon.org

January 2020 Volume 30, Issue 8

Rabbi

Bryan Mann 681-6547

Administrative Director

Jenny Allen 681-6547

Cantorial Soloist

Sandy Santucci 681-6547

Executive Board:

President

Jon Ellis 240-4078

Past President

David Friedman 417-3088

1st VP: Beit K'Nesset

House of Meeting

Gerry Pliner 436-0080

2nd VP: Beit Am

House of People

Toby Koch 654-0877

3rd VP: Beit Kehillat

House of Community

David Friedman 417-3088

Treasurer

Allan Weber 867-885-4806

Secretary

Sheila Fishman 833-7843

Members at Large

Mitch Baylis 808-561-8130

Steve Slavkin 323-0541

Sheryl Finke 654-4142

Julie Enszer 530-4349

Lea Garbett 672-9383

Gabriel Lifschitz 571-277-1416

FROM THE RABBI - Rabbi Bryan Mann

Key Takeaways From URJ Biennial



It is incredibly difficult to sum up the incredible learning, praying, and connection that happened at URJ Biennial in Chicago. For now, here are some key takeaways from some of the learning sessions that focused on justice and inclusion. Along with these sessions I did go to a wonderful session called "Eight Principles of Successful Congregations." Much of what was shared in that session is in this article which I encourage you to read: <https://urj.org/blog/2019/07/31/8-principles-drive-strong-congregations>. I would like to start by sharing a bit of the "As Numerous as the Stars of Heaven" speech by Rabbi Rick Jacobs, the President of the URJ, which he shared with us the second night of Biennial:

"We must realize and embrace our true diversity instead of ignore it or worse dismissing it. North American Jews, especially among younger generations come from different backgrounds in terms of their faith, abilities and disabilities, economic class, relationship status, race, and ethnicity, gender and sexuality and more ... Look at me. I am a white Ashkenazi, cisgender, straight rabbi, baby boomer, the children of two Jewish parents ... But the majority of Jews in North America are no longer like me. Baby boomers...have been the largest generation of people in North America, until this year when millennials surpassed them. Younger members of our community are more diverse than their parents, more multiracial, more proudly and openly LGBTQ ... Our tent is growing and changing and our diversity will make us stronger ... Embracing our diversity will change who we are and that change will make us better. It will make our communities and congregations beacons of possibility in our divisive and increasingly hate-filled world." (I encourage you to read his full speech available at <https://urj.org/blog/2019/12/12/numerous-stars-heaven-o>.) At an antiracism session Bryant Heizelman, one of the Jew'v'Nation alumni (<https://urj.org/what-we-do/audacioushospitality/jewvnation-fellowship>), asked these essential questions: "Do the issues that matter to Jews of color matter to you? Do the issues that matter to Jews of color matter to your leadership? Do you know what those issues are?" I invite you to take some time to truly reflect on these questions and if they feel uncomfortable sit with that discomfort as we were encouraged to do at this session.

Another key takeaway from most of the sessions dealing with justice and inclusion is that claiming one is "color blind" or "Doesn't see race" or "That person is just a person who happens to be LGBTQ not an LGBTQ person" means you are not seeing the full person. You are not truly getting to know someone, the issues that matter to them, and the best way to invite them into your community if you ignore essential aspects of their identity.

It is important also to ensure the visuals of the community reflect the diversity. Many panelists asked, "Are Jews of color, LGBTQ Jews, Jews with disabilities visually represented on your website, the walls of your synagogue, and/or anywhere else in your promotional materials? Would these Jews see themselves as a part of your community before they enter the door? If not, why would you expect them to come into the community?"

As we think about strengthening our congregation and the Jewish community as a whole, keep in mind it is strategic to embrace diversity. As younger generations are more diverse, in order to attract and engage those younger members, we need to show we care about the issues that matter to them. This means truly learning what those issues are that matter to Jews of color, LGBTQ Jews, Jews of varying abilities, Jews of different generations, Jews of different economic classes. This learning and the conversations that need to happen to support this learning are likely to get uncomfortable. Sitting with that discomfort and processing it is a part of both embracing our increasingly diverse Jewish community and a part of processing any transitions and change of a community. Finding ways to talk about uncomfortable things as a community will be necessary. What is working for some members of the congregation may not be working for others and may not be working for non-members of the congregation.

URJ Biennial got me thinking a lot about Congregation Beth Shalom's needs in the coming years. I look forward to sharing more about my time at Biennial with you all.

FROM THE PRESIDENT - Jon Ellis

First, the good news is we have resolved the dispute we had with our insurer regarding resolution of our roof claim. While parts of the agreement are confidential, I am pleased to announce the settlement will go a long way toward a new roof. I want to thank Gabe Lifschitz for all the ground work he has done regarding the roof from reviewing the situation, obtaining bids to ultimately obtaining a contract for the installation. A new roof should be on the building in the next few months.

While the pace at which members are resigning has slowed, we are still losing members. The loss of membership at this point is becoming an issue for our long- and short-term sustainability. We see the loss in membership dues with each resigning member. As membership falls, so does our monthly revenue. Some months we are forced to go into our endowment funds to make payroll or pay our necessary expenses. This tend cannot continue. Without a significant change in the immediate future, our savings and endowment will no longer exist and we will be unable fulfill our obligations. (We are now including a link for our financials in *The Kibbitzer*. Please see details on page 3.)

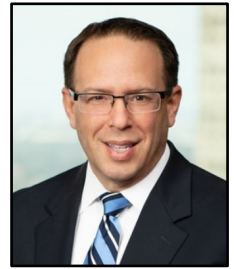
Notwithstanding the loss of membership, our High Holiday donation drive hit a record we have not seen before. In other words, with fewer members, our contributions increased. I believe this means the members we do have are more engaged in Congregation Beth Shalom than they may have been in the past. Moreover, while we did not charge any person who was not a member to join us for High Holidays, the amount raised from nonmembers also increased. Still, we need to do more to ensure we are touching the lives of our members and ensuring we are a warm and welcoming place of worship to those Jews in the area who are not members.

While our membership committee is working hard, it desperately needs assistance. Please consider joining. The membership committee may be the most important committee we have these days. Without a successful membership committee, we will be unable to turn ourselves around. Please let me know if you will be willing to assist. Even if you can only donate a few hours there are few areas your volunteer hours could mean more. In other words, HELP!

To increase our reach in the Brandon/Lithia/Valrico/Riverview area, we are exploring changing our dues model. While there are different models being discussed, a number of individuals are backing a voluntary dues structure, a structure in which there is no set amount that must be paid to be a member, but a belief those who are members will donate enough to the synagogue that we are able to fulfill our mission. This is a risky endeavor, if we chose to follow this model, but it will force us to ensure we are meeting our members' needs. It is based on the hope that no one who is a current member will reduce the amount they are currently paying, barring an unforeseen event. The model will work if we can attract new members who are willing to join and contribute. But without a transformative change, there are a number of members who question are ability to remain a

going concern. If you have thoughts on a voluntary dues model, please forward them to me.

Lastly, I want to thank Shelia Fishman, Julie Enszer, and Michael Lubin for agreeing to co-chair our rabbi search committee. They have already gathered a number of resumes and are beginning to review them. Upon completion of the task, I have requested they consult with the rest of the committee in determining who they believe is the best fit and if a consensus is reached committee, we anticipate bringing the rabbinical candidate here to meet the rest of the congregation.



UNION FOR **MEMBER**
REFORM JUDAISM

האיחוד ליהדות רפורמית

SERVING REFORM CONGREGATIONS IN NORTH AMERICA

Congregation Beth Shalom provides a meaningful spiritual home for people of all ages and levels of knowledge, a place to learn and to question, a place to worship and to celebrate, and a place to find a community that cares.

We offer:

- ☆ **Friday worship services at 7:30 p.m.**
- ☆ **Religious school pre-k through 10th grade**
- ☆ **Complete B'nai Mitzvah preparation**
- ☆ **Youth group programming**
- ☆ **Adult Education classes**
- ☆ **Community-wide events, including Mitzvah Day**

Upcoming Dates To Remember

- **Saturday, Jan. 4, at 10 a.m.,** Taste of Tanakh will explore (Parshat Vayigash): Serach Bat Asher. More information on page 6.
- **Sunday, Jan. 19, at 3 p.m.,** Let's Chat will discuss "Jews and Justice Movements in Honor of MLK Jr. Day Weekend." More details on page 6.
- **Monday, Jan. 20, 6 p.m.:** Page Turners. More information on page 8.
- **Thursday, Jan. 23, 7 p.m.:** **We're Not Getting Any Younger, Part 1.** More details on page 6.
- **Sunday, Jan. 26, 5:30 p.m.:** Dinner With the Tribe. More information on page 8.
- **Monday, Jan. 27:** International Holocaust Remembrance Day.
- **Saturday, Feb. 22, 5:30 p.m.:** Roaring '20s Gala, Elks Lodge of Brandon, 800 Centennial Drive, Brandon. More information on page 10.

Special
EVENT

*Religious Education Calendar, page 7;
Full calendar, page 15*



January Oneg Schedule

There can be no joy without food and drink. — Talmud, Mo'ed Katan

THANK YOU! to the following people who will host an oneg Shabbat in January.

- **Jan. 3: Murray & Jerilyn Dimant** will host the oneg in honor of their new grandson, **Benjamin Ari**, and his parents **Loranah & Josh Sklaroff**.
- **Jan. 10: Julie Enszer** will host the oneg in honor of her birthday.
- **Jan. 17: Jon & Isabel Ellis** will host the oneg in honor of their 28th anniversary.
- **Jan. 24:** open/potluck oneg.
- **Jan. 31:** Ben & Debbie Miller will host the Oneg in honor of Ben's Birthday

On behalf of the Oneg Committee, we want to express a big thanks to our January hosts and also to also offer them a huge Mazel Tov for their special life cycle celebrations!

Anna Feldman & Judith Pliner

The Kibbitzer

Volume 30, Issue 8
Published Monthly by
Congregation Beth Shalom
706 Bryan Road
Brandon, FL 33511
Phone 813-681-6547
Email: cbs-admin@hotmail.com

Email and articles for publication:
TheKibbitzer@hotmail.com
For current news and events
see the congregation's website:
<http://www.bethshalom-brandon.org>

Jenny Allen, Administrative Director
813-681-6547 • cbs-admin@hotmail.com

Office hours:

subject to change without notice, please refer to eBlast
Summer hours:
Tues.—Friday: 9:30 a.m.—1 p.m.
Office is closed on holidays

Weekly Email Blast submissions

bethshalominfo@gmail.com
eBlast deadline is Wednesday at 4 p.m.

CBS FINANCIALS

In an effort to be transparent to all of our congregants, Congregation Beth Shalom will be publishing its monthly financials for all to see, and can be found in the link below.

As you will see, our generous congregants have donated higher than expected amount during the High Holiday seasons. While we have been diligent in minimizing expenses, these donations have been helpful as we proceed through expenses such as city-directed tree removal and roof repairs to keep CBS in the best shape possible.

With this transparency, we welcome all to note areas of need, and we welcome any suggestions or contributions to keep CBS on firm financial footing.

<https://bethshalom-brandon.org/wp-content/uploads/sites/173/2019/12/CBS-19.11.30-PL-vs-Budget-Abbreviated.pdf>

THE FUN STUFF

Woman Of Distinction



Congregation members help to celebrate Suzie Baylis, who was honored in the 2019 Bobbe Karpay Women of Distinction Program. This annual event honors women in the Tampa area who have worked diligently, creating a long list of accomplishments. They give of their time, their enthusiasm, and their dollars to help make our community and our world a better place. In addition to being dedicated Jewish leaders, these women are also wives, mothers, grandmothers, great-grandmothers, business owners, professionals, and even volunteers for other organizations. They have a vision for their organizations and kehillah (our community) and work hard to turn these visions into realities. Congratulations Suzie!

CBS Cookbook Coming Soon!

Congregation Beth Shalom is putting together something special and which everyone can contribute to. We are going to create a CBS Cookbook.

More than a cookbook, we want to make it special and personal. We are looking for your Jewish recipes or related recipes. But more than just a list of ingredients and directions, we want the story behind the recipe. We want this to be a book of memories as well as food.

If you have a favorite recipe that was given to you from a friend or a relative, we would like you to provide a short story on who that person was or how you got the recipe or what memories that recipe brings you.

We want to compile as many of these recipes or stories you have from all our members. Don't have a recipe? Reach out to friends and relatives and ask them, then write a short intro on which you got this from. Have a great story but don't have the recipe, perhaps we can find it.

This cookbook will be compiled with pictures and be produced professionally. Hopefully it will become a treasured book for everyone.

For more information or to email your recipe and story, contact all4suzie@gmail.com.



Committees/Chairpersons

Building/Capital Fund

Peter Jacobson

Caring

Christine Stockelman

Finance*

Allan Weber

Fundraising*

Mitch & Suzie Baylis

Life Long Learning*

Janice Perelman

Strategic Planning*

Open

Membership*

Gail Verlin, Judith Pliner

Oneg

Anna Feldman, Judith Pliner, and
Sue Reckner

Publicity

Andrea Chassen

Ritual*

Steve Slavkin

Facility and Safety

Mitch & Suzie Baylis

Social Action*

open

Religious School*

Sheila Fishman

BESTY—Youth Group*

Advisor — Steven Birnholz

President —Kelsey Birnholz

** Ex-officio voting board member
(each committee only gets one vote)*

Other Programs

CBS Singles Over 50

Anita Clifford

Chavurah

Sheila Fishman

Dinner With the Tribe

Anita Clifford

Interfaith/Outreach

Sheila Slavkin

Kibbitzer Editor

Lea Garbett

Kolot Shalom — Choir

open

Library

Sandy Saviet
David Richter

Men's Club

Seth Dugan

Page Turners

Sheila Fishman

Web Administrator

Jenny Allen

Join with CBS in offering congratulations and recognition to the following members on their accomplishments:

MAZELS

- Mazel tov to **Murray and Jerilyn Dimant** on the birth of their grandson, **Benjamin Ari**.

KUDOS

- Kudos to **Sheila Fishman** for organizing all of our religious school Chanukah events.
- Kudos to our **religious school students and their teachers** for leading services in December.
- Kudos to **Christine Stockelman, Julie Enszer and the retreat team** for a wonderful and meaningful event.
- Kudos to **Christine Stockelman** for helping with the oneg at the service for Anita Hoffman.
- Kudos to **Mitch and Suzie Baylis** for helping with Chanukah shabbat.



*Do you know a CBS member who should be congratulated for a special accomplishment?
If so, email the name and accomplishment to cbs-admin@hotmail.com.*



Your 100% Satisfaction is Absolutely
Guaranteed !

Clarke Automotive Systems

*If you have a problem with your car, let us give you our honest, expert
& straightforward advice so the job is done right—the first time !*

Bob Clarke
(813) 685-2939

131 Central Ave
Brandon, FL 33510



BEN FERNANDES & KEITH BALOT
OWNERS

phone: 813.657.6200
fax: 813.413.2045
Keith@krkvalrico.com

4321 Lynx Paw Trail
Valrico, FL 33596
Ben@krkvalrico.com

www.krkvalrico.com



MEMBERSHIP

The major topic at our December membership meeting was how to recruit new members. We discussed community outreach, inviting the community to participate in our events, having lots of publicity, and asking our members to share with people who are Jewish and invite them to visit Congregation Beth Shalom to “see what we have to offer.” We are even looking into changing our current dues model to help us increase our membership.



Everyone at Beth Shalom can help our congregation grow by being friendly as we run errands and whenever we meet someone new. It's up to all of us, not just one or two specific people. Be friendly and see what can happen to our congregation – it's amazing!

May your 2020 be a healthy and happy new year!

Hag Samaich!

– *Judith Pliner and Gail Verlin,*
“The Membership Ladies”

LIFELONG LEARNING — Janice Perelman

“We’re Not Getting Any Younger” Series

This 5-part series about aging issues, presented by Life Long Learning, will begin on **Thursday, Jan. 23, at 7 p.m.** The first session will be presented by **Peter Lally, LCSW, affiliated with the Psychological and Social Wellness Center of Tampa Jewish Family Services.** He will share his expertise as we explore the “Sandwich Generation” from both that of the aging parent and the adult child who may now be placed in the role of the caregiver. What are the problems and concerns facing these adult children? How can the aging parents accept help from their children without overwhelming them? How do both parents and adult children accept such a reversal in responsibilities physically, financially, and emotionally?

Future Series Events include:

- **Sunday, Feb 2, 7 p.m.: “Making Memories”** an exploration of how and what to share with your children and grandchildren in the form of an Ethical Will. **Janice Perelman, M.A., former social casework supervisor and educator,** will lead us through the steps of creating a meaningful document which will guide us in handing down our history to future generations.

- **Monday, Feb. 17, 7 p.m.: “Navigating Elderlaw Issues.”** Find out about all of the legal documents which are recommended to make decision-making easier and smoother, including wills, revocable trusts, entrusting another person to act as a surrogate health advocate, power of attorney, etc. You will learn what these documents are, why you need them, and how each one may help at critical times in the future. The presenter for this session will be **Jack Rosenkranz, Esq.,** an attorney who specializes in elderlaw issues.

- **Wednesday, March 4, 7 p.m.: “Managing Living Arrangements as We Change.”** A representative from the **Hillsborough County Senior Connection Center** will address a variety of living arrangements which may be available to us as our needs change because of changes in health, including how we can access financial aid such as Medicaid.

- **Sunday, March 22, 7 p.m.: “Remains of the Day - End of life Decisions.”** Planning can be so helpful when addressing end-of-life events. **Charles Segal, director of Segal Funeral Home** will help to inform us about what options are available to us, when we should make such decisions, and how they can be arranged. We will also address the role services such as Hospice can play.

Cost for the entire series of five sessions is \$25 per person for members and \$35 per person for non-members. Call the temple office at (813) 681-6547 to reserve your ticket.



- **Saturday, Jan. 4, at 10 a.m.,** Let’s start off the year with Taste of Tanakh and an opportunity to explore and discuss influential women in our lives with Rabbi Bryan Mann. The Parshat Vayigash examines the daughter of Asher, Serach, to whom is attributed mystical insights and secrets. We will

study some of the stories surrounding Serach as well as how women have influenced our own lives. Join us for coffee and bagels and a lively discussion. This event is always free and open to the public.

- **Sunday, Jan. 19, at 3 p.m.,** Let’s Chat will discuss “Jews and Justice Movements in Honor of MLK Jr. Day Weekend.” Many of us know about legacy of Abraham Joshua Heschel and other Jews during the Civil Rights Movement of the 1960’s. What about other Jews at the time? What about Jews and justice movements today? Join us for a non-partisan discussion about how Jews related to and relate to various justice movements. Are we a part of them? Are we against them? How do we decide when to speak out and when to stay silent?

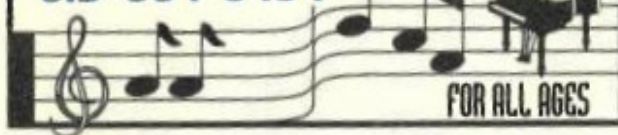
Calling all adults who would like to learn Hebrew!

Michael Lubin has volunteered to teach an 8-week course on Wednesday evenings at 7 p.m. starting Jan. 22. The class can accommodate up to 15 adults with the goal of learning how to read Hebrew well enough to read from our prayer book. The course will be open to CBS members for a donation of \$18 and to the community at large for \$36 per person. Materials will be provided at no additional cost. This is a wonderful opportunity for adults to learn Hebrew on the same footing as others who are also new learners.

Wait, wait! There’s more! Feed your mind and feed your body. Also planned for the near future is “Just Cookin!” a cooking class where you can learn how to prepare Jewish foods from around the world. More on this later on.

CAROL'S MUSIC STUDIO
Piano, Keyboard & Organ Lessons

813-657-8704



*“Joy & Expression Through Music”
travels to your home*



EDUCATION— Sheila Fishman

During the final weeks of 2019, the religious school was working diligently on enhancements to the curriculum to ensure our students receive the finest education possible.

When we re-convene Sunday, Jan. 5, religious school begins with our morning worship service under the direction of Rabbi Bryan at 9:30a.m. This session is open to all grades—pre-kindergarten - 7th grade. On this date, our students will be visiting the library to learn about Jewish books. They will be provided with an opportunity to return previously borrowed books and sign out new books.

Sunday, Jan. 12, religious school commences at 9:30a.m. for worship services for students grades 2 - 7. Thereafter, they will join their teachers in their classrooms for Hebrew and Judaica classes. At 10:45 a.m., an arts and crafts project is scheduled.

Religious school is closed Sunday, Jan. 19, but we meet again Sunday, Jan. 26, for all classes. On the last date of the month, our worship service will be provided by Rabbi Bryan. Students will receive training in Judaica and Hebrew.

As always, our religious school day ends each Sunday at 12 p.m.

BESTY BEAT



In December, BeSTY members had a great time at Chili's socializing and planning for 2020! Upcoming events include a bonding experience in an escape room, laser tag, and a mall scavenger hunt.

Even if you're not a BeSTY member yet, it's not too late to join the fun.

Please email BestyBoard@gmail.com if you're interested in participating in one or more events.

Women's Health & Wellness

Individualized OB/Gyn Care



- Better Care from Adolescent Age to Geriatric Age
- Fertility to In Office Birth Control Procedures
- Personalized One-on-One Care
- Outpatient Procedures with Little or No Downtime
- Weight-Loss Program
- 3-D & 4-D Ultrasound

Stephen Zweibach, M.D.
Natasha Champion, M.D.
Mariel Rotundo-Patino, D.O.
Heidi DiSalvo, D.O.

2 Locations to Serve You
815 S. Parsons Avenue, Brandon
13148 Vail Ridge Drive, Riverview
813-571-2777 whnw.net

Se habla español

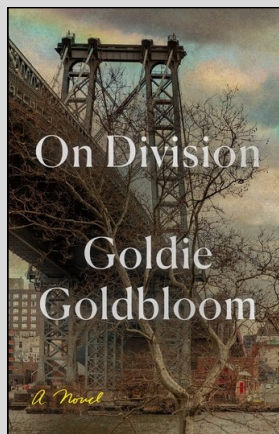
PAGE TURNERS

Monday, Jan. 20, at 6 p.m., Page Turners will meet to discuss Goldie Goldbloom's fascinating novel, *On Division*. Join us for a lively discussion of the book (described below by the publisher) and a light dinner. A few copies of the book remain for free donated for Page Turners; email Julie Enszer at JulieREnszer@gmail.com to secure a copy.

On Division

In Williamsburg, Brooklyn, just a block or two up from the East River on Division Avenue, Surie Eckstein is soon to be a great-grandmother. Her ten children range in age from 13 to 39. Her in-laws, postwar immigrants from Romania, live on the first floor of their house. Her daughter Tzila Ruchel lives on the second. She and Yidel, a scribe in such demand that he makes only a few Torah scrolls a year, live on the third. Wed when Surie was sixteen, they have a happy marriage and a full life, and, at the ages 57 and 62, they are looking forward to some quiet time together.

Into this life of counted blessings comes a surprise. Surie is pregnant. Pregnant at 57. It is a shock. And at her age, at this stage, it is an aberration, a shift in the proper order of things, and a public display of private life. She feels exposed, ashamed. She is unable to share the news, even with her husband. And so, for the first time in her life, she has a secret—a secret that slowly separates her from the community.



Goldie Goldbloom's *On Division* is an excavation of one woman's life, a story of awakening at middle age, and a thoughtful examination of the dynamics of self and collective identity. It is a steady-eyed look inside insular communities that also celebrates their comforts. It is a rare portrait of a long, happy marriage. And it is an unforgettable new novel from a writer whose imagination is matched only by the depth of her humanity.

About Goldie Goldbloom

Goldie Goldbloom's first novel, *The Paperbark Shoe*, won the AWP Prize, was named the Literary Novel of the Year by Foreward Magazine and is an NEA Big Reads selection. She was awarded a National Endowment for the Arts Fellowship, and has been the recipient of multiple grants and awards, including fellowships from Warren Wilson, Northwestern University, the Brown Foundation, the City of Chicago and the Elizabeth George Foundation. She is chassidic and the mother of eight children.

DINNER WITH THE TRIBE

— Anita Clifford

Our group is doing well and getting many to join us as we go out to eat at different venues. Come be with friends as we go back to old favorites and also try some new restaurants.



In January, we'll go to Bernini of Ybor. We get to enjoy their \$3 martinis and their pasta and entrees priced at 1/2 off (before 7 p.m.). Gluten free items are available too.

Sunday, Jan. 26, 5:30 p.m.

Bernini of Ybor
1702 East 7th Ave., Tampa

<http://berniniofybor.com/>

Please RSVP to Anita Clifford, niewdnarb@yahoo.com to reserve your seat

A Note About Pastoral Care

Rabbi Bryan wants to know when congregants are in need of pastoral care.



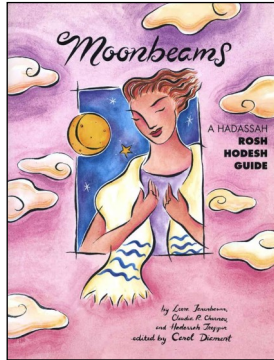
This includes but is not limited to: when our congregants or their family members are in the hospital, recently lost a loved one, or otherwise may need his support.

If you hear about a congregant in need, please contact Rabbi Bryan directly at rabbibryanmann@gmail.com and/or 857 728 4792.

Please do not assume just because you told another congregant, a board member, or even Jenny that Rabbi Bryan knows who is in need of pastoral care.

Rosh Hodesh, offered by Andrea B. Chassen

Months begin and end. In our calendar each month begins as the moon fades into blackness and begins to reemerge with a sliver of light. Rosh Hodesh, the new month, is a symbol of renewal. Thus, we can also use this time to look at ourselves, embrace a new view and start anew. Have been interested in joining a group of like-minded women who want to further their understanding of Jewish traditions and practice while continuing to grow and evolve?



So, when one cannot join a group, why not start one? That brings me to 2020. I am planning a monthly program that will be based this year on *Moonbeams: A Hadassah Rosh Hodesh Guide*. Each session will center on a topic and explore it more deeply. Rosh Hodesh is open to all women in our community and in your lives who have an interest in learning more. We will convene after the new year. Hope to see all there.



ILENE R. SCHWARTZ
Realtor®
(813) 625-2942

ileneRschwartz@gmail.com
Fax: (813) 655-1057
www.realtorilene.com
316 E Bloomingdale Ave, Brandon, FL 33511

HomeXpress
Realty, Inc.



Each Office is Independently Owned And Operated

Ladies Night Out

2nd Tuesday of each month
6:30pm

Enjoy a night out with the ladies of CBS!

We will dine at local restaurants, attend cooking demos, get creative with art/craft classes, play bunco, enjoy pot luck dinners, and more!

January 14



1713 State Rd 60 East
Valrico 33594

February 11



111232 Sullivan Street
Riverview 33578

March 10



6226 Ohio Avenue
Gibsonston 33534

R.S.V.P. by the Sunday prior <https://www.signupgenius.com/go/30e094ba5a62aa64-ladies>

Sandee Pelk // sandeepelk@verizon.net // 813.390.5056

Doogie Entertainment

DJ and Party Services

Weddings
Bar/Bat Mitzvahs
Children's parties
80's & 90's video parties
Office Parties
PA system rental/set-up



Phone: 813-400-3609
www.DoogieEntertainment.com
E-mail: Doogie@DoogieEntertainment.com

Pleased to offer a 10% discount on services to members of Congregation Beth Shalom

Jodi Olshina

USDF Bronze & Silver Medalist
Multi-discipline, multi-breed instructor
with 35+ years experience



Cottonwood Equestrian Center, LLC

Dressage -- Hunters -- Saddle Seat -- Stock Seat
Instruction Boarding Coaching Clinics

10205 Lyons Avenue
Lithia, FL 33547

334-648-1103
www.CottonwoodEquestrianCenter.com

Roaring 20's Gala

Saturday, Feb. 22, at 5:30 p.m., Congregation Beth Shalom of Brandon will partner with the Special Operations Warrior Foundation and hold its annual fundraiser at the Elks Lodge of Brandon.

Proceeds of the evening will be shared with SOWF to ensure full college funding to every surviving child of a special operator who loses their life in the line of duty. SOWF also provides immediate financial assistance to hospitalized wounded, ill, and injured service members so their families can be at their bedside.

This year's event, is a Roaring 20's Charity Gala with special honorary Co-chairman, Congressman Ross Spano.

The evening will feature door prizes, free Gatsby photos, dancing, a delicious buffet dinner, and both live and silent auctions. Highlighting the evening is our Speakeasy show, headliner R&B star David Morris who will perform songs from the 1920s to 2020 including songs from his newly released album. There will also be Speakeasy Dancers to teach the Charleston, so wear your best flapper outfit and let's party.

The Elks Lodge of Brandon is located at 800 Centennial Lodge Drive, Brandon. Tickets cost \$45 for adults (active military and veterans get 20% off), and \$10 for children aged 5 -12 years, free for children under 5 years. Tickets may be purchased by phone (813) 681-6547, or online at <http://www.bethshalom-brandon.org>.



The poster is for the 'Roaring Twenties Charity Gala' held on Feb 22, 2020, at the Congregation Beth Shalom of Brandon. It features a black background with yellow and white text and graphics. At the top, two flapper girls in white dresses and feathered headbands are shown in profile. Below them, the text 'ROARING TWENTIES' is in large, stylized white letters, followed by 'Charity Gala' in yellow and '1920/2020' in white. A yellow banner across the middle contains the 'SPECIAL OPERATIONS WARRIOR FOUNDATION' logo, which depicts a soldier and a family. The date 'Feb 22, 2020' is prominently displayed in large yellow letters. Below the date, the location 'Congregation Beth Shalom of Brandon' and 'Annual Fundraiser' are listed. A section for 'Partner Charity Special Operations Warrior Foundation' explains the purpose: 'Helping the families of those who have given the ultimate sacrifice'. A photo of David Morris is shown next to text about a 'Speakeasy Show' featuring him performing songs from 1920 to 2020. The 'Full Gatsby Buffet Dinner' is advertised for 5:30PM - 10PM, including a silent and live auction. Ticket prices are listed as \$45 per person, with a 20% discount for active military or veterans. The website 'www.bethshalom-brandon.org' is provided for ticket purchases. The event location, 'Elks Lodge of Brandon, 800 Centennial Dr. Brandon, FL', is at the bottom.

ROARING TWENTIES
Charity Gala
1920/2020

SPECIAL OPERATIONS WARRIOR FOUNDATION

Feb 22, 2020
Congregation Beth Shalom of Brandon
Annual Fundraiser

Partner Charity Special Operations Warrior Foundation.
Helping the families of those who have given the ultimate sacrifice

DAVID MORRIS
Speakeasy Show
Dancing & Performance
Starring
David Morris
Will perform songs from 1920 to 2020, including his latest Hit single "Welcome to My World"

Full Gatsby Buffet Dinner
5:30PM – 10PM
silent and live auction

Tickets only \$45 per person; Children under 13 - \$10
20% off active military or veterans
Purchase tickets online www.bethshalom-brandon.org

Elks Lodge of Brandon
800 Centennial Dr. Brandon, FL

David Morris Biography

Congregation Beth Shalom's annual fundraiser will feature R&B star David Morris.

Born and raised in Brooklyn, N.Y., David began harnessing his vocal style, piano playing and songwriting at a very early age. By the time he was 13, the self-taught musician was already proficient in piano and would mimic the soulful sounds of Motown that was played throughout his home. David is at his creative best when he's at the piano or writing a hit song. His vocal influences are resplendent of the sounds of Marvin Gaye, Donny Hathaway and Stevie Wonder to name a few. Currently David is working on becoming the hottest independent artist to hit the music scene.

His current EP "Welcome to My World" is set for release this summer and already contains the hit single of the same name, which is currently available on iTunes, Amazon and for purchase at his live shows.

THANK YOU TO OUR HIGH HOLY DAYS BRIDGE BUILDERS 5780

BONIM BRIDGE ☆ \$3,600—\$7,500

Isabel & Jonathan Ellis	Judith & Gerald Pliner
Diane & Peter Jacobson	Julie & Marvin Shienbaum

SHOMRIM BRIDGE ☆ \$1,800 - \$3,599

Stephen & Anna Feldman	Errol & Sheila Fishman
Steve & Sheila Slavkin	Anonymous (2)

MITZVAH BRIDGE ☆ \$360 - \$1,799

Suzie & Mitchell Baylis	Randy & Danita Freedman
Janice & Bruce Sperry	Joan & Aaron Koplin
Steven Billor	Robert Miller
Anita Clifford	Rudina & David Richter
Carol Anne & David Friedman	Carol Roberts
Sheryl & Mark Finke	Denise & Allan Weber
	Stephen Zweibach

CHAI BRIDGE ☆ \$180 - 359

Andrea Chassen	Sara & Jeff Goodman
Joan Frankel	Deborah & Mark Grenberg
Monica & Drew Frost	Lisa & James Smith
Irving (Gerry) Lawrence	Fruma & Nathan Tanzer
Lea & Michael Garbett	Gail & Michael Verlin

CHAVERIM BRIDGE ☆ \$36 - 179

Lois Erenberg	Phyllis & Milton Newman
Betsy Glickman	Carole & Joseph Plesur
Ruth Goldberg	Susan Reckner
Renate Greenfield	Arleen & Irving Sanders
Barbara Hart	Ruth & Jordan Spiegel
Irving Kadet	Sharon & Mervin Taub
Dale & Margaret Khan	Cheryl & Kevin Walkover
Toby Koch & Alan Weiss	

DONOR ☆ \$18 - \$35

Howard & Sandy Saviet
Kristan & Steven Birnholz
Kelsey Birnholz

The High Holy Day Appeal for 5780 is open through the end of January 2020. To make a contribution, please contact the office. This does not include donations made through the Book of Remembrance or Adopt-a-Book Campaigns, nor does it include non-members. If there are any errors or omissions to this listing, please notify the office as well.

SALUTE TO HEROES GALA SPONSORS

When it's time to pick a vendor or hire a professional for services, keep in mind these generous businesses that support CBS. Thank you to the following businesses and friends for their participation in our Salute To Heroes Gala.

CASH SPONSORS

Allan & Denise Weber
Amvets Post 44 Corp
Anna & Steve Feldman
Anonymous
Bob Clarke Automotive
Brandon Hyundai
Brandon Complete Dental Care – Richard Assing DDS
Brandon Plastic Surgery – Dr. Marvin Shienbaum
CenterState Bank
Christopher Waite DMD
Cottonwood Equestrian - Jodi Olshina
David & Carol Anne Friedman
Diane & Dr. Peter Jacobson – GMS PCP Group Practice
Errol & Sheila Fishman
Gulfside Pool & Spa, Inc.
Hank & Donna Mart
Hillsboro Memorial Funeral Home
Home Express Realty - Ilene Schwartz
Jan Pro – Trace Thompson
Jay Bolnick
Joe & Carole Plesur
Judith & Gerry Pliner
Kids R Kids - Keith Balot
Michael & Gail Verlin
Michael & Martie Spaier
Mitchell & Suzie Baylis
Pathways Counseling Center –
Dr. David & Rudina Richter
RGB Realty Florida - Renate B. Greenfield
SLK Law Firm - Jonathan & Isabel Ellis
Segal Funeral Home
Sperry Law Firm – Bruce & Jan Sperry
Toby Koch & Alan Weiss
Zomesa
Zweibach & Champion MD's PA –
Dr. Stephen Zweibach

IN-KIND SPONSORS

Brandon Elks Lodge
Doogie Entertainment
Regency Fine Art

DONATIONS

Congregation Beth Shalom accepts donations for many purposes, with a variety of opportunities for donors to support the good works of the Temple. You may contact the office either by phone or email to make a contribution, or head to our website to make a secure online payment through a PayPal account or by using a credit card.

Funds:

- **General Fund** (unrestricted): An unrestricted gift to the General Fund allows the temple to use those funds wherever they may be needed most. This fund incorporates contributions received from our High Holy Day Appeal, Yahrzeit donations, Bricklets, Adopt-A-Book, Tree of Life (unless otherwise indicated) and other non-restricted gifts.
- **Building Fund:** A fund to ensure the continuing physical growth of our spiritual home. Intended for capital improvements and major building repairs.
- **Endowment Fund:** Gifts to this fund are placed in an investment account and temporarily restricted or can be defined/restricted by the donor. This fund ensures the future of our temple.
- **Religious School Scholarship Fund:** These funds will be made available to Religious School students who are in need of tuition assistance, as determined confidentially by the Treasurer.
- **Rabbi's Discretionary Fund:** a fund for assistance to families in need, scholarship assistance, interfaith council, Holocaust museum and other endeavors at the Rabbi's discretion.
- **Youth Group Fund:** a fund that supports the ongoing engagement of post b'nai mitzvah youth, providing meaningful and fun experiences for our teens, and keeping them connected to their Jewish community.

If you wish to designate a gift to a particular purpose, for example, Food Bank, Choir, Oneg, Social Action, etc., you may do so by noting as such on your payment method or with an accompanying note; otherwise, your gift will be used where it is needed most.

Opportunities:

- **Adopt-A-Book:** A dedication label will be placed in one of our prayer books, to commemorate a simcha or in honor or memory of a loved one for just \$54.
- **Bricklets:** For as little as \$9 you can send a Bricklet Card instead of buying a card for birthdays, condolences, etc. A Bricklet Card in your name will be sent to the person you wish stating that a donation has been made in his or her name to Beth Shalom to honor the occasion.
- **Tree of Life:** The Tree of Life is on the back wall of our Sanctuary. An engraved leaf or stone can commemorate many simchas, b'nai mitzvah, wedding, birth, graduations, etc. Leaves are \$180, and stones are \$1800.
- **Yahrzeit Plaque:** To honor the death of a loved one, you may purchase a plaque that will be cared for in perpetuity for \$350. The name of the deceased along with their date of death is included on the plaque.

*Unless otherwise noted by you, your gift will be acknowledged in The Kibbitzer the month following its receipt.
If your donation is incorrectly listed or omitted, please notify the temple office immediately.*

Donations listed below were received between November 16 and December 15.

GENERAL FUND

In Loving Memory of Gertrude Sklar
Carol Wagner

In Loving Memory of Annette Feldman
Anna & Stephen Feldman

**Mazel Tov Murray & Jerilyn Dimant
and their Daughter and Son-in-Law,
Loranah & Josh on the birth of their son,
Benjamin Ari**
Anna & Stephen Feldman

In Loving Memory of Frank B. Arman
Polly & Ira Arman

In Loving Memory of Sharon Leibowitz
Gail & Michael Verlin

In Loving Memory of Diane Slavkin
Steve & Sheila Slavkin

BRICKLET

**To Carol Anne & Dave Friedman with deepest
sympathy on the passing of John Coleman Ridgway**
Judith & Gerry Pliner

DONATION

Joan Frankel
Anna & Stephen Feldman

TREE OF LIFE

**In honor of Peter Jacobson's Birthday
and His Retirement**

Much Love, Your CBS Friends;
Isabel & Jonathan Ellis, Sheila & Errol Fishman, Judith &
Gerry Pliner, Anna & Stephen Feldman,
Carol Anne & Dave Friedman, Sheila & Steve Slavkin,
Danita & Randy Freedman, Rudina & David Richter

RELIGIOUS SCHOOL FUND

**To Carol Anne & Dave Friedman with deepest
sympathy on the passing of John Coleman Ridgway**
Errol and Sheila Fishman





Birthdays

1/1	Sophia Savitt
1/2	Jodi Olshina
1/2	Shirley Ratner
1/3	Ben Miller
1/4	Sharon Aronson
1/5	Richard Oldman
1/12	Carol Wagner
1/13	Susan Reckner
1/16	Steven Birnholz
1/17	Diane Jacobson
1/19	Danita Freedman
1/20	Christina Frye
1/23	Clara Barnett
1/24	Stephen Yavlow
1/30	Errol Fishman
1/30	Julie Enszer
1/31	Jacob Wyatt

Simchat Shabbat!

Come celebrate your birthday or anniversary with us! A special Shabbat service is held every month to honor all our joys for that month. For this month it will be:

January 24



Anniversaries

1/5	Sandy & Lee Schwartz
1/28	Murray & Jerilyn Dimant
1/31	Isabel & Jon Ellis



Yahrzeits

1/1	Fred	Sklar	Cousin	of	Carol	Wagner
1/4	Gloria	Bolnick	Mother	of	Jay	Bolnik
1/4	Marilyn	Seidman Kaplan	Mother	of	Susan	Reckner
1/5	David Jay	Olshina	Father	of	Jodi	Olshina
1/5	Rose	Frye	Relative	of	Christina	Frye
1/5	Ann	Edelson	Grandmother	of	Joel	Edelson
1/6	Sidney	Seidman Kaplan	Father	of	Susan	Reckner
1/8	Marilyn	Gordon	Mother	of	Jane	Hertzberg
1/8	Florence	Plesur	Mother	of	Joe	Plesur
1/8	Morton	Rabinowitz	Father	of	Mark	Rabinowitz
1/9	Harvey	Jacobson	Brother	of	Peter	Jacobson
1/10	William David	Roberts	Father	of	Carol	Roberts
1/11	Schura	Dimant	Mother	of	Murray	Dimant
1/11	Pat	Bricklin	Cousin	of	Steve	Feldman
1/11	Lillian	Shames	Aunt	of	Sheila	Slavkin
1/12	Aline	Brandwein	Mother	of	Anita	Clifford
1/13	Craig Morris	Neuman	Husband	of	Collette	Neuman
1/16	Anna	Pearlstein	Relative	of	Christina	Frye
1/16	Myna	Kalbas	Mother	of	Bill	Kalbas
1/17	David	Sanders	Step Father	of	Sheila	Slavkin
1/17	Tatyana	Gudz	Grandmother	of	Lana	Goldfarb
1/19	Seth	Weiner	Friend	of	Errol	Fishman
1/20	Marilyn	Stockelman	Mother in Law	of	Christine	Stockelman
1/20	Virginia	Finke	Mother	of	Mark	Fink
1/22	Sally	Bloom	Mother	of	Gail	Verlin
1/22	Lazar	Gold	Father	of	Marty	Gold
1/24	Louis	Verlin	Father	of	Michael	Verlin
1/25	Bob	Finkel	Cousin	of	Steve	Feldman
1/25	Aaron	Ferman	Grandfather	of	Joel	Edelson
1/26	Robert	Northrop	Father	of	Rob	Northrop
1/26	Elayne	Raiskin	Mother	of	David	Raiskin
1/28	Amada "Amy"	Ferman	Grandmother	of	Joel	Edelson
1/29	Rhoda	Warg	Mother	of	Suzie	Baylis
1/31	Selma	Sperry	Mother	of	Bruce	Sperry

The dates listed for the Yahrzeits are adjusted yearly according to the Jewish Calendar and may not necessarily coincide with the common date of death. Names are read for Kaddish at the Shabbat before the actual date. If you would like to have the common date listed, please contact the temple office.

Want to advertise in *The Kibbitzer*?

Ad Size	Monthly Rate	10% Discounted (Annual only)
Bus. Card	\$20	\$216
1/4 page	\$40	\$432
1/2 page	\$50	\$540
Full page	\$75	\$810

Special rate for CBS Members — 10% off MONTHLY rate with 6-month commitment.

To reserve your place in the next issue, e-mail the temple office at cbs-admin@hotmail.com or call 813-681-6547.

Babysitters

Contact the temple office for a list of available babysitters. Contact information, qualifications and transportation details are available for each sitter. We will not publish information about our younger members online due to privacy concerns.



ATTENTION! We send *The Kibbitzer* out online. This change has been made to help decrease one of our expenses at Beth Shalom.

However, if you prefer receiving your *Kibbitzer* via the US Mail, please call the Temple at (813) 681-6547 or e-mail the Temple (cbs-admin@hotmail.com) to tell us you **do not** want to get your *Kibbitzer* online. Please help Beth Shalom cut its expenses and receive your *Kibbitzer* sooner.



Thank You.

Now when you shop at smile.amazon.com, your purchases will support **Congregation Beth Shalom Of Brandon Inc.**

[Change your charity](#)



Next, make it easy to return to smile.amazon.com.

Install the AmazonSmile shortcut in your browser.

[Install now for Internet Explorer](#)

Share your support: [f](#) [t](#)

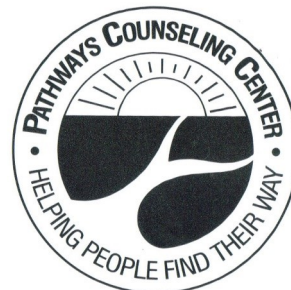
[Dismiss](#)



Congregation Beth Shalom is now participating in Amazon Smile — it's an easy way for CBS members, family and friends to support the temple. Simply use the following link:

<http://smile.amazon.com/ch/59>

-3026396 and shop, shop, shop!



Marriage, Family, & Individual Counseling



Adolescents 13 Yrs Old to Adults



Evening & Weekend Hours



Most Major Insurance Accepted

813-681-7441

108 Mason St., Brandon, FL

Brandon Foot Care Center

Larry A Kaler, DPM

Foot and Ankle Specialist

BrandonFoot.com

Lumsden Executive Park

669-A W Lumsden Rd
Brandon, FL 33511

Phone: (813) 654-3354

Fax: (813) 653-9177



Congregation Beth Shalom
of Brandon

January 2020

Sun	Mon	Tue	Wed	Thu	Fri	Sat
			1 New Years Day HCPS Winter Break	2 HCPS Winter Break	3 7:30 PM Erev Shabbat Service HCPS Winter Break	4 10AM Taste of Tanach
5 9:30 AM Religious School	6 HCPS Winter Break	7 Board Mtg	8 Membership Mtg	9 TRA Meeting @ Rodeph Sholom	10 7:30 PM Erev Shabbat Service Kibbitzer Deadline	11
12 9:30 AM Religious School Hadassah - Mahjong with a twist	13 CBS Membership Cruise	14 CBS Membership Cruise	15 CBS Membership Cruise	16 CBS Membership Cruise	17 7:30PM Erev Shabbat Shabbat Service CBS Membership Cruise	18 CBS Membership Cruise
19 No Religious School Let's Chat 3 PM	20 Page Tuners 6PM MLK JR Day	21	22 Ritual Mtg LLL Fundraising Mtg	23 7 PM We're Not Getting Any Younger—Part 1	24 7:30 PM Simcha Shabbat Service	25
26 9:30 AM Religious School Federation President's Dinner TB/JEC—TaBshevat for 6th grade	27 International Holocaust Remembrance Day	28	29	30	31 7:30 PM Erev Shabbat Service	



NONPROFIT
ORG
U.S. POSTAGE
PAID
PERMIT NO
6717
TAMPA FL

Address Service Requested

Inside Scoop

<i>Membership</i>	<i>2</i>
<i>Life Long Learning</i>	<i>6</i>
<i>Religious School</i>	<i>7</i>
<i>Page Turners</i>	<i>8</i>
<i>Dinner With The Tribe</i>	<i>8</i>
<i>Ladies Night Out</i>	<i>9</i>
<i>Calendar</i>	<i>15</i>

Welcome the Stranger...
Stranger No More.