

The Kibbitzer

Congregation Beth Shalom

706 Bryan Road, Brandon, FL 33511
Phone (813) 681-6547, Fax (813) 681-7517
www.BethShalom-Brandon.org

January 2017 Volume 27, Issue 8

Rabbi

Betsy Torop 541-3751

Administrative Director

Mags Oldman 681-6547

Cantorial Soloist

Sandy Santucci 681-6547

Religious School Administrator

Amy Weinstein 685-7064

Executive Board of Directors:

President

David Friedman 643-5495

1st VP

Gerry Pliner 436-0080

2nd VP

Toby Koch 654-0877

3rd VP

Lauren Weisman 352-4574

Treasurer

Michael Barnett 545-6800

Secretary

Dan Weinstein 685-7064

Past President

Jeff Newman 758-4120

Members at Large

Stephen Criden 653-3186

Seth Dugan 400-3609

Scott Hopkins 245-5573

Hank Mart 486-3709

Steve Slavkin 323-0541

Christine Stockelman 684-0276

From the Rabbi

Martin Luther King Jr. Day is "Our" Holiday Too



I am old enough that I was long out of school when Martin Luther King, Jr., Day became a national holiday in 1983. But for my three kids, the time around MLK day always involved learning about the great civil rights leader along with other famous heroes of the era like Rosa Parks. They would read books, write essays and memorize a few lines from King's famous "I have a dream" speech. I was pleased with this learning, an important part of our history as a nation.

We Jews are part of that history as well. There were prominent Jews involved with the civil rights movement. Rabbi Joachim Prinz introduced King at the March on Washington. Rabbi Abraham Joshua Heschel marched arm in arm with King in Selma at the Edmund Pettus Bridge (later uttering the famous words, "I felt like my feet were praying"). Andrew Goodman and Michael Schwerner – two young Jewish men from New York, who, along with James Chaney were registering voters in the South – gave their lives to the quest for equal treatment.

And yet, we as Jews tend to rest on the achievements of the past. When asked about Jewish commitment to racial equality, we all too often affirm this commitment based on actions of 50 years ago. These actions were real and important, but they no longer provide a sufficient basis to claim a meaningful relationship. To realize the potential of work begun years ago, we must ask ourselves about today's challenges around the pursuit of racial equality: increased incarceration rates among African Americans, voter suppression and discrimination. The civil rights work that we celebrate on MLK Day remains undone; that is a truth that we – committed to the Jewish belief that we must repair an imperfect and the American belief that our country must give equal access and opportunity to all – should not gloss over.

If we are honest, in recent years the relationship between the Jewish community and the African-American community has not been as solid as it once was. I am deeply saddened by this reality. As in many things, I believe the way forward is in rebuilding relationships, establishing a foundation for conversation and dialogue. The Tampa Jewish community is already taking steps in that direction. Under the leadership of Jon Ellis, chair of the JCRC (the Jewish Community Relations Council), the Tampa Rabbinical Association is taking initial steps to find partners in the African-American community to build those relationships. These dialogue groups existed many years ago, and it is time that we rebuilt them. One of our area rabbis will be giving a blessing at the annual Interfaith MLK Jr. Interfaith Service at the Allen Temple AME church. This is a service open to the community. When I attended a number of years ago, it was filled with joyous singing and meaningful speakers. I urge you to attend. It will take place Monday, Jan. 16, at the AME Church, 2101 Lowe St., Tampa, at 4:30 pm.

Neither of these steps – in and of themselves – are radical actions, nor will they create instant change or partnerships. But they have the potential to begin to build relationships that can, in turn, lead to significant steps forward in rebuilding a meaningful partnership with the African American community around issues of common concern. We may not be able to re-create the partnership of the 1960s, nor should we want to. We go forward in life, not backward. We create new possibilities and opportunities that respond to contemporary realities. In the words of our prayer book *Mishkan T'filah* – "Wherever we go it is eternally Egypt; there is a better place, a promised land; the winding way to that promise passes through the wilderness; there is no way to get from here to there except by joining hands, marching together." I look forward to hearing your thoughts.

FROM THE PRESIDENT - *David Friedman*

I hope you had a wonderful New Year's celebration! If you are into making resolutions, why not consider coming to more Friday night services as one of them?

So why go to temple? Maybe you're thinking, "I've gone to services for over 30 years. I've heard more sermons than I can count and can't remember one. I'm wasting my time, and the rabbis are wasting their time giving them."

Think about it this way. I have been married for more than 15 years. In that time, Carol Anne has cooked more than 11,000 meals. For the life of me, I cannot recall the entire menu of a single one of those meals. But I do know this. They all nourished me and gave me the strength I needed. If not for these meals, I would be physically dead today. Likewise, if I had not gone to temple for nourishment, I would be spiritually dead today.

When you are down to nothing, G-d is up to something. Faith sees the invisible, believes the incredible and receives the impossible. Thank G-d for our physical and spiritual nourishment.

If you read my last article, it began (paraphrasing) like this, "I'm writing this article from the Smoky Mountains. We are on vacation just outside of Gatlinburg. One ear is focused on the sounds of the rushing water in the creek that runs outside our condo."

That was five short weeks ago. The building we were in, that I have memories of going back 32 years, is now gone. It, along with four other buildings in the resort burned down in the recent "Gatlinburg fire." Yes, this is upsetting, but perhaps G-d is up to something. The fire was not an act of G-d. It was arson, but it still brought me down. Maybe, G-d is

up to something.

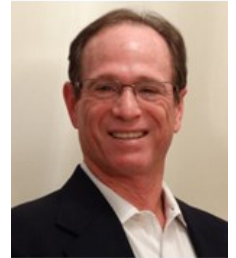
My faith has had a calming effect. As I told my daughter, who had spent the first ten years of her life trick-or-treating in Gatlinburg every Halloween, "They will rebuild. Perhaps the new design will even include an elevator in the plans! We'll make new memories."

"A Rosen by any other name smells as sweet." On a lighter note, the day after Thanksgiving, my brothers and I made our mother a dinner party for her 90th birthday. One of my cousins who joined us and loves genealogy shared some documents that he'd discovered. Turns out, our grandfather on my father's side travelled with his father to the U.S. from Zagare, Lithuania. My great grandfather's name was (drum roll) Morris Orolovitz! Growing up, I hated it when people mispronounced my last name, and wished it was spelled Freedman, instead of Friedman. Could have been a lot worse!

Lastly, I'm told the first President's Dinner was a huge success! One gentleman even told me, "I loved your sautéed carrots, and I don't eat vegetables!" I'll respect his privacy and won't divulge his identity. I'll just say his name rhymes with Peeve Meldman.

I could not have pulled this off without the help of the following people: Gerry and Judith Pliner, Steve and Anna Feldman, Gail and Michael Verlin, Steve Slavkin, Andrea Chassen, and Carol Anne Friedman. Thank you!!

See you in temple.



Congregation Beth Shalom provides a meaningful spiritual home for people of all ages and levels of knowledge, a place to learn and to question, a place to worship and to celebrate, and a place to find a community that cares.

We offer:

- ✧ **Friday worship services at 7:45 PM**
- ✧ **Religious school pre-kindergarten through tenth grade**
- ✧ **Complete B'nai Mitzvah preparation**
- ✧ **Youth group programming**
- ✧ **Adult Education classes**
- ✧ **Community-wide events, including Mitzvah Day**



Upcoming Dates to Remember

- **Sunday Jan. 8, 4 p.m.:** Jewish Art History lecture (rescheduled from September.) Guest speaker is Susan Fader. Details on page 6.
- **Friday, Jan. 13, 745 p.m.:** Choir Shabbat. Details on page 10.
- **Tuesday, Jan. 17, 7 p.m.:** iEngage series. Topic: *Justice: X Happened* looks at the claim that a wrong was perpetrated as part of Israel's establishment and the ways in which this kind of controversial claim can be addressed in a genuine and morally appropriate manner.
- **Friday, Jan. 20, 7 p.m.:** Shabbat @ the Ranch. The Bolnicks have graciously invited us to their home again! The address is 6606 Flicker Court, Seffner. Bring your own seating, a blanket for the weather, and a snack to share for oneg. Snacks will be at 6 p.m.; service begins at 7 p.m.
- **Saturday, Jan. 21, 10 a.m.:** Bible and Bagels. topic is Parashat Shemot: Moses—Son, Husband and Father.
- **Sunday, Jan. 22, 9:45 a.m.:** Torah Tots
- **Friday, Jan. 27, 7 p.m.:** Early Shabbat
- **Sunday, Jan. 29, 3 p.m.:** International Holocaust Remembrance Day at the Italian Club (1731 E 7th Ave. Ybor City, Tampa.) Details on page 8.
** The Israel Film program scheduled for the same day has been rescheduled to the spring.
- **Sunday, Jan. 29, 10-11 a.m.:** The Shiva House program. What do I say to a mourner? Do I have to cover the mirrors? A step-by-step guide through Jewish customs in the days after the funeral.
- **Friday, Feb. 3, 6 p.m.:** Our next congregation potluck Shabbat.
- **Sunday, Feb. 26, and Sunday, March 5, 4 – 5 p.m.:** An Exploration of Jewish Music. Details on page 8.

*Religious Education Calendar, page 7;
Full calendar, page 15*

Peter A. Jacobson, M.D.

*Internal Medicine &
Cardiovascular
Disease*

500 Vonderburg Dr. E 303

Brandon, FL 33511

(813) 681-5702

January Oneg Schedule

There can be no joy without food and drink. — Talmud, Mo'ed Katan

THANK YOU! to the following people who will host an oneg Shabbat in January.

• **Jan. 6:** Sheila and Steve Slavkin will host the oneg as a temple mitzvah.

• **Jan. 13:** Jan and Bill Golden will host the oneg as a temple mitzvah.

• **Jan. 20:** Bonnie and Jeff Jacob will host the oneg as a temple mitzvah.

• **Jan. 27:** The 6th grade parents will host the oneg for the family service. Additionally, Murray and Jerilyn Dimant will be celebrating, along with their daughter, Loranah Dimant, and son-in-law, Joshua Sklaroff, the naming of their granddaughter, Adi.

SIGN UP TO SPONSOR AN ONEG!

Contact Judith Pliner at (813) 436-0080 or email her at gp@pliner-inc.com if you are interested in hosting. Thanks to everyone who is helping out with the onegs in the upcoming months.

Your Oneg Committee,

Anna Feldman, Judith Pliner, and Anita Hoffman

The Kibbitzer

Volume 27, Issue 8
Published Monthly by
Congregation Beth Shalom
706 Bryan Road
Brandon, FL 33511
Phone 813-681-6547
Fax 813-681-7517
Email: cbs-admin@hotmail.com

Email and articles for publication:
TheKibbitzer@hotmail.com
For current news and events
see the congregation's website:
<http://www.bethshalom-brandon.org>

Mags Oldman, Administrative Director

813-681-6547 • cbs-admin@hotmail.com

Office hours:

subject to change without notice, please refer to eBlast
Call the Office for schedule.

Weekly Email Blast submissions

bethshalominfo@gmail.com

eBlast deadline is Wednesday at 6 pm

INCLUSION TASK FORCE - Amy Weinstein

Looking Beyond Accommodations

Some of you may have noticed our new sign; it includes a wheelchair with a Star of David in its design. In addition, we had signs posted during the High Holiday services indicating that certain chairs were available if a person needed additional support. The signs are great. They indicate that we are indeed welcoming, and we are willing to make accommodations to allow people with special needs to participate in our services and programs. This is an important first step. Instead of just inviting people to attend services and/or programs, we could be saying "We invite you to be a part of our vibrant community." Or better, "We invite you to join us in creating community." In order to accomplish this feat, we need to do more than simply "accommodate."

Often, disabilities are viewed as hurdles that must be overcome, and the community is called upon to accommodate. The goal is to help a person compensate for their disabilities so that they can be a part of what we do. An easy example is to build ramps which provide an accommodation and allow people to participate. Accommodations are important, but they fail to truly expand community.

We need to think beyond accommodations and attempt a truly inclusive community, where the goal is to remove boundaries between people. We can do more than accommodate. We can strive to be fully open, to be willing to be changed and actually include others. Unlike accommodations, which become unnecessary once certain changes are made, the process of building an inclusive community never ends. There is always more we can do.

To be truly welcoming, we must value the input of every person who joins us. We must be patient and compassionate when interacting with everyone. It is essential that we understand that there are people around us with disabilities, some of which are easily seen and some of which, like mental illness, can be hidden deep below a person's surface.

The undertaking of our Inclusion Task Force is not limited to creating physical accommodations at Congregation Beth Shalom. It is concerned with strengthening community on all its diverse levels. We should reflect on our inclusiveness, build awareness about what needs to exist so that we can all become more sensitive, and initiate programs that include more people in the process of building community.

Congregation Beth Shalom - Donation Form

At times of sorrow & memory, as well as at times of joy, tradition teaches us that we honor others by giving of tzedakah. Please return your completed donation form to the temple office.

In Memory of _____

In Honor of _____

Donor's Name: _____

Address: _____

\$18 _____ \$36 _____ \$54 _____ \$180 _____ Other _____

Designated Fund:

- | | |
|---|---|
| <input type="checkbox"/> Bricklet | <input type="checkbox"/> Yahrzeit |
| <input type="checkbox"/> Endowment Fund | <input type="checkbox"/> Rabbi's Discretionary Fund |
| <input type="checkbox"/> Prayer Book | <input type="checkbox"/> General Fund |

- ☐ My check is enclosed
☐ Please bill me

"Tzedakah weighs as much as all the other commandments combined" - Talmud
 Congregation Beth Shalom 706 Bryan Rd. Brandon, FL 33511 813-681-6547

Committees/Chairpersons

Building/Capital Fund

Peter Jacobson

Building & Grounds*

Seth Dugan

Caring

Christine Stockelman

Finance*

Jon Ellis

Fundraising*

Michelle McCormick, Kate Swedlow

Lifelong Learning*

Sheila Fishman

Long-Range Planning*

Open

Membership*

Gail Verlin & Judith Pliner

Oneg

Anna Feldman, Anita Hoffman,

Judith Pliner

Publicity

Andrea Chassen

Ritual*

Cynthia Goldstein

Social Action*

Scott Hopkins

Youth Education*

Lea Garbett & Natasha Rieger

Youth Group*

Advisor—Mags Oldman

President—Sarah Smith

** Ex-officio voting Board member
(each committee only gets one vote)*

OTHER PROGRAMS

CBS Players

Anna Brubaker,

CBS Singles Over 50

Anita Clifford

Chavurah

Phyllis Newman

Dinner with the Tribe

Phyllis & Milt Newman

Email Blast

Mags Oldman

Going Green

Jim & Sandee Pelk

Kibbitzer/Bulletin Editor

Lea Garbett

Kolot Shalom Choir

Joan Frankel

Library

Anita Hoffman

Page Turners

TBD

Web Administrator

Mags Oldman

Yarn Mavens

Phyllis Newman

Join with CBS in offering congratulations and recognition to the following members on their accomplishments:

KUDOS

- ♦ Kudos to **Anna Feldman, Steve Feldman, Janice Perelman, Jan Golden, Ruth Goldberg,** and **Andrea Chassen,** for helping keep our temple office accessible and functioning during our administrator transition, as well as **Jerilyn Dimant** and **Isabel Ellis** for making themselves available as well.
- ♦ Kudos, to **Sheila Slavkin, Sheila Fishman, Toby Koch,** and **Steve & Anna Feldman** for helping with our search committee.
- ♦ Kudos to **Amy Weinstein** and the **Religious School Parent Association** for a fun-filled Chanukah celebration.



MAZELS

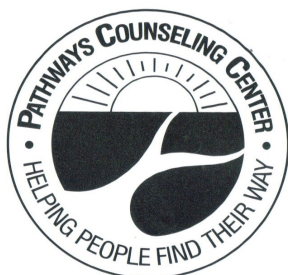
- ♦ Mazel tov to **Sherry Leybovich,** who was chosen as one of the Top 25 All Star Travel Agents of 2016 within the United States as selected by the editors of *Travel Agent Magazine*.
- ♦ Mazel tov to **Jacob Garbett** for winning the Roland Park K-8 Magnet IB World School geography bee.

Do you know a CBS member who should be congratulated for a special accomplishment?

MEMBERSHIP

Best wishes to **EVERYONE** at Congregation Beth Shalom for a **HEALTHY AND HAPPY 2017!!!**

Gail Verlin and Judith Pliner
Membership Co-Chairmen



Marriage, Family, &
Individual Counseling



Adolescents 13 Yrs Old to Adults



Evening & Weekend Hours



Most Major Insurance
Accepted

813-681-7441

108 Mason St., Brandon,
FL



ILENE R. SCHWARTZ
Realtor®
(813) 625-2942

ileneRschwartz@gmail.com
Fax: (813) 655-1057
www.realtorilene.com
316 E Bloomingdale Ave, Brandon, FL 33511



Each Office is Independently Owned And Operated



BEN FERNANDES & KEITH BALOT
OWNERS

phone: 813.657.6200
fax: 813.413.2045
Keith@krkvalrico.com.

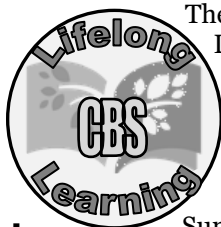
4321 Lynx Paw Trail
Valrico, FL 33596
Ben@krkvalrico.com

www.krkvalrico.com

Are You Supporting our Commercial Advertisers?

We urge all of our readers to patronize our commercial advertisers and, when you see them, to thank them!

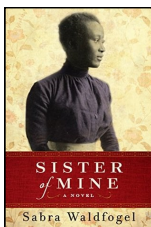
LIFELONG LEARNING—Sheila Fishman



The 2016 programming offered by the Lifelong Learning Committee was amazing!! We learned, we laughed, and we, of course, ate. The committee is pleased to announce the 2017 calendar of events will provide so much more.

- Sunday, Jan. 8, at 4 p.m., we will be offering the History of Jewish Art. This in-depth presentation will look at Jewish art from its origins to the 16th-18th centuries and then the 1930s. We will learn about artists of victims and survivors of WWII and how their art reflects their individual experiences. The presentation will end with a look at artwork by Jewish artists of the 1950s thru present time. Our presenter is Susan Fader, a lifelong professional artist. Please contact the Congregation office at 813-681-6547 or Sheila Fishman, Committee Chairperson, at 813-833-7843. A \$10 donation to the temple is recommended. This event will be followed by Dinner with The Tribe at Square One Burgers, 2042 Badlands Drive, Brandon.

- Monday, Jan. 16, at 6 p.m., Page Turners will meet in the temple library. The book being discussed is entitled *Sister of Mine: A Novel* by Sabra Waldfogel. This is a historical novel about a Jewish plantation owner and his family, the life of these affluent Jews, and their slaves. A light dinner will be served by our moderator, Sheila Fishman.



- Our iEngage program continues on Tuesday, Jan. 17, at 7 p.m. iEngage is an exciting program is designed by the Shalom Hartman Institute in Jerusalem and stimulates meaningful, knowledgeable dialogue about Israel. (The next program will be offered Feb. 14, 2017 at 7 p.m.)

- We will be offering Bibles and Bagels on Saturday, Jan. 21, at 10 a.m. We will be addressing Parashat Shemot: Moses—Son, Husband and Father, and we will be having a little nosh!

- Sunday, Jan. 22, we had planned to present A Look at Israel through Film with Rina Donchin. This event has been moved to Sunday, May 7, at 3:30p.m.

- Sunday, Jan. 29, at 10 a.m., we will be offering additional programs on the Practical Explanation of the Customs of Death and Mourning. Our topic for that event is “The Shiva House.” Rabbi Torop will discuss the step-by-step guide through Jewish tradition.

- Sunday, Feb. 12, at 4 p.m., we will be introducing Rabbi Ed Rosenthal, Executive Director for Hillels of the Florida Suncoast. The topic is “From Scubi Jew to BDS—Engaging the College Students of Today.” Rabbi Rosenthal will share insights about everything from confronting the Boycott, Divestment and Sanctions (BDS) movement on campus to modern explorations of spirituality in unique underwater programs.

- In February, we will begin An Exploration of Jewish Music with Cantor Tanya Greenblatt. We will be learning about Jewish music through the ages—from ancient traditions to contemporary trends. Our first class will be offered Sunday, Feb. 26, from 4-5 p.m.

Retirement is a journey. Not a destination.

A sound financial plan starts with knowing what you are planning for. Call me today to discuss your retirement dreams and how you may be able to



**FOCUS WEALTH
STRATEGIES, LLC**

FINANCIAL PLANNING | INVESTMENT MANAGEMENT

3447 Brook Crossing Dr.
Brandon, FL 33511

Hank Mart, ChFC®, CASL®

Financial Advisor

813-486-3709

Hank.Mart@investmentcenters.com

Securities, advisory services and insurance products are offered through Investment Centers of America, Inc. (ICA), and member FINRA/SIPC and a Registered Investment Advisor, and affiliated insurance agencies. ICA and Focus Wealth Strategies, LLC are separate companies.

Physician Care WALK-IN CLINIC

LAB & X-RAY • EKG
NO APPOINTMENT NEEDED

Family Practice And Internal Medicine

JERRY A. WISHIK, M.D., P.A.

Diplomate American Board of Internal Medicine

620 VONDERBURG DRIVE
BRANDON, FLORIDA 33511

(813) 684-1777
FAX: (813) 689-9559



EDUCATION - Amy Weinstein

Happy New Year!

This school year seems to be flying by. As you may remember, we began our sessions earlier this year in accordance with the public school calendar. That being said, we are halfway through our sessions.

Unfortunately, we sometimes notice inconsistencies regarding attendance during the winter/spring months. Please take the time to review our attendance information.

Our class runs Sunday from 9:30 a.m. – noon for all students. Our 4th, 5th and 6th graders also attend Wednesdays from 6:15-7:45 p.m. Our Judaic curriculum builds upon past lessons. If a student has multiple absences, it will result in gaps in their Jewish Education. The Hebrew curriculum is a prayer-based one. Our students are exposed to Hebrew letters and vowels with the goal of giving them the skills to be active participants in Shabbat and holiday services. We have a limited amount of time with our students. If they do not attend regularly, their Judaic and/or Hebrew education may be compromised.

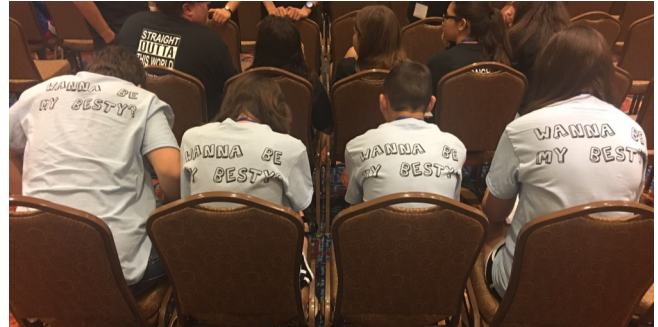
Students are expected to make up any missed assignments due to an absence. Repeated absences may result in additional assignments or a project to cover the missed work.

Thank you for your continued support. We value the time we have with your child and vow to make every session worthwhile!

Thanks to our fabulous Parent Association for working to ensure our Chanukah celebration was a success! Please contact Lea Garbett and/or Natasha Rieger to become involved.

Important January Dates

- **Sunday, Jan 1:** No RS
- **Wednesday, Jan. 4:** HC and Confirmation
- **Sunday, Jan. 8:** RS
- **Wednesday, Jan. 11:** HC
- **Sunday, Jan. 15:** No RS: teacher in-service day
- **Wednesday, Jan. 18:** HC and Confirmation
- **Sunday, Jan. 22:** RS and Torah Tots
- **Wednesday, Jan. 25:** HC
- **Friday, Jan. 27:** 7 p.m. family service
- **Sunday, Jan. 29:** RS and 6th grade TBJEC field trip



BESTY BEAT

Happy New Year BESTYies! By now we'll have come back from Winter Kallah - five fantastic days of Jewish teens getting know each other and themselves, exploring their faith and traditions, and learning leadership skills along with how governmental processes work (regional officer campaigns and elections as well as NFTY constitutional amendments are proposed, debated, and voted on at Asefah each winter session.)

On **January 11**, we'll host our overdue Chanukah gift exchange! Bring a wrapped gift (value between \$10-15) and we'll have some fun! And on **January 15th** we'll be doing a field trip to Orlando for a fun scavenger hunt through Disney properties. A head count is VERY important for this event!

6th - 8th graders: You can still register for Hatikvah Kallah - up to Jan. 11th! This is a fun, weekend event just for your age group to introduce you to NFTY Kallah Life. It will be held in Tampa, Feb. 3-5th and attendees will be home housed with the host temple.

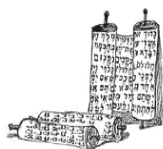
8th - 12th graders: (YES—8th graders too—NEW this year!) Registration is also open for Spring Kallah (early bird ends Jan. 4 and regular rate ends Feb. 8) - which will be held March 3 - 5th closer to Miami. You can also still register for NFTY's National Convention through Jan. 5. This convention will be held in Chicago Feb. 17 - 20th. An adult chaperone will attend all Kallahs, but not national convention - unless at least 5 teens from BESTY will be attending.

Bar/Bat Mitzvah Listings

If you would like to have information on your child's upcoming Bar or Bat Mitzvah listed in *The Kibbitzer*, please submit an article and picture (digital if possible) to thekibbitzer@hotmail.com by the second

B'nai Mitzvah Tutoring

Contact Keren Vergon at
813-785-6324 or kvergon@verizon.net.

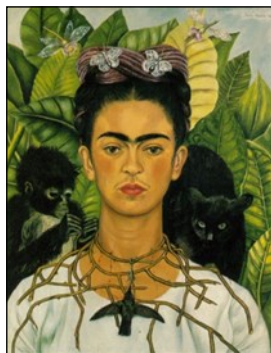


THE FUN STUFF

Singles Over 50 - Anita Clifford

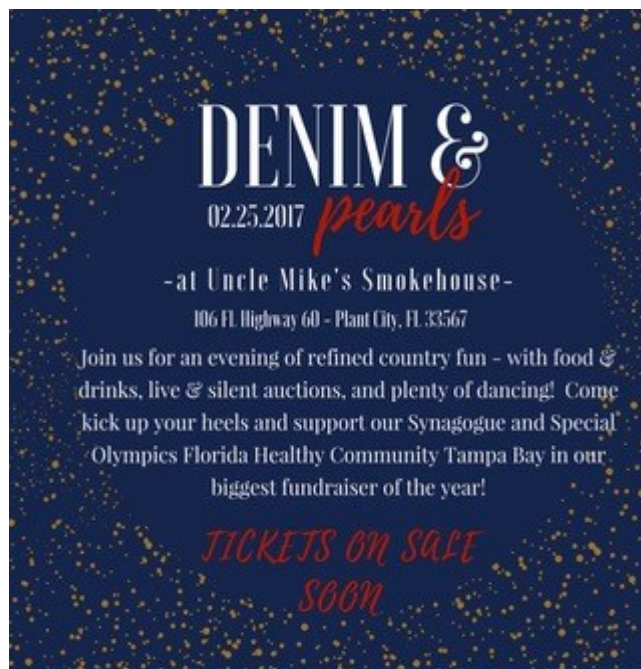
• Sunday, Jan 8, from 4 – 6 p.m., Tampa Jewish Singles, a 50+ Jewish Singles Meetup group, will host a talk on Jewish Art History, from its origins through current times. Our instructor is Susan Fader, daughter of Holocaust survivors, a life-long professional artist with a degree from the Philadelphia College of Art. Suggested donation is \$10. For more information contact Anita Clifford, niewdnarb@yahoo.com.

• Thursday, Jan. 19, at 5 p.m. we will visit the *Frida Kahlo at The Dali* showcases the extraordinary career and life of the acclaimed 20th century artist, whose dream-like work suggests that love and suffering create a new sense of beauty. More than 60 Kahlo pieces are on display, including 15 paintings, seven drawings and numerous personal photographs from the celebrated female artist and influential icon. The exhibition extends outdoors, where a special collection of flowers and plants representative of those in Kahlo's own garden at Casa Azul, her home in Mexico, graces the grounds of our Avant-Garden. We'll see this major exhibit on a Thursday evening when Dali prices are reduced to \$10. You must RSVP to Anita Clifford, niewdnarb@yahoo.com, if you want to join us.



• Join Tampa Jewish Singles as we attend a very moving International Holocaust Remembrance Day on Sunday, Jan. 22, at 3 p.m. (Doors open at 2 p.m.) This event will be hosted by the Tampa Bay Consular Corps and held at the Italian Club, 1731 E 7th Ave., in Ybor City. To attend, send an email request with your name, e-mail address, phone number, and address to Hon. Vincent Genovese, vgenovese@italconstampa.com. Also, please RSVP to Anita Clifford, niewdnarb@yahoo.com, and she will save a seat so we can all sit together. The same event will have a presentation of the awards to the winning students of the essay contest aimed at combating anti-Semitism. To learn more on prior years' events, you may visit our website:

February 25!



Thanks to the tremendous support of our temple family, we are moving our fundraiser this year - we need more space!

Join us at Uncle Mike's Smokehouse for DENIM & PEARLS - an evening of refined country fun! Located on Highway 60, just 7 miles from the synagogue... we'll be dining, drinking and dancing - all to raise money to support Congregation Beth Shalom and Special Olympics Florida Healthy Community Tampa Bay!!! It's going to be GREAT!



An Exploration of Jewish Music

Join Cantor Tanya Greenblatt to learn about Jewish music through the ages – from ancient traditions to contemporary

- Friday, Feb. 10, 7:45 p.m., Cantor Greenblatt will help lead Shabbat services.
 - Sunday, Feb. 26, 4-5 p.m., program begins
 - Sunday, March 5, 4-5 p.m., program continues
- R.S.V.P. required to the temple office



Calling All Congregants!

The planning for Denim and Pearls our annual fundraiser continues. We are in need of a "street team" — we need people to contact their local retailers for donations to help make our silent auction a success.

We are also in need of beer and wine donations.

If anyone can help, donate or has a connection for beer and wine please contact Michelle McCormick at [813-283-8862](tel:813-283-8862).

Level 2 Hebrew for Adults

If you want to strengthen your Hebrew reading skill for increased fluency, this class is for you.

Registration in advance required:
Call the Temple Office – 813-681-6547

Teacher, Rudina Richter

Sunday mornings 9:45-11:15

Women's Health & Wellness

INDIVIDUALIZED OB/GYN CARE

- Weight-loss program
- In Office Essure Sterilization
- In Office Endometrial Ablation
- Botox/Dermal Fillers/Facial Peels
- 3-D Ultrasound
- Outpatient DaVinci hysterectomy

Stephen Zweibach, M.D.
Natasha Champion, M.D.
Mariel Rotundo-Patino, D.O.

Call 813-571-2777

today to make an appointment and start your wellness journey

2 locations to better serve you
815 S. Parsons Ave, Brandon, FL
13148 Vail Ridge Dr, Riverview, FL

Se habla espanol

www.whnw.net

CBS LIBRARY UPDATE

Calling all bookworms! The CBS Library still needs bookends in the library and any books with any references to Judaism. All donations are appreciated!



Your 100% Satisfaction is Absolutely Guaranteed!

Clarke Automotive Systems

If you have a problem with your car, let us give you our honest, expert & straightforward advice so the job is done right—the first time!

Bob Clarke
(813) 685-2939

131 Central Ave
Brandon, FL 33510

CBS ON FACEBOOK

Our congregation has a few places to find us on Facebook! All three of the following groups require approval to join:

- ✓ **Congregation Beth Shalom of Brandon**
- ✓ **Congregation Beth Shalom of Brandon Religious School Parent Association**
- ✓ **Youth Group**

Then there is our page:

Congregation Beth Shalom of Brandon



KOLOT SHOLOM NOTES

We are really excited about the new music we've been practicing and we invite everyone to join us at the next Choir Shabbat on Jan. 13.

Many people have expressed their love of music to me, and often they say they would love to sing with the choir if they could read Hebrew. Let me put that worry to rest. Reading Hebrew is not a necessary requirement to sing in Kolot Shalom. We have transliteration copies of all music.

The only requirement for participating in the choir is being able to sing *Happy Birthday* on pitch. The rest we can teach you. So if you are one of the closet singers

in our congregation who truly loves learning new service music and joining a fellowship that is warm, caring and fun, Kolot Shalom is for you.

And if you don't know what voice part you sing, we'll place you in a spot as cozy as a missing puzzle piece. Come, sing and lift your voice in worship. You'll be so glad you did!

Rehearsals are on Mondays at 7:30p.m. For further information, contact Joan Frankel at 813-938-4123.

Shalom,
Joan E. Frankel

CBS Annual Retreat

Saturday, March 4, 2017

Our annual retreat is once again planned for Cedarkirk Camp in Lithia.

This day-long family program will have adult learning programs led by Rabbi Torop and an exciting children's program to include crafts, learning and lots of outdoor fun. Teens are welcome to participate in the adult or children's programs.

Think campfire, s'mores, singing, sports, great food and services on the banks of the Alafia River!



Let's Eat Together!

Who: Everybody!

When: Friday, Feb. 3, 6:00 pm

Where: CBS

Why: Because we can!



We are having a Shabbat potluck dinner before evening services. Bring the family and enjoy a little fellowship with friends at the temple! Please bring a dish to share! This will be a dairy meal, meaning no meat with the exception of fish (but no shellfish, please). Dessert will be included with the oneg following services. See you there!

To sign up, please email

cbs-admin@hotmail.com or kaswedlow@gmail.com

or online at <http://www.signupgenius.com/>



BLOOMINGDALE PIZZA
"BLOOMINGDALE'S NEIGHBORHOOD PIZZERIA"

684-7466

4334 Bell Shoals Rd.
Valrico, FL 33594
Sun.-Thurs. 11-10:00
Fri.-Sat. 11-11:00
Delivery available until
30 min. before close.

Doogie Entertainment

DJ and Party Services

Weddings

Bar/Bat Mitzvahs

Children's parties

80's & 90's video parties

Office Parties

PA system rental/set-up



Phone: 813-400-3609

www.DoogieEntertainment.com

E-mail: Doogie@DoogieEntertainment.com

Pleased to offer a 10% discount on services to members of Congregation Beth Shalom

HIGH HOLY DAYS BRIDGE BUILDERS 5777

MITZVAH BRIDGE

Anonymous	Bill & Jackie Kalbas
Steve Billor	Randy & Daniel Lannak
Anita Clifford	Steve & Sheila Slavkin
Mark & Sheryl Finke	Bruce & Janice Sperry
Errol & Sheila Fishman	

CHAI BRIDGE

Anonymous (3)	The Oldman Family
Richard & Harriette Bauman	Joe & Carole Plesur
Russell & Elise Berman	David & Rudina
Zohar & Sharon Elazar	Richter
Stephen & Anna Feldman	Jonathan & Shayna Singer
Joan Frankel	Brian & Arlene Slater
Dave & Carol Anne Friedman	Steve & Sheila Slavkin
Jeff & Sara Goodman	Melissa Villasin
Milt & Phyllis Newman	Dale Wozniak

CHAVERIM BRIDGE

Anonymous	Jerry & Jamie Holschauer
Adam Cohen	Janice Perelman
Joel & Laurie Edelson	Jarett & Natasha Rieger
Betsy Glickman	James & Lisa Smith
Ruth Goldberg	Michael & Martie Spaier
Renate Greenfield	Keren Vergon & Anna Brubaker

The High Holy Day Appeal for 5777 is open through the end of January. To make a contribution, please contact the office. This does not include donations made through the Book of Remembrance or Adopt-a-Book Campaigns, nor does it include non-members. If there are any errors or omissions to this listing, please notify the office as well.

SPECIAL EVENT DONA-

*Please Support the Professionals
and Retailers Who Support*

CBS



When it's time to pick a vendor or hire a professional for services, keep in mind these generous businesses that support CBS. Thank you to the following businesses and friends for their participation in Art After Dark.

Financial Sponsors

A Friend of Bill W.
Abisa Consulting—Nick & Tanya Hernandez
Allbay Insurance Group
Anonymous
Barndollar Financial
Clarke Automotive
Colorado Health & Youth Dermatology Centers
Jon & Isabel Ellis
Family Implant & Cosmetic Dentistry – Dr. Sandy Schwartz
Anna & Stephen Feldman
Sheila & Errol Fishman
Gulfside Pool & Spa
Hillsboro Memorial Funeral Home
Peter & Diane Jacobson
Jan Pro Cleaning Systems
Kevin Frye Entertainment
Kids R Kids – Keith & Debra Balot
Toby Koch & Alan Weiss
Milt & Phyllis Newman
Pathways Counseling Center – David & Rudina Richter
Jim & Sandee Pelk
Gerald & Judith Pliner
Puff'n'Stuff Catering
S.A.I., Inc.
Shaughnessey Law, Monica A. Frost, Esq.
Marla & Owen Smith
Team Imagine / Century 21 Beggs –
Sarah Meyers & Molly Rizzi
The Tooth Caboose – Dr. Steve Slavkin
Leslie & Clifford Will
Women's Health & Wellness – Dr. Steve Zweibach

InKind Sponsors

Brandon Honda
Brittany Bennett, CPA
Doogie Entertainment / Seth & Paige Dugan
Focus Wealth Strategies / Hank Mart
Proforma M3
Table Garnish / Rene Vojnovic



Sarah Meyers 813-486-8965
SarahMeyers@c21be.com

Molly Rizzi 813-446-5445
MollyRizzi@c21be.com

We can help with all your real estate needs

DONATIONS

Congregation Beth Shalom accepts donations for many purposes, with a variety of opportunities for donors to support the good works of the Temple. You may contact the office either by phone or email to make a contribution, or head to our website to make a secure online payment through a PayPal account or by using a credit card.

Funds:

- **General Fund** (unrestricted): An unrestricted gift to the General Fund allows the temple to use those funds wherever they may be needed most. This fund incorporates contributions received from our High Holy Day Appeal, Yahrzeit donations, Bricklets, Adopt-A-Book, Tree of Life (unless otherwise indicated) and other non-restricted gifts.
- **Building Fund:** A fund to ensure the continuing physical growth of our spiritual home. Intended for capital improvements and major building repairs.
- **Endowment Fund:** Gifts to this fund are placed in an investment account and temporarily restricted or can be defined/restricted by the donor. This fund ensures the future of our temple.
- **Religious School Scholarship Fund:** These funds will be made available to Religious School students who are in need of tuition assistance, as determined confidentially by the Treasurer.
- **Rabbi's Discretionary Fund:** a fund for assistance to families in need, scholarship assistance, interfaith council, Holocaust museum and other endeavors at the Rabbi's discretion.
- **Youth Group Fund:** a fund that supports the ongoing engagement of post b'nai mitzvah youth, providing meaningful and fun experiences for our teens, and keeping them connected to their Jewish community.

*Unless otherwise noted by you, your gift will be acknowledged in the Kibbitzer the month following its receipt.
If your donation is incorrectly listed or omitted, please notify the temple office immediately.*

If you wish to designate a gift to a particular purpose, for example, Food Bank, Choir, Oneg, Social Action, etc., you may do so by noting as such on your payment method or with an accompanying note; otherwise, your gift will be used where it is needed most.

Opportunities:

- **Adopt-A-Book:** A dedication label will be placed in one of our prayer books, to commemorate a simcha or in honor or memory of a loved one for just \$54.
- **Bricklets:** For as little as \$9 you can send a Bricklet Card instead of buying a card for birthdays, condolences, etc. A Bricklet Card in your name will be sent to the person you wish stating that a donation has been made in his or her name to Beth Shalom to honor the occasion.
- **Tree of Life:** The Tree of Life is on the back wall of our Sanctuary. An engraved leaf or stone can commemorate many simchas, b'nai mitzvah, wedding, birth, graduations, etc. Leaves are \$180, and stones are \$1800.
- **Yahrzeit Plaque:** To honor the death of a loved one, you may purchase a plaque that will be cared for in perpetuity for \$250. The name of the deceased along with their date of death is included on the plaque.

Donations listed below were received between November 16 and December 15.

RABBI'S DISCRETIONARY FUND

In Appreciation

Joan Frankel
Rabbi Michael Torop
Steve & Sheila Slavkin

In Loving Memory of Frank & Sandy Kurtz

Pam & Joseph Provenzano

GENERAL FUND

In Honor of our Granddaughters Reagan, Dahlia, Monroe & Hannah

Julia & Tod Howard

In Honor of our new Grandchild, Amelia Mae

Sandy & Lee Schwartz

In Loving Memory of Lawrence Bernstein

Steve & Sheila Slavkin

In Loving Memory of Evelyn Sanders

Steve & Sheila Slavkin

In Loving Memory of Aline Brandewein

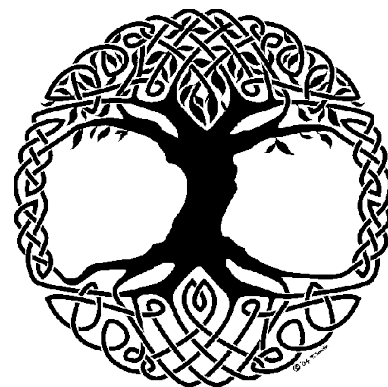
Anita Clifford

In Loving Memory of Annette Feldman

Anna & Steve Feldman

In Loving Memory of Diane Hoback's mother, Grace

Jeffrey & Janice Frieman





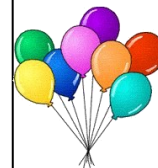
Anniversaries

1/5	Sandy & Lee	Schwartz
1/22	Randy & Jackie	Sehres
1/25	Murray & Jerilyn	Dimant
1/31	Jon & Isabel	Ellis

Yahrzeits



1/1	Charles Arnold	Hoffman	Husband	of	Anita	Hoffman
1/3	Gene	VanDevender	Father	of	Hank	Mart
1/5	Gloria	Bolnick	Mother	of	Jay	Bolnick
1/6	Rose	Frye	Grandmother	of	Kevin	Frye z"l
1/6	Ann	Edelson	Grandmother	of	Joel	Edelson
1/9	Harvey	Jacobson	Brother	of	Peter	Jacobson
1/9	Florence	Plesur	Mother	of	Joe	Plesur
1/9	Morton	Rabinowitz	Father	of	Mark	Rabinowitz
1/10	Gus	Braunstein	Grandfather	of	Hank	Mart
1/12	Aline	Brandwein	Mother	of	Anita	Clifford
1/12	Schura	Dimant	Mother	of	Murray	Dimant
1/12	Pat	Bricklin	Cousin - female	of	Steve	Feldman
1/12	Rebecca	Wolfe	Grandmother	of	Natasha	Rieger
1/12	Lillian	Shames	Aunt	of	Sheila	Slavkin
1/14	Dorothy	Saxe	Relative	of	Leslie	Will
1/14	Craig Morris	Neuman	Husband	of	Collette	Neuman
1/15	Harold	Ohman	Uncle	of	Cynthia	Goldstein
1/16	Myna	Kalbas	Mother	of	Bill	Kalbas
1/17	Anna	Pearlstein	Grandmother	of	Kevin	Frye z"l
1/17	Charles	Dannemann	Grandfather	of	Richard	Bauman
1/18	David	Greene	Grandfather	of	Gayle	Borgen
1/18	Tatyana	Gudz	Grandmother	of	Lana	Goldfarb
1/18	David	Sanders	Stepfather	of	Sheila	Slavkin
1/19	Alyssa Madison	Schwab-Powell	Daughter	of	Paulette	Schwab-Powell
1/20	Seth	Weiner	Friend	of	Errol	Fishman
1/21	Margot	Boraks	Mother	of	Renate	Greenfield
1/21	Marilyn	Stockelman	Mother-in-Law	of	Christine	Stockelman
1/21	Virginia	Finke	Mother	of	Mark	Finke
1/23	Sally	Bloom	Mother	of	Gail	Verlin
1/23	Lazar	Gold	Father	of	Marty	Gold
1/25	Louis	Verlin	Father	of	Michael	Verlin
1/26	Bob	Finkel	Cousin	of	Steve	Feldman
1/26	Aaron	Ferman	Grandfather	of	Joel	Edelson
1/27	Elayne	Raiskin	Mother	of	David	Raiskin
1/27	Robert	Northrop	Father	of	Rob	Northrop
1/27	Sharon	Milden	Mother	of	Marci	Glassman
1/27	Jack	Goldberg	Father	of	Michelle	Dempsey
1/29	Amada Amy	Ferman	Grandmother	of	Joel	Edelson
1/29	Frieda	Hershkowitz	Mother	of	Phyllis	Newman



Birthdays

1/1	Sophia	Savitt
1/2	Jason	Howard
1/2	Sarah	Meyers
1/4	Sharon	Aronson
1/5	Philip Harris	Smith
1/5	Natasha	Rieger
1/5	Richard	Oldman
1/8	Marci	Glassman
1/9	Bill	Noyes
1/9	Rachelle	Slater
1/10	Lauren	Shaw
1/10	Sarah	Smith
1/12	Stephen	Criden
1/12	Evan	Magdovitz
1/13	Cindi Helen	Clifford
1/15	Michael	McCormick
1/15	Karen	Blanchard
1/16	Steven	Birnholtz
1/17	Diane	Jacobson
1/18	Alex	Friedman
1/18	Andrew	Pelk
1/19	David	Rubin
1/19	Danita	Freedman
1/20	Gayle	Borgen
1/20	Adam	Weinstein
1/20	Christina	Frye
1/22	Larry	Leeds
1/23	Clara	Barnett
1/24	Stephen	Yavelow
1/24	Garrett	Borgen
1/24	Sarah	Leybovich
1/24	Caren	Katz
1/24	Steve	Nixon
1/25	Cynthia	Goldstein
1/25	Hannah	Torop
1/25	Mallory	Friedman
1/27	Aaron	Weinstein
1/30	Errol	Fishman

Simchat Shabbat!

Come celebrate your birthday or anniversary with us! A special Shabbat service is held every month to honor all our joys for that month. For this month it will be:

January 20

The dates listed for the Yahrzeits are adjusted yearly according to the Jewish Calendar and may not necessarily coincide with the common date of death. Names are read for Kaddish at the Shabbat before the actual date. If you would like to have the common date listed, please contact the temple office.

Want to advertise in *The Kibbitzer*?

Ad Size	Monthly Rate	10% Discounted (Annual only)
Bus. Card	\$20	\$216
1/4 page	\$40	\$432
1/2 page	\$50	\$540
Full page	\$75	\$810

Special rate for CBS Members — 10% off MONTHLY rate with six-month commitment. To reserve your place in the next issue, e-mail the temple office at cbs-admin@hotmail.com or call 681-6547.

Babysitters

Contact the temple office for a list of available babysitters. Contact information, qualifications and transportation details available for each sitter. We will not publish information about our younger members online due to privacy concerns.



ATTENTION! We send the Kibbitzer out online. This change has been made to help decrease one of our expenses at Beth Shalom.

However, if you prefer receiving your Kibbitzer via the US Mail, please call the Temple at (813) 681-6547 or e-mail the Temple (cbs-admin@hotmail.com) to tell us you **do not** want to get your Kibbitzer online. Please help Beth Shalom cut its expenses and



*Creating
Beautiful Smiles
Since 1979*

FAMILY, IMPLANT & COSMETIC DENTISTRY

**SANFORD N. SCHWARTZ,
D.D.S., P.A.**

813-684-7888

Email: doctor@implantandcosmeticdentistry.com

Web: www.drsandyschwartz.com

Our Philosophy:

To provide the very best dental care available while treating all patients as members of our own family.

Services Include:

Veneers, Lumineers
Zoom! Whitening
Implant Surgery &
Restoration
Crowns, Bridges &
Dentures
Root Canal Therapy
Preventive Care &
Maintenance
Invisalign Wireless Braces

*Oral & IV Sedation
Nitrous Oxide (gas)
Stereo Headphones
& Movies
Special Consideration for
Apprehensive Patients*

LAGO
Systems
NETWORK SOLUTIONS

We Make IT Happen.
Fast. Efficient. Secure.

Richard Oldman
www.lagosys.com • 813.600.5725

Thank You.

Now when you shop at smile.amazon.com, your purchases will support Congregation Beth Shalom Of Brandon Inc.
[Change your charity](#)



Next, make it easy to return to smile.amazon.com.
Install the AmazonSmile shortcut in your browser.

[Install now for Internet Explorer](#)

Share your support: [f](#) [t](#)

[Dismiss](#)



Congregation Beth Shalom is now participating in Amazon Smile — it's an easy way for CBS members, family and friends to support the temple. Simply use the following link: <http://smile.amazon.com/ch/59-3026396> and shop, shop, shop!

Brandon Foot Care Center
Larry A Kaler, DPM
Foot and Ankle Specialist

BrandonFoot.com

Lumsden Executive Park
669-A W Lumsden Rd
Brandon, FL 33511

Phone: (813) 654-3354
Fax: (813) 653-9177



Congregation Beth Shalom
of Brandon

January 2017

1 NO RS	2 New Year's Day Obs. 7:30P Choir Reh: 1/20	3 6:30P Fundraising 6:30P Lifelong Learning 7:30P Board Meeting	4 6:15P Hebrew School 6:30P Confirmation Class	5	6 7:45P Shabbat Svc	7
8 9:30A RS 9:45A Hebrew for Adults II 4:00P Art History Lecture	9 7:30P Choir Reh: 1/20	10	11 6:15P Hebrew School 6:30 BESTY—Chanukah Gift Exchange	12	13 Kibbitzer Deadline 7:45P Shabbat Svc/Choir Sings	14
15 NO RS—Internal Teacher In Service 12:00P BESTY Day	16 MLK Day 6:00P Page Turners 7:30P Choir Reh: 1/20	17 7:00PLife Learn Israel language	18 6:15P Hebrew School 6:30P Confirmation Class	19 7:30P Choir Reh: 1/20	20 7:45P Shabbat at the Ranch / Simcha Shabbat	21 10:00A Bible & Bagels
22 9:30A RS 9:45A Torah Tot's 9:45A Hebrew for Adults II 3:30 Israel thru Film	23	24	25 6:15P Hebrew School 6:30 BESTY 7:30P Ritual Committee	26	27 7:00P Shabbat Svc: Family	28 6:00P BESTY Spaghetti Dinner & Jewperdy
29 9:30A RS: 6th Gr Field Trip 3:00P int'l Holocaust remembrance Day @ The Italian Club 5:00P JCC President's Dinner @ Glazer JCC	30 7:30P Shab Al Reh: 2/17	31 7:30P Exec. Comm Mtg	Shaded days indicate office closure.		Calendar is subject to change. Please check with the Temple Office if you are planning an event or meeting. A live, online calendar is also available 24/7 at www.bethshalom-brandon.org	



706 Bryan Road - Brandon FL 33511

NONPROFIT
ORG
U.S. POSTAGE
PAID
PERMIT NO
6717

Address Service Requested

Inside Scoop

<i>Membership</i>	<i>5</i>
<i>Mazels & Kudos</i>	<i>5</i>
<i>Lifelong Learning</i>	<i>6</i>
<i>Religious School</i>	<i>7</i>
<i>Kolot Shalom</i>	<i>10</i>
<i>Calendar</i>	<i>15</i>

Welcome the Stranger...
Stranger No More.



JOIN OUR WEIGHT LOSS PROGRAM

Monthly group rate day \$100 (reg. \$185) start-up fee
Call us for this month date!

Laser Hair Removal • Laser Vein Removal
Age Spot Removal • Laser Skin Rejuvenation
Botox • Chemical Peels
Skin Care Products • Microdermabrasion

Peter A. Jacobson, M.D.
500 Vonderburg Drive, Ste 302E
Brandon FL 33511
(813) 654-8193 or (813) 681-5702
arcofbrandon.com
e-mail - arcofbrandon@verizon.net

**We are owned and operated by physicians
who care about you.**

There is no better investment than yourself!
Look younger, Feel younger, and Live younger!