

The Kibbitzer

Congregation Beth Shalom

706 Bryan Road Brandon, FL 33511
Phone (813) 681-6547, Fax (813) 681-7517
www.BethShalom-Brandon.org

February 2016
Volume 26, Issue 9

Rabbi

Betsy Torop 541-3751

Administrative Director

Mags Oldman 681-6547

Cantorial Soloist

Sandy Santucci 681-6547

Religious School Coordinator

Amy Weinstein 685-7064

Executive Board of Directors:

President

Jeff Newman 758-4120

1st VP

Gerry Pliner 436-0080

2nd VP

Errol Fishman 657-7733

3rd VP

Toby Koch 654-0877

Treasurer

Michael Barnett 545-6800

Secretary

Dan Weinstein 685-7064

Past President

Hank Mart 486-3709

Members at Large

Gayle Borgen 625-0073

Lauren Weisman 352-4574

Michelle Dempsey 310-2198

Seth Dugan 400-3609

Scott Hopkins 245-5573

Stephen Criden 653-3186



From the Rabbi

Who Are We?

In 2013 an article appeared in Time Magazine entitled, “Why Facebook Makes You Feel Bad About Yourself.” The article discusses a survey of 600 Facebook users, reporting that 1 in 3 individuals felt *worse about themselves* after visiting the site. Why? Because on FB – as in Lake Wobegon – “All the women are strong, all the men are good looking and all the children above average.” Looking at Facebook apparently makes us feel as if we don’t live up to others. There is nothing wrong with sharing our joys, our beautiful vacation photos, our *simchas*.

And I am most certainly *not* advocating sharing the deeply personal, intimate, private details of our life in an online forum. But I worry that the ‘FB phenomenon’ – the need to present a better-than-perfect façade – seeps into our personal encounters. We are afraid to share our real selves. And who are we? We are people who experience joy and challenge. We are also individuals who confront job loss and illness. We have family members who are incarcerated or addicted. We struggle with mental illness and intellectual disability, with physical limitations and financial concerns. When we hide these realities behind a perfectly arranged mask, those shared struggles are masked as well. It is easy to feel as if we are alone, the only ones in the synagogue facing a particular challenge, when in fact, this is rarely the case. Finding a way to bridge this gap is an important step to helping turn a group of people into a *kehillah kedoshah* – a holy community.

Where Did We Come From?

At our UT25 celebration last May, we had everyone identify where they were born on a big map. It was amazing how many different roads we traveled to get to Congregation Beth Shalom. And if we want to go back even farther, our roots would go out wider still. That is exactly what we’ll be doing over the next few months. In March, we’ll hear from a few members of the congregation exploring how they have uncovered their family histories – the documents, artifacts and stories they have discovered. On March 20, a session of Jewish genealogy will help give us some guidance and direction about researching our personal family trees. And at Shabbat services on February 12 we will discuss Chaim Potok’s *The Chosen*, set in the 1940’s. Take the opportunity to read (or re-read) this wonderful book prior to the service. The story of a changing Jewish world, the clash of Jewish ideas, of old and new, is our history too. Years ago, the Jewish musician Doug Cotler wrote a song entitled “I’m standing on the shoulders of the ones who came before me.” How true that is.

I will be on Sabbatical for the months of February and March. I am looking forward to studying, reading and spending some time in Israel. It will be wonderful to share these experiences with you when I return.



Get ready to ease on down the road on **March 23rd!** CBS will be presenting a Purim Spiel that is not to be missed! Mark your calendars now!

From the President - Jeff Newman

The Tree

Coming up this month is Tu Bishvat—a celebration of the tree—one of the most underappreciated things in nature.

Your average tree has been around much longer than you. In fact, many live over 100 years. They never really move. They don't talk, they don't do much of anything but they survive. In fact, not only do they survive they thrive.

Our congregation can learn a lot from the tree. The first thing we all know is that you need a solid foundation—a good root system. The more roots, the deeper the roots, the more a tree can withstand stormy weather. The more families we attract, the longer a family stays with us; and the more connections they make, the more we can withstand our own stormy weather.

But roots are only good if you can get the proper nutrients from the ground. If the tree settles in an area that is fertile and rich in minerals, that tree will thrive. So it is the same with our congregation – we need each individual's talents to thrive. Those talents are the nutrients we need to have a vibrant congregation.

A tree needs a good system to disperse those nutrients to where it's needed. The tree needs to coordinate and dispense those precious nutrients where they are needed. It is the same with the our congregation. We need good communication and solid leadership to make sure that our precious nutrients are distributed to the areas of need with in our congregation and to our greater community.

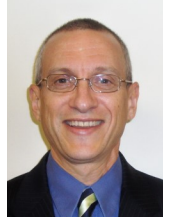
A tree needs a healthy bark system to make sure that it stays stable for many years. Our congregation needs that same stability. We need our bark, our building, to be maintained throughout the coming years. That takes proper finance and tender loving care from our congregants.

The tree also produces its own sweetness, the sap. After all, what is life without a little sweetness? What is a congregation without its daily joys?

The tree aspires to grow higher and higher. It aspires to be something bigger than it already is and to expand. Through its growth the tree helps out many other members of the community. Through branches birds can rest, animals may refresh themselves under shade and the conversion of carbon dioxide to oxygen enables living creatures to breathe. The tree truly is an important part of its ecosystem, as are we.

Probably the most interesting aspect of the tree is its leaves. Leaves are always extended and are unfurled. Those leaves take the proper energy from above and use it to ensure its own viability. The tree accepts this energy and love and revitalizes itself constantly.

Energy and revitalization from above.....hmmm.



Congregation Beth Shalom

**Welcome the Stranger...
Stranger No More.**



Your 100% Satisfaction is Absolutely Guaranteed !

Clarke Automotive Systems

If you have a problem with your car, let us give you our honest, expert & straightforward advice so the job is done right—the first time !

Bob Clarke
(813) 685-2939

131 Central Ave
Brandon, FL 33510

Congregation Beth Shalom provides a meaningful spiritual home for people of all ages and levels of knowledge, a place to learn and to question, a place to worship and to celebrate, and a place to find a community that cares. We offer:

- ✧ **Friday worship services at 7:45 PM**
- ✧ **Religious school pre-kindergarten through tenth grade**
- ✧ **Complete B'nai Mitzvah preparation**
- ✧ **Youth group programming**
- ✧ **Adult Education classes**
- ✧ **Community-wide events, including Mitzvah Day**



February Dates to Remember

- **Friday, February 12, 7:45PM—Shabbat Service / Community Book Discussion.** Service will be led by our Lifelong Learning Committee. Discussion of the book, "the Chosen" by Chaim Potok.
- **Friday, February 19, 7:00PM—Family Shabbat Service.** Service will be lead by our religious school students.
- **Saturday, February 20—BESTY Bowling** time TBA
- **Sunday, February 21, 9:45AM—Torah Tots**
- **Friday, February 26, 7:45PM—Shabbat Alive!** Shabbat services led by the band!

Religious Education Calendar, page 7;
Full calendar, page 15

~ SAVE THE DATE ~

The CBS Annual Retreat - April 16

Contact Sheila and Steve Slavkin with questions.
Registration information coming soon!

February Oneg Schedule

There can be no joy without food and drink. — Talmud, Mo'ed Katan



THANK YOU! to the following people who will host an Oneg Shabbat in February.

February 5: Janice Perelman as a Temple Mitzvah.

February 12: No host available at this time.

February 19: The parents of the Religious School for the Family Shabbat Service.

February 26: Anna Feldman in honor of her birthday.

SIGN UP TO SPONSOR AN ONEG!

Contact Judith Pliner at (813) 436-0080 or email her at gp@pliner-inc.com if you are interested in hosting an Oneg. Thanks to everyone who is helping out with the Onegs in February and in the upcoming months.

Your Oneg Committee,
Anna Feldman, Judith Pliner, Anita Hoffman
and Melissa Villasin



PURIM SPIEL 2016

Join us March 23rd at 7:00PM, as we share the story of Esther in a contemporary way! Bring your pasta box graggers to donate to the food bank! BESTY will be selling candy graggers too!




BLOOMINGDALE PIZZA
"BLOOMINGDALE'S NEIGHBORHOOD PIZZERIA"

684-7466

4334 Bell Shoals Rd.
Valrico, FL 33594
Sun.-Thurs. 11-10:00
Fri.-Sat. 11-11:00
Delivery available until
30 min. before close.



Marriage, Family, &
Individual Counseling

☎

Adolescents 13 Yrs Old to Adults

☎

Evening & Weekend Hours

☎

Most Major Insurance
Accepted

813-681-7441
108 Mason St., Brandon, FL

The Kibbitzer

Volume 26, Issue 9
Published Monthly by
Congregation Beth Shalom
706 Bryan Road
Brandon, FL 33511
Phone 813-681-6547
Fax 813-681-7517
Email: cbs-admin@hotmail.com

Email and articles for publication:
Kibbitzer706@verizon.net

For current news and events
see the congregation's web site:
<http://www.bethshalom-brandon.org>

Mags Oldman, Administrative Director
813-681-6547 • cbs-admin@hotmail.com

Office hours:

subject to change without notice
Mon & Fri 10 a.m.- 2 p.m.
Tue & Thurs Noon-4 p.m.
Wed 1 p.m. - 5 p.m.

Weekly Email Blast submissions

bethshalominfo@gmail.com
eBlast deadline is Wednesday at 6:00pm

Kudos n' Mazels

Join with CBS in offering congratulations and recognition to the following members on their accomplishments:

MAZELS

- Mazel Tov to Peter & Diane Jacobson on the marriage of their daughter, Erica to Brad Reilly!

KUDOS

- Kudos to **Andrea Chassen**, for stepping into the role as Publicity Chair!
- Kudos to **Mags Oldman** (with her volunteer hat on!) for chaperoning our middle school students to Hatikvah Kallah for the weekend!

Do you know a CBS member who should be congratulated for a special accomplishment? If so, email the name and accomplishment to cbs-admin@hotmail.com.



KOLOT SHALOM NOTES



February 26th

Join us for a great evening of diverse musical styles. Those wishing to participate either as a singer or instrumentalist should contact Joan Frankel or Kevin Frye.

Shalom
Joan E. Frankel

Saturday Night at the Movies

February 6 at 7:30PM



Free movie, free snacks and an opportunity to smooze. The movie being viewed is "**Regina**." It is the true story of Regina Jonas, the world's first woman Rabbi who lived in Berlin in the 1930s.

Lifelong Learning Committee Book Discussion

Chaim Potok's "**The Chosen**"

Friday, February 12 at 7:45p.m.

Join us for a discussion of a novel that follows the narrator Reuven Malter and his friend Daniel Saunders, as they grow up in the Williamsburg neighborhood in Brooklyn, New York. The story takes place over a period of six years, beginning in 1944 when the protagonists were fifteen years old. It is set against the backdrop of the historical events of the time: the death of President Roosevelt, the end of World War II, the revelation of the Holocaust in Europe, and the struggle for the creation of the state of Israel.

Committees/Chairpersons

Building/Capital Fund

Peter Jacobson

Building & Grounds

Seth Dugan*

Caring

Christine Stockelman

Finance

Jon Ellis*

Fundraising

Open*

Lifelong Learning

Adult—Sheila Fishman*

Long-Range Planning

Open*

Membership

Phyllis Newman*

Oneg

Anna Feldman, Anita Hoffman,
Judith Pliner

Publicity

Andrea Chassen

Ritual

Cynthia Goldstein*

Social Action

Marla Smith

Youth Education

Michelle McCormick*

Youth Group

Advisor—Mags Oldman*

President—Justin Shaw

* Ex-officio voting Board member

OTHER PROGRAMS

CBS Players

Anna Brubaker, Joel Edelson

CBS Singles Over 50

Anita Clifford

Chavurah

Phyllis Newman

Dinner with the Tribe

Judy Jacobson

Email Blast

Mags Oldman

Going Green

Jim & Sandee Pelk

Kibbitzer/Bulletin Editor

Suzanne Jones

Kolot Shalom Choir

Joan Frankel

Library

Anita Hoffman

Page Turners

TBD

Web Administrator

Mags Oldman

Yarn Mavens

Phyllis Newman



ART AFTER DARK

"An evening of Art & Auctions"

Proceeds to Benefit Congregation Beth Shalom & Special Olympics, FL
501(c)(3) Not-For-Profit Certificate #85-8012627293C-1



**Special
Olympics
Florida**



Healthy Community

Sponsored by

Congregation Beth Shalom in Partnership with Special Olympics Florida, Healthy Community – Tampa Bay

Please join us on

Saturday Evening, February 27, 2016

At

Congregation Beth Shalom

**706 Bryan Road
Brandon, FL**

Preview: 7:00 p.m. Auction: 8:00 p.m.

Admission: \$18.00 per person

Door Prize ~ Silent & Live Auction

Hors D'oeuvres ~ Cash Bar

For more information call: Mags Oldman 813-681-6547

Major Credit Cards Accepted

Featuring Art in All Media & Price Ranges

Coordinated for your pleasure by:

Marlin Art Inc., 920 Grand Blvd., Deer Park, NY 11729 (63) 242-3344

Art selections may include:

AGAM
CHAGALL
HAENRAETS
NEIMAN
SHVAIKO
ZULE

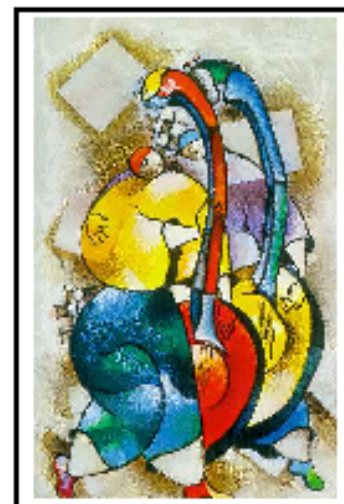
ALVAR
DELACROIX
KUN
PATCHELL-OLSON
TARKAY
SPORTS MEMORABILIA

BORELLI
FAZZINO
LENA LIU
ROCKWELL
WISSOTZKY

BOULANGER
GHAMBERO
ROBERT LUI
ROTHENBERG
WOOSTER-SCOTT
AND MANY MORE!

BRODINSKY
GORMAN
MOSES
SCHLUSS
WYETH

Make sure to respond to the special eblast survey about what kind of art you are interested in! It won't take long...just about 5 minutes of your time! It will help us make sure we've got what your looking for on hand! Thank you in advance!



CBS LIBRARY UPDATE

The library is in need of more bookends. Should you donate them or some books, please notify Mags or me so we may thank you in the Kibbitzer.

Anita Hoffman,
Congregation Beth Shalom Librarian

PLANNING

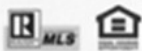
As responsible adults, we save. We save for a down payment on a house or car, maybe a boat. We save for retirement and our children's education. We may have a will and a living trust. We plan to lead a good life. Part of that planning is burial. It is unfair to our loved ones not to plan for that. CBS is a full service synagogue. Currently we do not have a way for our members and their families to plan for burial. A committee has been working on changing that. In the March Kibbitzer, Rabbi Torop will devote her article to that topic and what the committee has been doing. Look for her article on the first page of the March Kibbitzer.



ILENE R. SCHWARTZ
Realtor®
(813) 625-2942

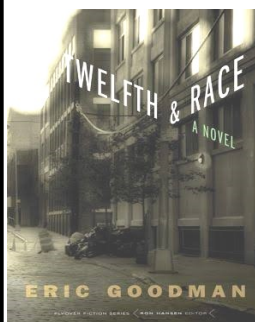
ileneRschwartz@gmail.com
Fax: (813) 655-1057
www.realtorilene.com
1116 Nikki View Drive, Brandon, FL 33511

HomeExpress



Each Office is Independently Owned And Operated

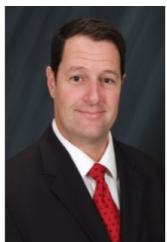
Page Turners presents...



On Monday, March 14 Page Turners will discuss the book, "Twelfth and Race" by Eric Goodman, and Sheila Fishman will facilitate the discussion. The Hillsborough County Library System does not have this book; however, several of our members do which should be sufficient time to pass it around prior to our meeting.

Retirement is a journey. Not a destination.

A sound financial plan starts with knowing what you are planning for. Call me today to discuss your retirement dreams and how you may be able to achieve them.



3447 Brook Crossing Dr.
Brandon, FL 33511

Hank Mart, ChFC®, CASL®

Financial Advisor

813-486-3709

Hank.Mart@investmentcenters.com

Securities, advisory services and insurance products are offered through Investment Centers of America, Inc. (ICA), and member FINRA/SIPC and a Registered Investment Advisor, and affiliated insurance agencies. ICA and Focus Wealth Strategies, LLC are separate companies.



Touching Base with TJCCF

Tampa Bay Jewish Film Festival March 2-9, 2016

Opening night is Wednesday, March 2, 2016, at the Straz Center for the Performing Arts. The multi-award winning film "REMEMBER" will be shown.

The TBJFF 20th year is a celebration of the finest international films that focus on Jewish themes and is one of the most inclusive and pluralistic Jewish events in the greater Tampa Bay area. The festival delivers an extraordinary collection of gripping dramas, thought-provoking documentaries, eclectic shorts and off-beat comedies depicting Jewish life from different times and places and appealing to everyone from the most discerning film critics to family audiences. The Tampa Bay Jewish Film Festival is produced by the Tampa Jewish Community Center & Federation and the Jewish Federation of Pinellas & Pasco Counties. Tickets for movies are now on sale.

Please visit www.tbjff.org for more information. For questions, please contact Brandy Gold or via phone at 813.769.4725.



Education - Amy Weinstein

The aim of education should be to teach us rather how to think, than what to think - rather to improve our minds, so as to enable us to think for ourselves, than to load the memory with thoughts of other men.-Bill Beattie

We returned from winter break and have been busy ever since! After several weeks of vacation, we began the new year with a Family Shabbat Service. Our students assisted the Rabbi beautifully. Their participation added yet another simcha to Simcha Shabbat! Thanks to the fifth grade parents for hosting our themed oneg. I think everyone- young and not as young- enjoyed the sundae bar Oneg.

Our next Family Shabbat Service will be held this month on Feb. 19. The Oneg will be a "Red, White and Blue Oneg" in recognition of President's Day.

The Rabbi had family programs last month for both 7th and 5th graders. Our 6th graders joined 100 other Jewish 6th graders for a day of learning at Tampa's Hillel Academy. They visited stations centered on ecological conservation with a Jewish emphasis. The day was called Jewology and was enjoyed by all.

We have Religious school for the next six weeks without interruption. I challenge you to make it to each class. We will have something special for all students who attend each Sunday (9:30 a.m.-noon) through Spring Break. These students will be recognized during our Purim celebration! I'll be here, will you?

Parent Association meets regularly. We have about a dozen parents attend. Please contact Michelle McCormick to get involved!

Please don't hesitate to contact me if you have any questions, concerns or comments regarding your child's religious education at Congregation Beth Shalom.

Amy Weinstein- awine007@msn.com (813)685-7064

Bar/Bat Mitzvah Listings

- If you would like to have information on your child's upcoming Bar or Bat Mitzvah listed in *The Kibbitzer*, please submit an article and picture (digital if possible) to kibbitzer706@verizon.net by the second Friday of the month prior to your service.

B'nai Mitzvah Tutoring

Contact Keren Vergon at
813-785-6324 or kvergon@verizon.net.



Important February Dates



2/3	Hebrew & Confirmation
2/7	Religious School
2/10	Hebrew
2/14	Religious School & Parent Association meeting
2/17	Hebrew & Confirmation
2/19	Family Shabbat 7:00
2/21	Religious School & Torah Tots
2/24	Hebrew
2/28	Religious School

BeSTY BEAT

February 20th—BESTY Bowling

Spring Kallah (grades 9 - 12)

March 4-6, Camp Geneva in Fruitland, FL

Have you considered a leadership position? Elections for next year's officers will be held early March!

LLTI (elected officers)

April 8 - 10, 2016 Temple B'nai Israel - Clearwater, FL)



Doogie Entertainment

DJ and Party Services

Weddings
Bar/Bat Mitzvahs
Children's parties
80's & 90's video parties
Office Parties
PA system rental/set-up



Phone: 813-400-3609
www.DoogieEntertainment.com
E-mail: Doogie@DoogieEntertainment.com

Pleased to offer a 10% discount on services to members of Congregation Beth Shalom

kids R kids
QUALITY LEARNING CENTERS

Ages 6 weeks to 5 years old

Before & After school up to 12 years old

Pick up at local schools

4321 Lynx Paw Trail
Valrico, FL 33594

Office: (813) 657-6200
email: flkrk@aol.com



Find CBS on Facebook!

Search: *Congregation Beth Shalom of Brandon*



Lifelong Learning—Sheila Fishman

The Lifelong Learning Committee has some exciting programs scheduled for February.

The Committee will be presenting a **Night at the Movies** on **Saturday, February 6 at 7:30 p.m.** with a free movie, free snacks, and an opportunity to smooze. The movie being viewed is "**Regina.**" It is the true story of Regina Jonas, the world's first woman Rabbi who lived in Berlin. In the 1930s, her greatest dream was to become a Rabbi. She felt that she was born to be a Rabbi, but women were barred from becoming a Rabbi according to the Jewish laws. You will be deeply impressed by her short life story, which was full of struggles. Rachel Weisz as the inspiring figure Regina, makes this story complete. The use of archive and experimental editing techniques add a magical layer which will pull you, the audience, into this unique story.

Have you ever read a book that has had a major impact on your thought processes. The Lifelong Learning Committee will be revisiting such a classic. Join the Committee in its presentation and discussion of Chaim Potok's "**The Chosen**" on **Friday, February 12 at 7:45p.m.** The novel was first published in 1967 and released as a movie in 1981. Interestingly, it was also a short-lived off-Broadway musical, presented briefly in 1988. The novel follows the narrator Reuven Malter and his

friend Daniel Saunders, as they grow up in the Williamsburg neighborhood in Brooklyn, New York. The story takes place over a period of six years, beginning in 1944 when the protagonists are fifteen years old. It is set against the backdrop of the historical events of the time: the death of President Roosevelt, the end of World War II, the revelation of the Holocaust in Europe, and the struggle for the creation of the state of Israel. Literary themes within the book include the pursuit of truth in a gray world, the strength of friendship, and the importance of father-son bonds. Another important theme is the contrast of tradition to modernity.

For March, the Lifelong Learning Committee offers the following events:

Page Turners will be meeting on **Monday, March 14 at 6 p.m.** to discuss Eric Goodman's novel: *Twelfth and Race*. Eric Goodman is a novelist, rock lyricist, travel writer, journalist, and former television writer. He is also Professor of English and former director of the creative writing program at Miami University in Oxford, Ohio. Goodman's fifth novel, *Twelfth and Race*, is a story of love, race and history set against a backdrop of racial problems in the fictional Midwest metropolis of Calhoun City, Missouri. *Twelfth and Race* was

(Continued on page 9)

We CREATE you CELEBRATE! Embassy Suites Tampa-Brandon

✧ Bar & Bat Mitzvahs ✦ Retirement Parties ✧ Birthday Parties



10220 Palm River Rd.
Tampa, FL 33619
813-413-3905

Women's Health & Wellness

INDIVIDUALIZED OB/GYN CARE

- Weight-loss program
- In Office Essure Sterilization
- In Office Endometrial Ablation
- Botox/Dermal Fillers/Facial Peels
- 3-D Ultrasound
- Outpatient DaVinci hysterectomy

Stephen Zweibach, M.D.
Natasha Champion, M.D.
Mariel Rotundo-Patino, D.O.

Call 813-571-2777

today to make an
appointment and start your
wellness journey

2 locations to better serve you

815 S. Parsons Ave, Brandon, FL
13148 Vail Ridge Dr, Riverview, FL

Se habla espanol

www.whnw.net

Peter A. Jacobson, M.D.

*Internal Medicine &
Cardiovascular
Disease*

500 Vonderburg Dr. E 303

Brandon, FL 33511

(813) 681-5702

(Continued from page 8)

published on March 1, 2012 by the University of Nebraska Press, as part of the prestigious literary series, Flyover Fiction. A light snack will be supplied by our moderator, Sheila Fishman.

During a weekend in March, we will be visiting **Jewish Genealogy**. More specifically, on **Friday, March 18, 2016 at 7:45 p.m.**, the Committee will be presenting a panel discussion relating to the family history of three congregants, the immigration trail of those congregants and how they reconstructed their family history. I know it will be an enlightening presentation.

Then, on **Sunday, March 20 at 4 p.m.**, the committee will be hosting **Bill Israel**. His presentation will be a basic introduction to Jewish Genealogy. The program will provide an overview of what genealogy is all about and how Jewish genealogy is different and presents unique challenges in family history research. Jewish immigration to America will be reviewed from colonial times to the present. Some widely held myths about Jewish Genealogy will be dispelled. Easy to use tools, techniques, and resources for research will be identified and demonstrated. Examples of a variety of current and historical genealogical documents will be provided. The program will be followed by **Dinner with the Tribe** at China Chen.



*Dinner with
The Tribe*

February 29th

March 8th

March 20th



**FANTASY
FOOTBALL**

Congratulations to **Virginia Barnett** for winning
SUPER BOWL DALET!



Congrats also goes out to Larry Kaler who had the most total points for the year. Both players will be receiving prizes. Thanks to all the people who participated! These members had fun while financially helping our temple



Third Annual Retreat Schedule of Events The (Reform) Jewish Force Awakens

Camp Cedarkirk

5776

April 16, 2016

9:00 a.m. to 8:00 p.m.

Spend a beautiful day with your congregational family! A day full of learning, laughing, singing, and adventure! Starting with an outdoor Shabbat service, get in touch with nature as we worship together in a chapel in the woods, with a blue sky above and lush greenery around us. Then we'll have indepth learning sessions for adults in a relaxed atmosphere, while children will have their own activities. Teens are welcome to participate in either kind of programming.

What retreat would be complete without time to do just that—and we'll have plenty of options to for you to choose from to spend your free time—from hanging out on the patio in some rocking chairs, to rocking a canoe down the Alafia River, conquer a rock climbing wall, or feel the wind in your face as you zipline through treetops. Breakfast, lunch AND dinner is included with registration, and we'll wind down the day with a campfire, Havdalah, songs, and s'mores. We'll be just a few miles from home in Lithia, FL at Camp Cedarkirk.

- ☆ Reservations are due no later than March 20, 2016 along with your payment.
- ☆ Registration forms are available in the synagogue lobby, the CBS website, or the synagogue administrative office.
- ☆ All meals are provided and are vegetarian.
- ☆ Children are encouraged to attend and special programming will be available for them.
- ☆ Children under 4 must be chaperoned by a responsible adult at all times.
- ☆ Limited scholarships and fee assistance are available. Contact Rabbi Torop.
- ☆ Meet new people, enjoy time away with family and friends.

Please contact **Sheila Slavkin (383-7494/323-0563)** for additional information.

Registration forms are available online or at the synagogue!



Our Second Night Seder for Passover will be **April 23rd**. Registration forms are available in the temple, online, and right here in this issue of the Kibbitzer!

Rabbi Torop will lead the seder along with Cantorial Soloist Sandy Santucci.

Enjoy a catered seder, from matzoh ball soup to coffee and kugel!

Seating is limited, so registration is a MUST and needed by April 8th.

\$36 per adult (aged 13 and older), \$18 for children (aged 5–12), and free for those under 5 (no food will be provided for those under 5).

SPECIAL EVENT DONATIONS

*Please Support the Professionals
and Retailers Who Support
CBS*



When it's time to pick a vendor or hire a professional for services, keep in mind these generous businesses that support CBS. Thank you to the following businesses and friends for their participation in Art After Dark.

FINANCIAL SPONSORS

Jon & Isabel Ellis
Family Implant & Cosmetic Dentistry – Dr. Sandy Schwartz
Anna & Stephen Feldman
Sheila & Errol Fishman
Lawrence Greenfield
Hillsboro Memorial Funeral Home
Peter & Diane Jacobson
Kids R Kids – Keith & Debra Balot
Milt & Phyllis Newman
Pathways Counseling Center – David & Rudina Richter
Jim & Sandee Pelk
Gerald & Judith Pliner
Shaughnessey Law, Monica A. Frost, Esq.
Team Imagine / Century 21 Beggins – Sarah Meyers & Molly Rizzi
The Tooth Caboose – Dr. Steve Slavkin
Women's Health & Wellness – Dr. Steve Zweibach

IN-KIND SPONSORS

Table Garnish / Rene Vojnovic
Doogie Entertainment / Seth Dugan
Focus Wealth Strategies / Hank Mart

Are You Supporting our Commercial Advertisers?

Since revenue from our commercial advertisers helps to defray the cost of printing and distributing *The Kibbitzer*, we urge all of our readers to patronize our commercial advertisers and, when you see them, to thank them. Without them, Congregation Beth Shalom of Brandon would not be able to publish *The Kibbitzer* in print and online.



UT25 Patrons

Carolyn, Eric, Jason & Danielle Miller
Julie & Marvin Shienbaum

UT25 Friends

Keith & Debra Balot
Michael & Virginia Barnett
Jon & Isabel Ellis
Errol & Sheila Fishman
Cynthia Goldstein
Kathryn Kepes
Hank & Donna Mart
The Newman Family
Gerald & Judith Pliner
Betsy & Michael Torop
Stephen Zweibach

UT25 Associates

ABISA - The Hernandez Family
Rosalie, Jason, Tahlia & Arielle Boxt
Brown & Bigelow – Jill Oppolo
Busy Bee Printing – Beth & Brad Wexler
Century 21, Realtor– Sarah Meyers
Donna at LeSalon Rouge – Donna Mart
Ed Balis & Associates
Focus Wealth Strategies – Hank Mart
Family Implant & Cosmetic Dentistry - Sandy & Lee Schwartz
Growing Crafty – Melissa Villasin
Pathways Counseling Center - David & Rudina Richter

UT25 Mazels

Gayle & Jeffrey Borgen
Michelle & Mark Dempsey
Anna & Steve Feldman
Joan Frankel
Dave & Carol Anne Friedman
Betsy Glickman
Cynthia Goldstein
Renate Greenfield
Anita Hoffman
The Lannak Family
Hank & Donna Mart
The McCormick Family
The Newman Families
The Oldman Family
Pam & Joseph Provenzano
Eunice Rifkin
Lauren, Jeff, Justin & Jordan Shaw
Julie & Marvin Shienbaum
Steve & Sheila Slavkin
The Torop Family
Amy & Dan Weinstein
Lauren Weisman
Clifford & Leslie Will

Donations

Congregation Beth Shalom accepts donations for many purposes, with a variety of opportunities for donors to support the good works of the Temple. You may contact the office either by phone or email to make a contribution, or head to our website to make a secure online payment through a PayPal account or by using a credit card.

Funds:

- **General Fund** (unrestricted): An unrestricted gift to the General Fund allows the temple to use those funds wherever they may be needed most. This fund incorporates contributions received from our High Holy Day Appeal, Yahrzeit donations, Bricklets, Adopt-A-Book, Tree of Life (unless otherwise indicated) and other non-restricted gifts.
- **Building Fund:** A fund to ensure the continuing physical growth of our spiritual home. Intended for capital improvements and major building repairs.
- **Endowment Fund:** Gifts to this fund are placed in an investment account and temporarily restricted or can be defined/restricted by the donor. This fund ensures the future of our temple.
- **Religious School Scholarship Fund:** These funds will be made available to Religious School students who are in need of tuition assistance, as determined confidentially by the Treasurer.
- **Rabbi's Discretionary Fund:** a fund for assistance to families in need, scholarship assistance, interfaith council, Holocaust museum and other endeavors at the Rabbi's discretion.

If you wish to designate a gift to a particular purpose, for example, Food Bank, Choir, Oneg, Social Action, etc., you may do so by noting as such on your payment method or with an accompanying note; otherwise, your gift will be used where it is needed most.

Opportunities:

- **Adopt-A-Book:** A dedication label will be placed in one of our prayer books, to commemorate a simcha or in honor or memory of a loved one for just \$54.
- **Bricklets:** For as little as \$9 you can send a Bricklet Card instead of buying a card for birthdays, condolences, etc. A Bricklet Card in your name will be sent to the person you wish stating that a donation has been made in his or her name to Beth Shalom to honor the occasion.
- **Tree of Life:** The Tree of Life is on the back wall of our Sanctuary. An engraved leaf or stone can commemorate many simchas, b'nai mitzvah, wedding, birth, graduations, etc. Leaves are \$180, and stones are \$1800.
- **Yahrzeit Plaque:** To honor the death of a loved one, you may purchase a plaque that will be cared for in perpetuity for \$250. The name of the deceased along with their date of death is included on the plaque.

*Unless otherwise noted by you, your gift will be acknowledged in the Kibbitzer the month following its receipt.
If your donation is incorrectly listed or omitted, please notify the temple office immediately.*

Donations listed below were received between December 16 and January 15.

ENDOWMENT FUND

In Honor of Milt Newman's Birthday

Murray & Jerilyn Dimant

RABBI'S DISCRETIONARY FUND

In Honor of Milt Newman's Birthday

Anita Hoffman

Ruth Goldberg

In Appreciation...

JR Danon

In Loving Memory of Schura Dimant

Murray & Jerilyn Dimant

In Loving Memory of Florence Plesur

Joseph & Carole Plesur



GENERAL FUND

In Appreciation...

Ron Funk

In Honor of Benjamin Lannak's Bar Mitzvah

The Levine & Lannak Families

In Honor of Milt Newman's Birthday

Stephen & Anna Feldman

Errol & Sheila Fishman

Anita Hoffman

Gerald & Judith Pliner

In Loving Memory of Aline Brandeweine

Anita Clifford

In Loving Memory of Margot Boraks

Renate Greenfield

In Loving Memory of Frank Kurtz

Joseph & Pam Provenzano

In Loving Memory of Jay Musikar

Errol & Sheila Fishman

Gerald & Judith Pliner

Steve & Sheila Slavkin

Michael & Gail Verlin

In Loving Memory of Seymour Ponemon

Arthur Ponemon

In Loving Memory of David Sanders

Steve & Sheila Slavkin

In Loving Memory of Lillian Shames

Steve & Sheila Slavkin



Anniversaries

2/4 Lauren & Jeffrey Shaw
2/10 Rachel & David Moskowitz

2/13 Joel & Laurie Edelson
2/23 Paulette & Norman Powell

Yahrzeits



2/1	Nathan	Weisberg	Father	of Barbara	Kinney
2/3	Kathy	Bensanceney	Niece	of Laurie	Edelson
2/5	Maurice	Goldman	Father	of Sharon	Aronson
2/5	Judy	Fishman	Mother	of Errol	Fishman
2/6	Leon	Pliner	Father	of Gerald	Pliner
2/9	Daniel	Workman	Nephew	of Anna	Feldman
2/10	Florence	Cohen	Mother	of Blossom	Grimm Silverstein
2/11	Joan	Ratner	Sister	of Ira	Ratner
2/12	Dr. Dorothy	Strauss	Mother	of J E	MacNaughton
2/13	Rose	Sandberg	Mother	of Sandy	Santucci
2/13	Albert	Jacobson	Father	of Peter	Jacobson
2/14	Reuben	Armus	Father	of Sheila	Fishman
2/16	Joe	Scheiner	Father	of Susan	Ruiz
2/19	Violet	Leopold	Grandmother	of Tami	Hahn
2/20	Deborah	Brill	Mother	of Scott	Savitt
2/20	Herbert	Sapolsky	father	of Susan	Burkett
2/20	Esther	Lieberman	Grandmother	of Rudina	Richter
2/20	Anna	Fleischman	Grandmother	of Lauren	Weisman
2/22	Frederick	Frankel	Husband	of Joan	Frankel
2/22	Molly	Honig	Mother	of Rudina	Richter
2/24	Leo	Bond	Grandfather	of Joanne	Ronay
2/25	Lena	Kaplan	mother	of Janice	Perelman
2/25	Terry	Magdovitz	Husband	of Caren	Magdovitz
2/26	Sylvia	Levine	mother of	of Marcia	Weiner
2/26	Harry	Saxe	Relative	of Leslie	Will
2/26	Marjorie	Will	Relative	of Leslie	Will
2/26	Sharon	Ellis	Mother	of Jonathan	Ellis
2/26	Louis	Glickman	Father	of Betsy	Glickman
2/28	Lois	Criden	Mother	of Stephen	Criden
2/29	Morton	Epstein	Father	of Fred	Epstein



Birthdays

2/2	Larry	Kaler
2/2	Francine	Garcia
2/3	Lauri Beth	Plesur-Zuchlewski
2/3	Sheila	Fishman
2/3	Justine	Lamattina
2/3	Robert	Karr
2/4	Paulette	Schwab-Powell
2/4	Lawrence	Greenfield
2/5	Hayley	Finke
2/6	Michael	Davis
2/7	Michael	Freedman
2/8	Benjamin	Rieger
2/10	Allison	Rapp
2/11	Jerry	Holschauer
2/12	Noah	McCormick
2/13	Zachary	Meyers
2/14	Lauren	Miller
2/15	Micah	Murray
2/16	Julia	Dempsey
2/17	Owen	Smith
2/21	Carly	Noyes
2/23	Amy	Tabak
2/23	Bruce	Sperry
2/25	Joseph Stone	Swedlow
2/25	Jason	Finke
2/27	Hannah	Weisman
2/28	Cynthia	Posner
2/28	Glennie	Andrews
2/28	Susan	Schwartz
2/28	Joseph	Plesur

The dates listed for the Yahrzeits are adjusted yearly according to the Jewish Calendar and may not necessarily coincide with the actual date of death. Names are read for Kaddish at the Shabbat before the actual date. If you would like to have the actual date listed, please contact the temple office.

Want to advertise in *The Kibbitzer*?

Ad Size	Monthly Rate	10% Discounted (Annual only)
Bus. Card	\$20	\$216
1/8 page	\$30	\$324
1/4 page	\$40	\$432
1/2 page	\$50	\$540
Full page	\$75	\$810

Special rate for CBS Members — 10% off MONTHLY rate with six-month commitment. To reserve your place in the next issue, e-mail the temple office at cbs-admin@hotmail.com or call 681-6547.

Babysitters

A list of available sitters is withheld from our online version of the Kibbitzer due to privacy concerns. Please feel free to contact the Temple Office at 681-6547 or cbs-admin@hotmail.com for that information.

The Babysitter list is open to CBS members and their children. Do you want to be added to the list, or do you have a special accomplishment you would like us to acknowledge? Please e-mail Kibbitzer706@verizon.net with the information, and we will be glad to add you to the list.



*Creating
Beautiful Smiles
Since 1979*

FAMILY, IMPLANT & COSMETIC DENTISTRY

**SANFORD N. SCHWARTZ,
D.D.S., P.A.**

813-684-7888

Email:
doctor@implantandcosmeticdentistry.com

Web: www.drsandyschwartz.com

Our Philosophy:

*To provide the very best
dental care available
while treating all
patients as members of
our own family.*

Services Include:

Veneers, Lumineers
Zoom! Whitening
Implant Surgery &
Restoration
Crowns, Bridges &
Dentures
Root Canal Therapy
Preventive Care &
Maintenance
Invisalign Wireless Braces

*Oral & IV Sedation
Nitrous Oxide (gas)
Stereo Headphones
& Movies*

*Special Consideration for
Apprehensive Patients*

LAGO
Systems
NETWORK SOLUTIONS

We Make IT Happen.

Fast. Efficient. Secure.

Richard Oldman

www.lagosys.com • 813.600.5725

Thank You.

Now when you shop at smile.amazon.com, your purchases will support **Congregation Beth Shalom Of Brandon Inc.**

[Change your charity](#)



Next, make it easy to return to smile.amazon.com.

Install the AmazonSmile shortcut in your browser.

[Install now for Internet Explorer](#)

Share your support: [f](#) [t](#)

[Dismiss](#)



Congregation Beth Shalom is now participating in Amazon Smile — it's an easy way for CBS members, family and friends to support the temple. Simply use the following link: <http://smile.amazon.com/ch/59-3026396> and shop, shop, shop!

Brandon Foot Care Center

Larry A Kaler, DPM
Foot and Ankle Specialist

BrandonFoot.com

Lumsden Executive Park

669-A W Lumsden Rd
Brandon, FL 33511

Phone: (813) 654-3354
Fax: (813) 653-9177



February 2016

Calendar is subject to change.
Please check with the Admin. Office if
you are planning an event or meet-
ing. Grey squares indicate office
closure. () indicate Tentative.

Congregation Beth Shalom
of Brandon

Sun	Mon	Tue	Wed	Thu	Fri	Sat
	1	2 6:15P Life. Learn. Comm. 7:30P Board Mtg.	3 6:15P Hebrew School 6:15P AAD Committee 6:30P Confirmation Class	4 Tu B'Shevat	5 Hills, Co. NO School Fair Day 7:45 P Shabbat Service	6 7:30P Movie Night— Lifelong Learning
7 Superbowl Sunday 9:30A RS 12:30P Purim Rehearsal	8 7:30P ShabAlive Band	9	10 6:15P Hebrew School 6:15P AAD Committee	11	12 Kibbitzer Deadline 7:45 P Shabbat Service	13
14 9:30A RS 9:45A RSPA 12:30P Purim Rehearsal	15 7:30P ShabAlive Band	16	17 6:15P Hebrew School 6:15P AAD Committee 6:30P Confirmation Class	18 Holocaust Museum To Life Fundraiser	19 7:00 P Shabbat Svc Simcha	20 6:00P BESTY Event
21 JCC SuperSunday 9:30A RS 9:45A Torah Tots 12:30P Purim Rehearsal 4:00 BESTY Board	22 7:30P ShabAlive Band	23 7:30P Exec. Comm. Mtg.	24 6:15P Hebrew School 6:15P AAD Committee 7:30P Ritual Comm.	25 7:30P ShabAlive Band	26 7:45 P Shabbat Service / Shabbat Alive	27 <div>ART AFTER DARK</div> <div>7:00PM</div>
28 9:30A RS 12:30P Purim Rehearsal	29 5:30P Dinner with the Tribe 7:30P Choir Rehearsal					



706 Bryan Road - Brandon FL 33511

NONPROFIT ORG
U.S. POSTAGE PAID
PERMIT NO 6717
TAMPA FL

Address Service Requested

Inside Scoop

<i>Mazels & Kudos</i>	<i>4</i>
<i>Kolot Shalom</i>	<i>4</i>
<i>Art After Dark</i>	<i>5</i>
<i>Page Turners</i>	<i>6</i>
<i>Religious School</i>	<i>7</i>
<i>Lifelong Learning</i>	<i>8</i>
<i>Calendar</i>	<i>15</i>



JOIN OUR WEIGHT LOSS PROGRAM

Monthly group rate day \$100 (reg. \$185) start-up fee
Call us for this month date!

Laser Hair Removal • Laser Vein Removal
Age Spot Removal • Laser Skin Rejuvenation
Botox • Chemical Peels
Skin Care Products • Microdermabrasion

Peter A. Jacobson, M.D.
500 Vonderburg Drive, Ste 302E
Brandon FL 33511
(813) 654-8193 or (813) 681-5702
arcofbrandon.com
e-mail - arcofbrandon@verizon.net

We are owned and operated by physicians
who care about you.

There is no better investment than yourself!
Look younger, Feel younger, and Live younger!